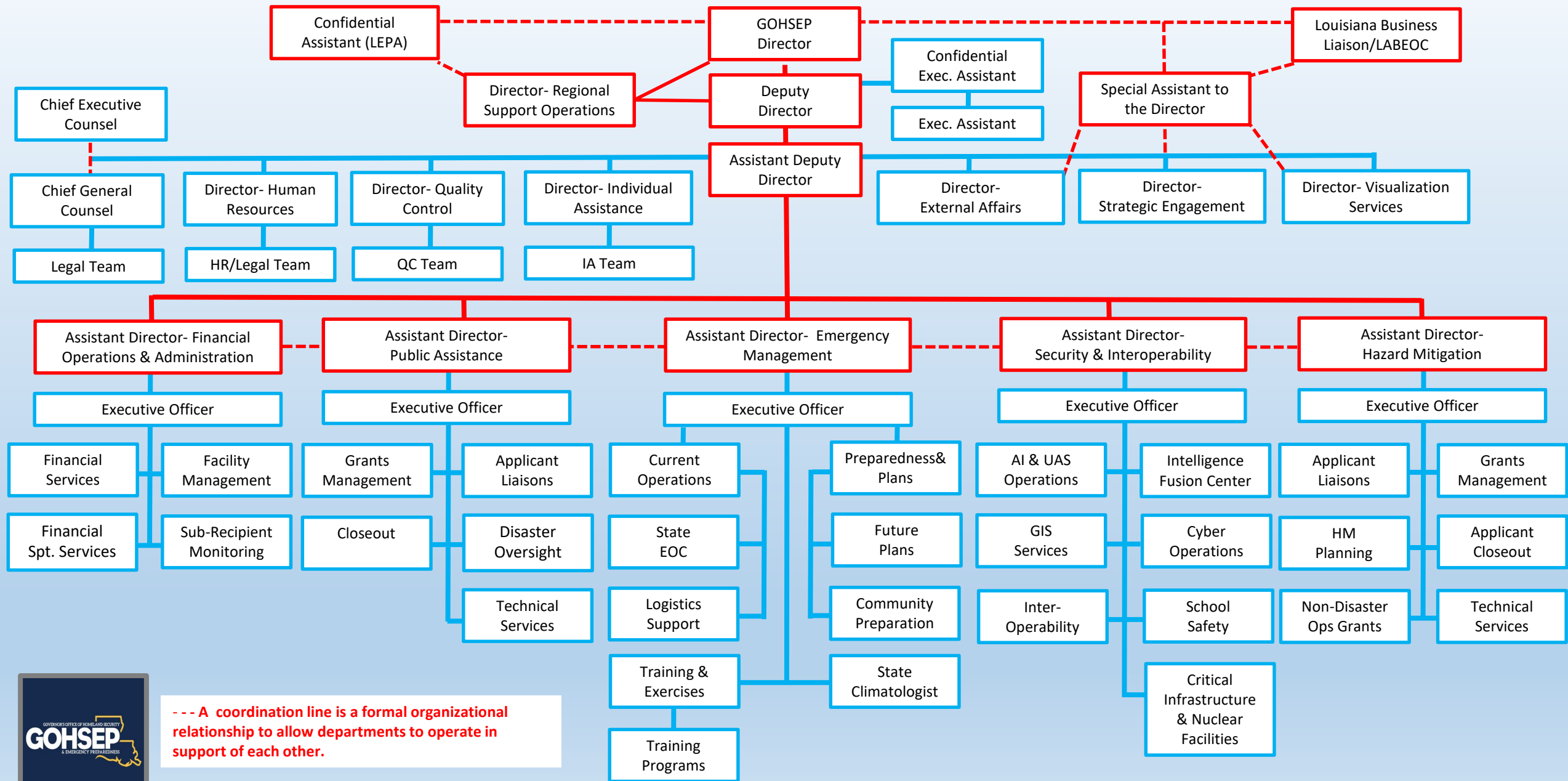
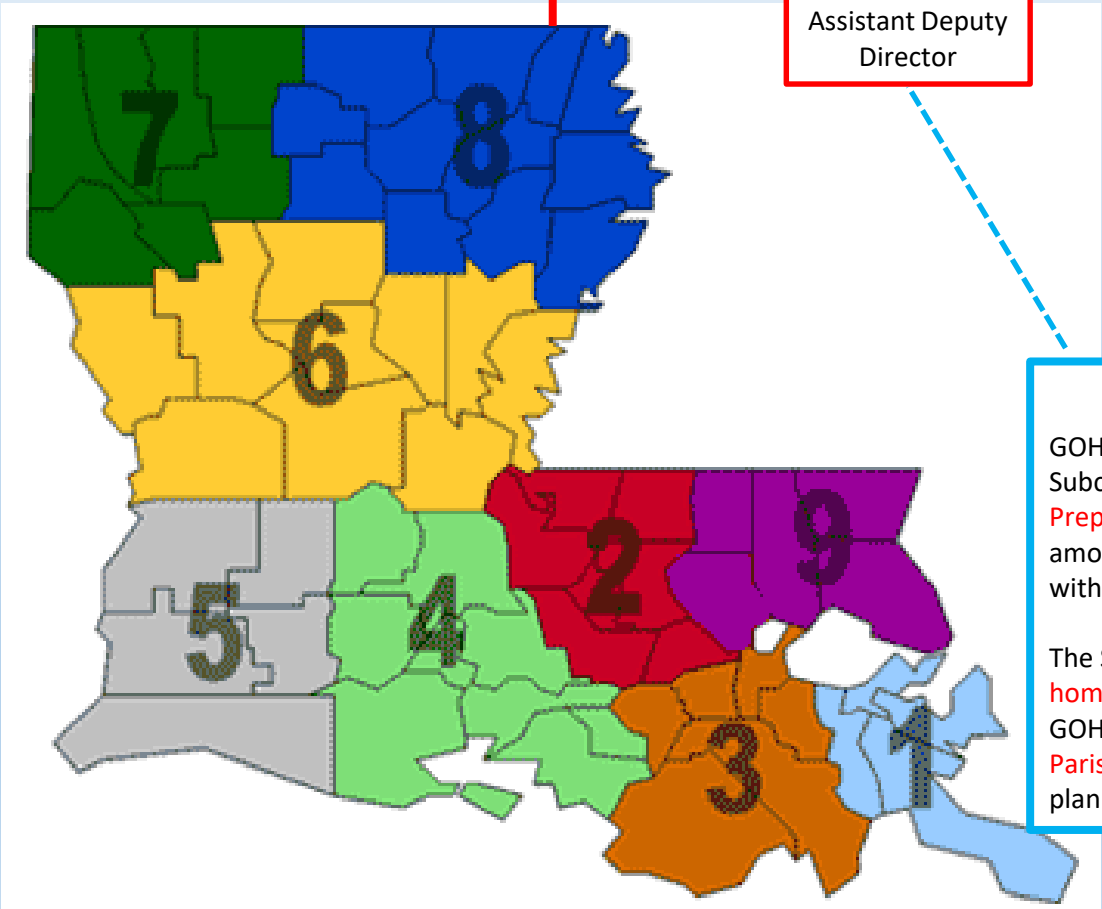
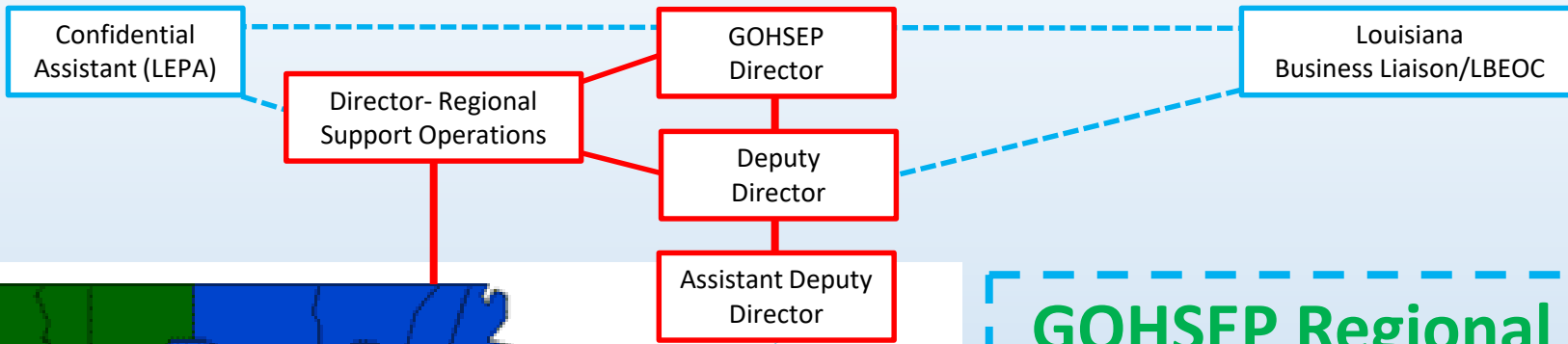


GOHSEP Org Chart EOC Activation Level IV, Normal Operations



--- A coordination line is a formal organizational relationship to allow departments to operate in support of each other.

GOHSEP Org Chart EOC Activation Level IV, Normal Operations



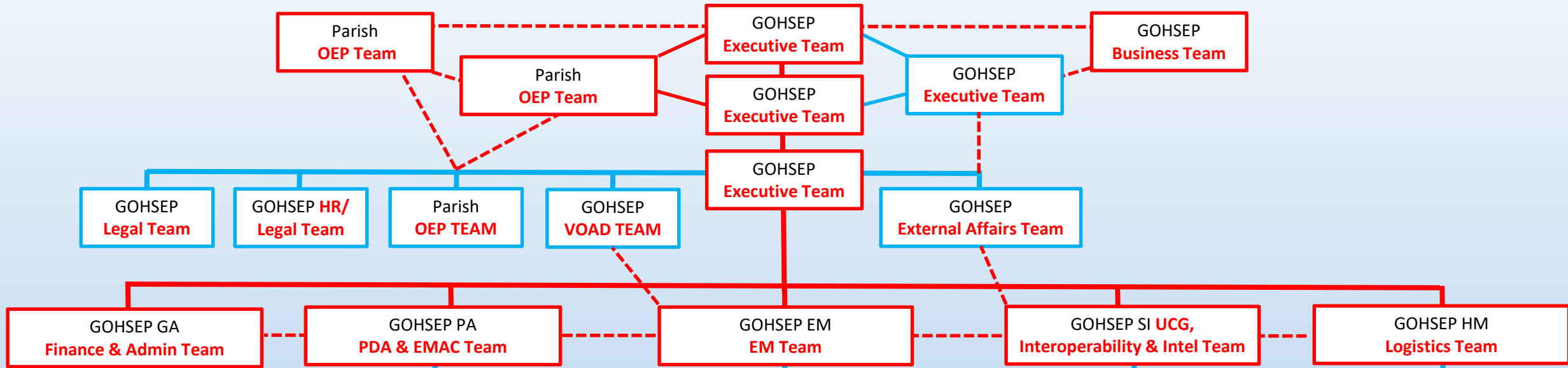
GOHSEP Regional Structure
 Director- Regional Support Operations
 Three Area Directors
 Nine Regional Coordinators

Regional OHSEP Directors Sub-Committee
 GOHSEP has designated nine (9) emergency management Regions. The Regional Directors Subcommittee is composed of one (1) Parish Office of Homeland Security and Emergency Preparedness (OHSEP) Director from each Region. Representatives are selected from among their peers and represent their Region. Terms are determined by OHSEP Directors within the Region and terms vary.

The Subcommittee provides a forum where the different Regions collectively discuss homeland security and emergency management issues with each other and the Director of GOHSEP. Members provide a Regional perspective as they offer advice and counsel to Parish or Police Jury Presidents regarding strategic emergency management issues and planning



GOHSEP Org Chart EOC Activation Level III,II,I



Emergency Action Levels

Level I: In progress - response activities required

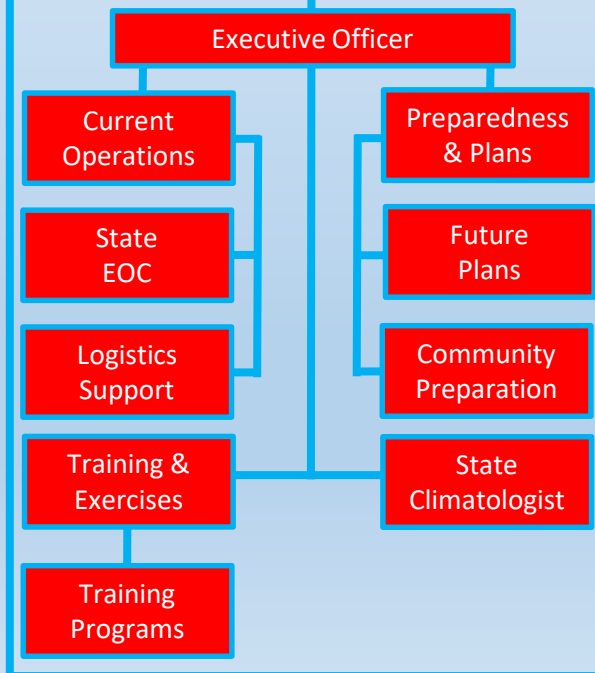
Incident requiring full augmentation of EOC with all ESFs, supporting organizations & FEMA

Level II: Event in progress - major impact

Incident requiring full augmentation of EOC with all ESFs, supporting organizations & FEMA as needed

Level III: Potential or actual threat

Incident requiring activation of CAT with potential augmentation from selected ESFs



Most Likely
Most Dangerous

Respond

