

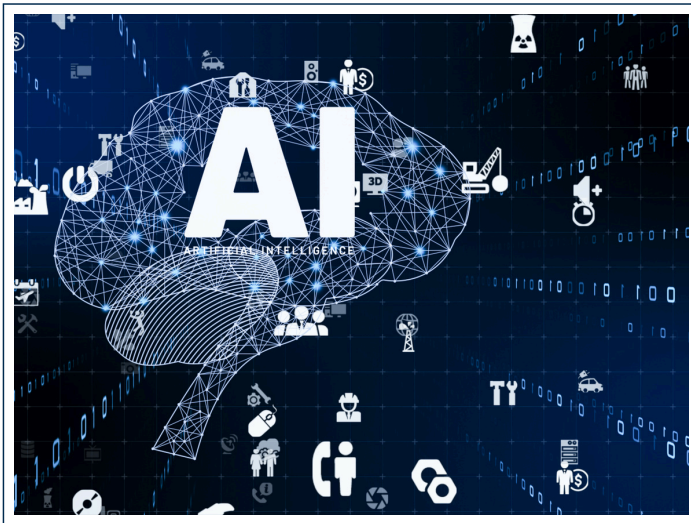
Leveraging AI for Emergency Management

This course provides participants with a foundational yet practical understanding of artificial intelligence, equipping them to explore its capabilities and applications within modern systems. Through interactive discussions and real-world case studies, attendees will gain valuable insights into key AI concepts and learn how to strategically integrate AI into operational environments.

Core topics include:

- Fundamentals of Artificial Intelligence
- Overview of Common AI Models and Their Functions
- Real-World Applications in Administration, Situational Awareness, and Communication
- Ethical Implications and Implementation Challenges
- Strategies for Integrating AI into Existing Infrastructure

By the end of the course, participants will have gained a comprehensive understanding of Artificial Intelligence and its applications in maximizing emergency management activities.



Abdalla Hall Auditorium
University of Louisiana at Lafayette
635 Cajundome Blvd.
Lafayette, LA 70506



August 19, 2025
12:00 pm - 4:00 pm
August 20, 2025
8:00 am - 12:00 pm

Register Now!

Click the link below or scan the code.

<https://stems.gohsep.la.gov/courses/3375/offerings/8640>



Traveling over 35 miles?

Rooms and an evening meal may be provided upon request for attendees who live more than 35 miles from Abdalla Hall.



Deadline for Lodging & Meal Reservation:
August 12, 2025

Hotel Accommodations

DoubleTree by Hilton Lafayette
1521 W. Pinhook Rd, Lafayette, LA 70503

- Confirmation emails will be sent by August 15 or before.
- When you arrive, the front desk will have your name and room number if you requested lodging.
- Check-in will be after the first day of class.

Hosted by

