

---

# LWIN Site Proposals

---

13 April 2010

---



## Contents

Major Gap Reference .....	4
Minor Gap Reference .....	5
Review of Priority Gaps .....	6
Gap 1: Proposed Solution .....	7
Gap 5: Proposed Solution .....	9
Gap 2: Proposed Solution .....	11
Gap 6: Proposed Solution .....	13
Gap m15: Proposed Solution .....	15
Gap 10: Proposed Solution .....	17
Gap 15: Proposed Solutions .....	19
Gap m10: Proposed Solution .....	22
Gap 16: Proposed Solution .....	24
Gap 17: Proposed Solution .....	26
Gap m13: Proposed Solution .....	28
Gap 8: Proposed Solution .....	30
Gap 11a: Proposed Solutions .....	32
Gap 5b: Proposed Solutions .....	35
Gap 9b: Proposed Solution .....	38

# Summary of 15 Site Addition Impact

---

The addition of 15 additional 700 MHz sites in the state of Louisiana will result in the following impact:

<b>Additional Population Covered</b>	<b>90,438</b>
<b>Additional Square Miles of Land Covered</b>	<b>13,008</b>
<b>Additional Square Miles of Urban Area Covered</b>	<b>90.93</b>
<b>Additional Miles of Major Roads Covered</b>	<b>1,200</b>

For any additional questions, contact:

*Brant Mitchell*

*Deputy Director*

*Management, Finance and Interoperability*

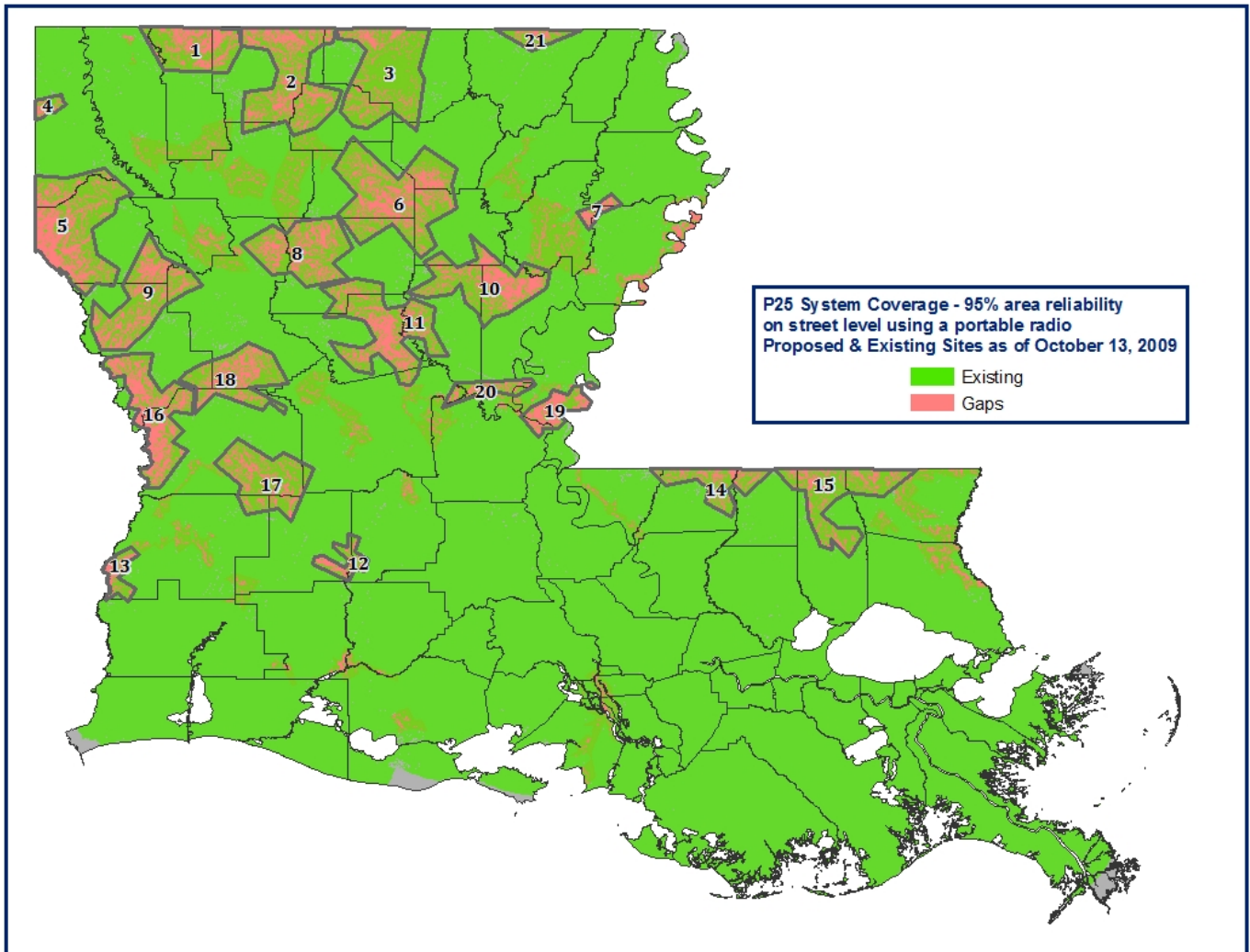
*Governor's Office of Homeland Security and Emergency Preparedness*

*(225) 925-7332 (Office)*

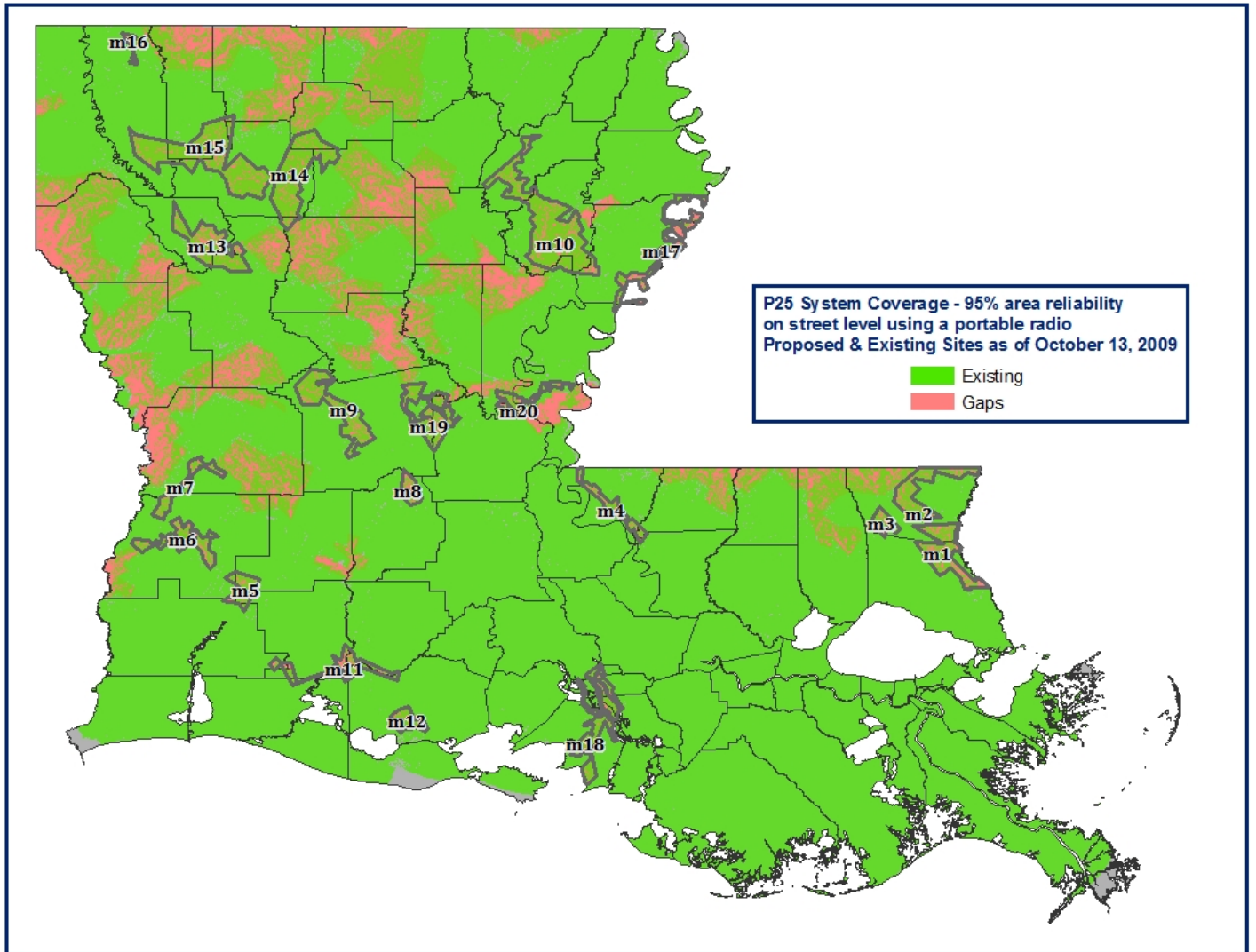
*(225) 925-7501 (Fax)*

*Brant.Mitchell@la.gov*

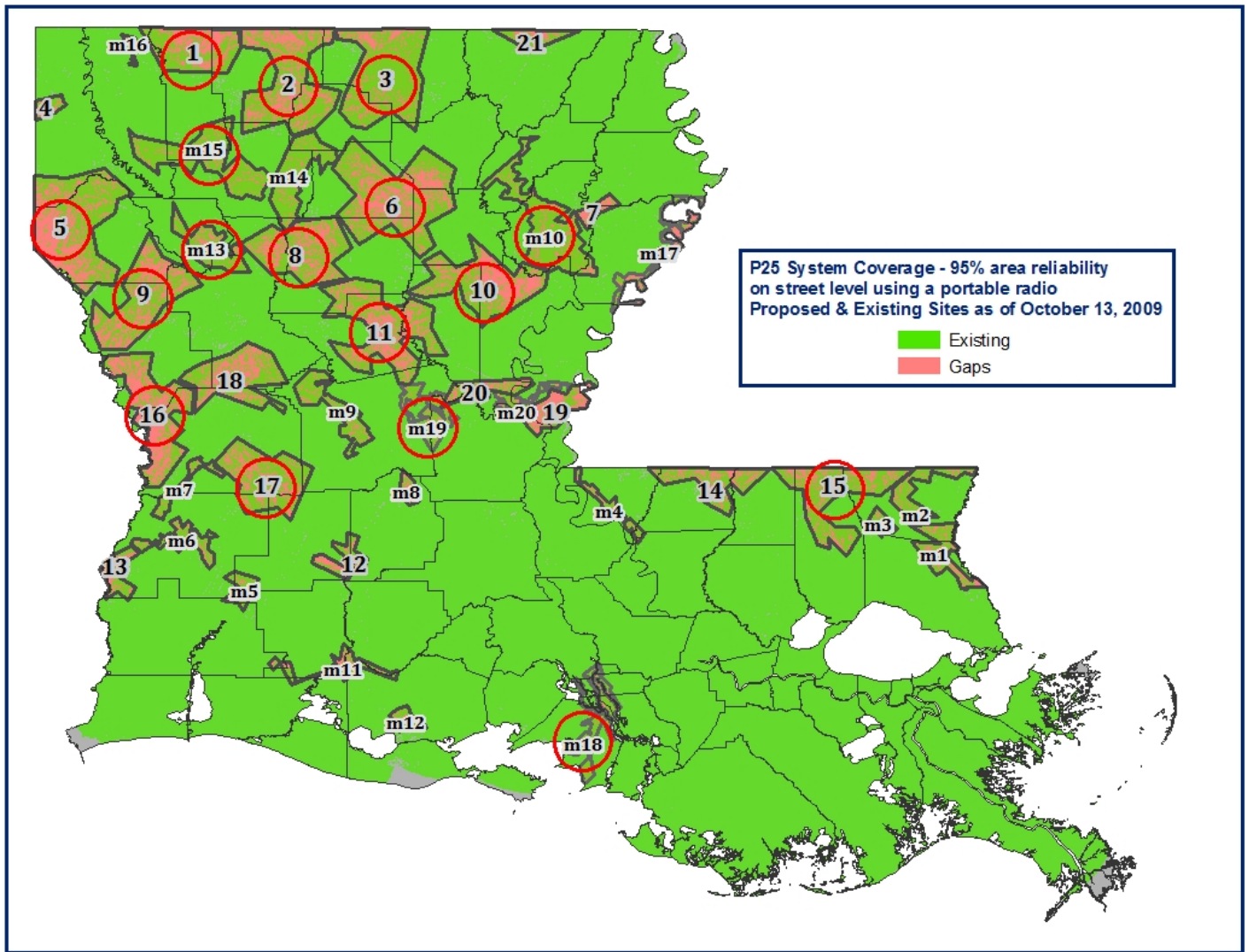
# Major Gap Reference



# Minor Gap Reference



# Review of Priority Gaps

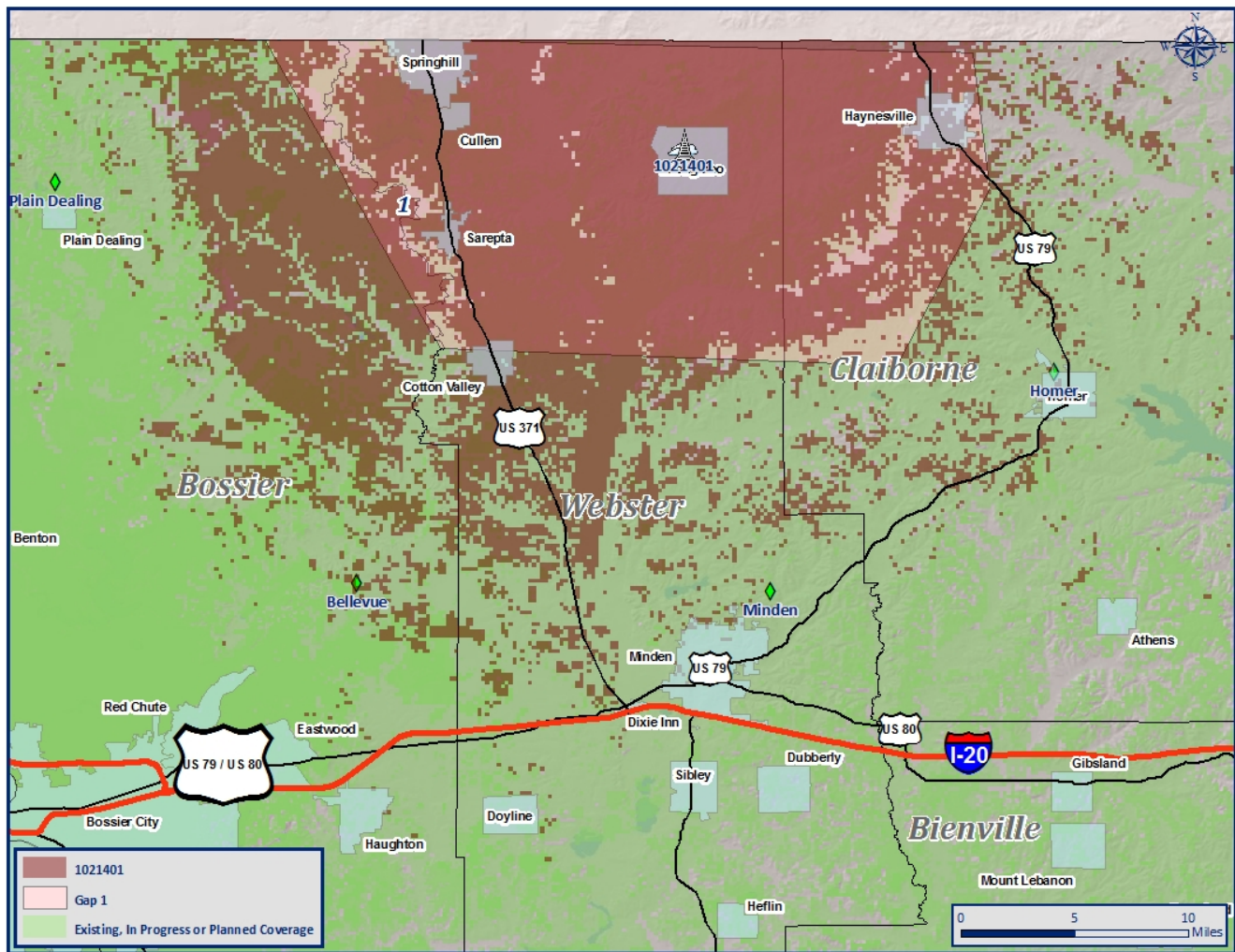


Gap Priority	Gap
1	1
2	5
3	2
4	3
5	6
6	m15
7	15
8	m10
9	9
10	16
11	17
12	11
13	10
14	m13
15	8

# Gap 1: Proposed Solution

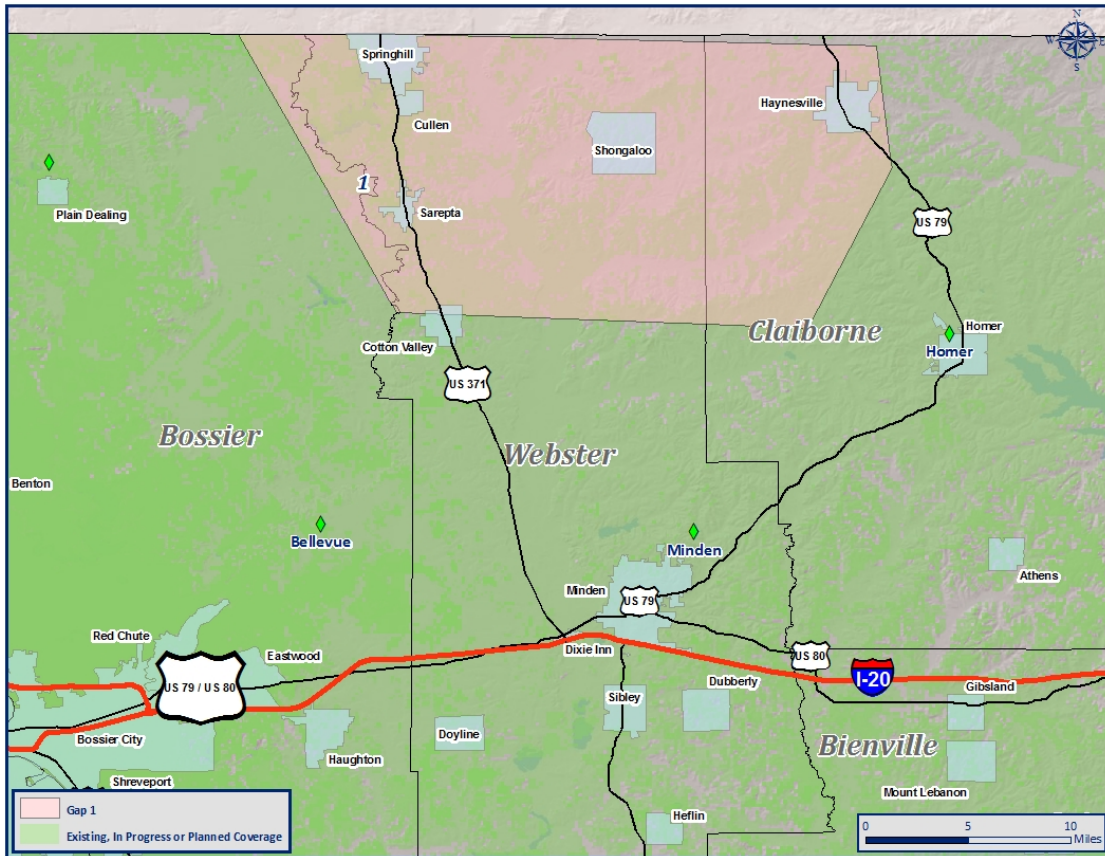
ASR: 1021401

Location: 32.948992, -93.300977

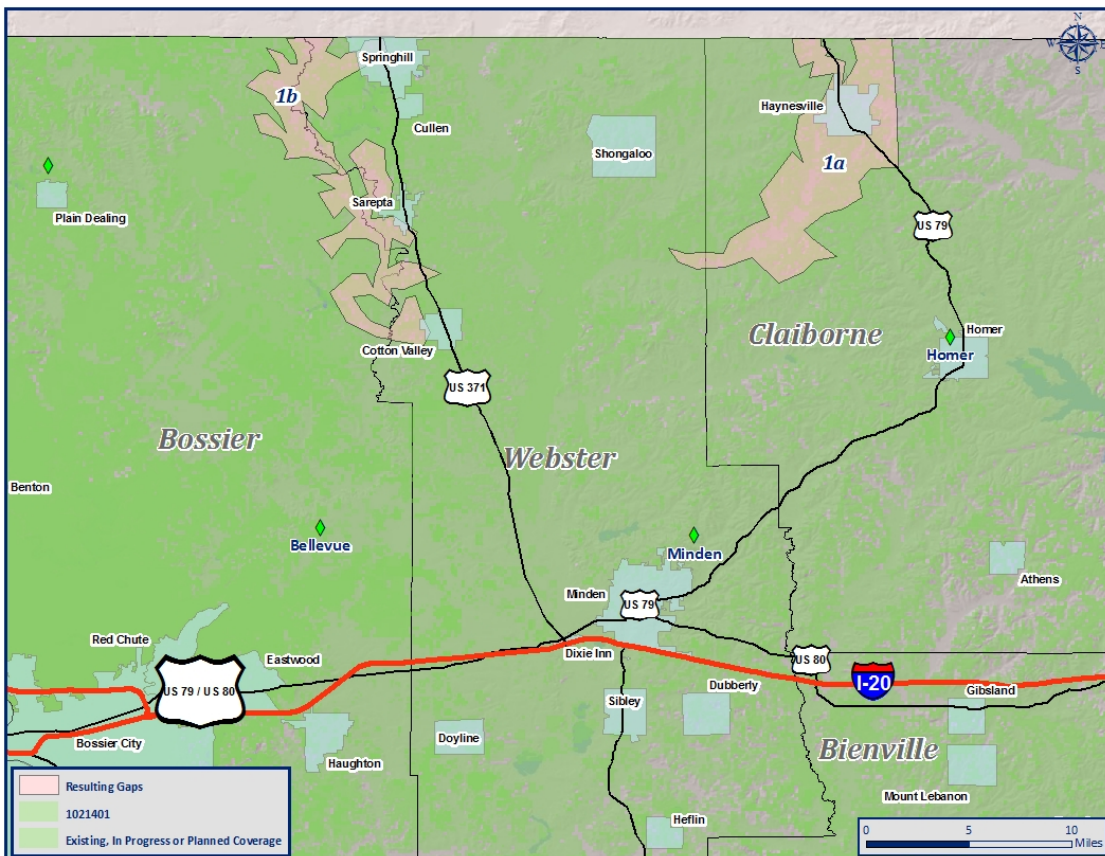


	Existing in Gap 1	Remaining with New Coverage	Percent of Change
<b>Area (Square Miles)</b>	308	214	30.52%
<b>People</b>	16,791	4,778	71.54%
<b>Roads</b>	147	42	71.43%
<b>Urban Areas</b>	22.61	4.61	79.61%

### Previous Gap:



### Resulting Gaps:

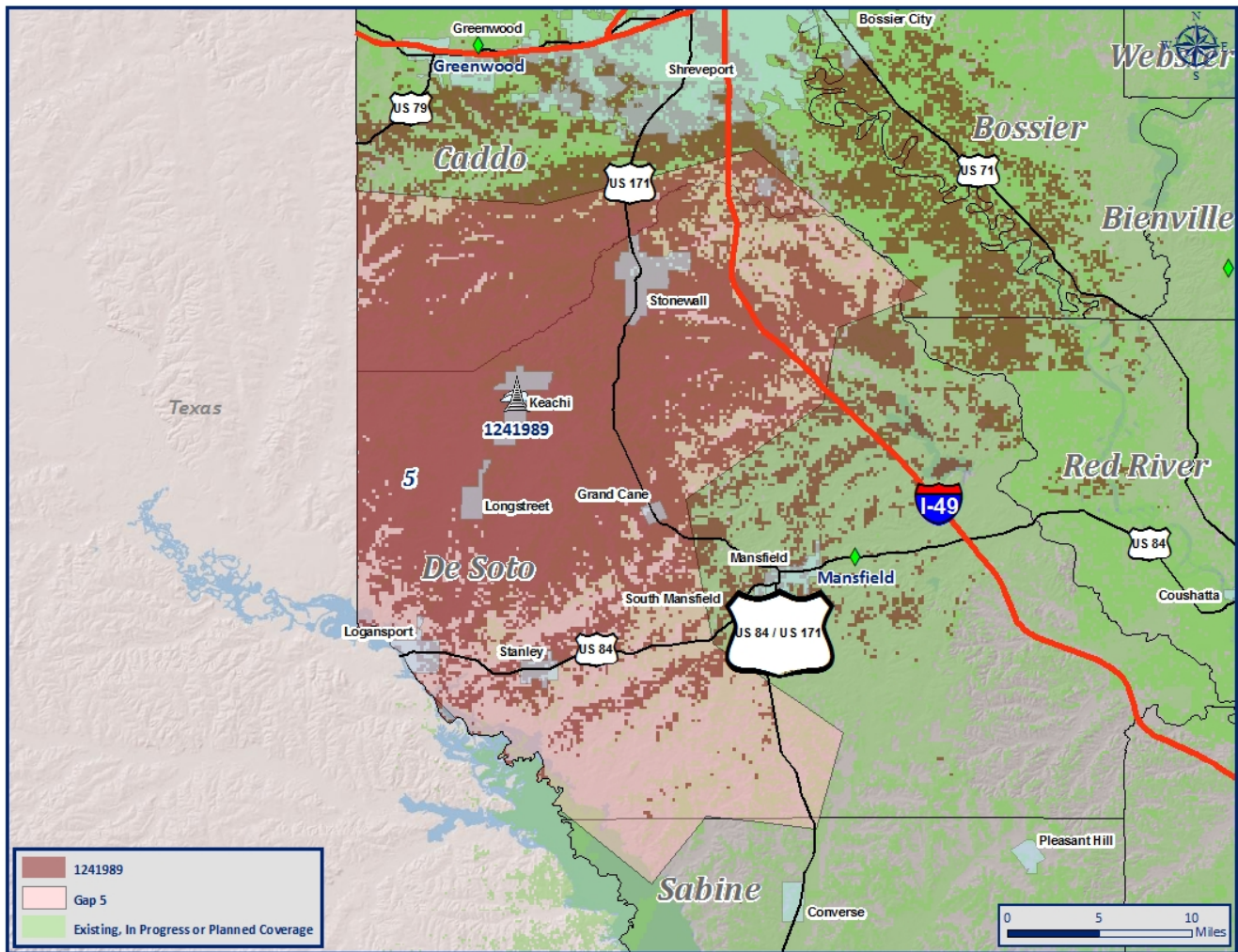




# Gap 5: Proposed Solution

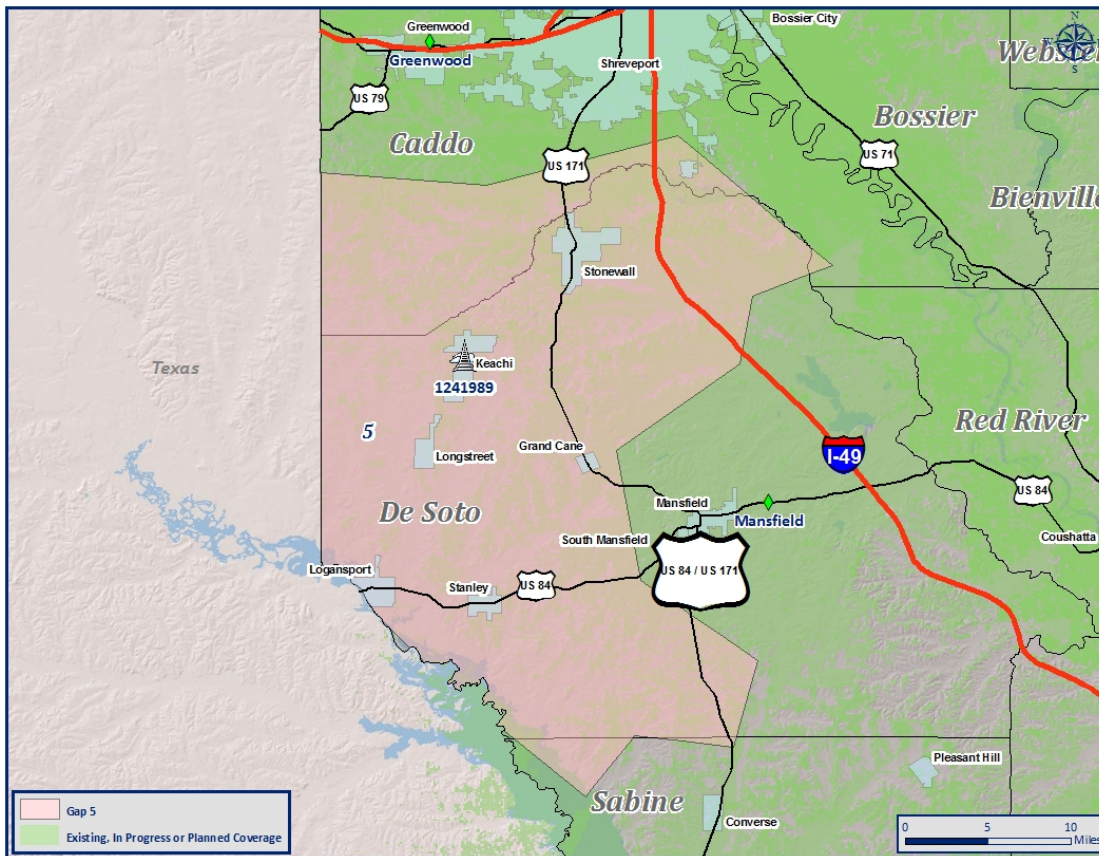
ASR: 1241989

Location: 32.177050, -93.917519

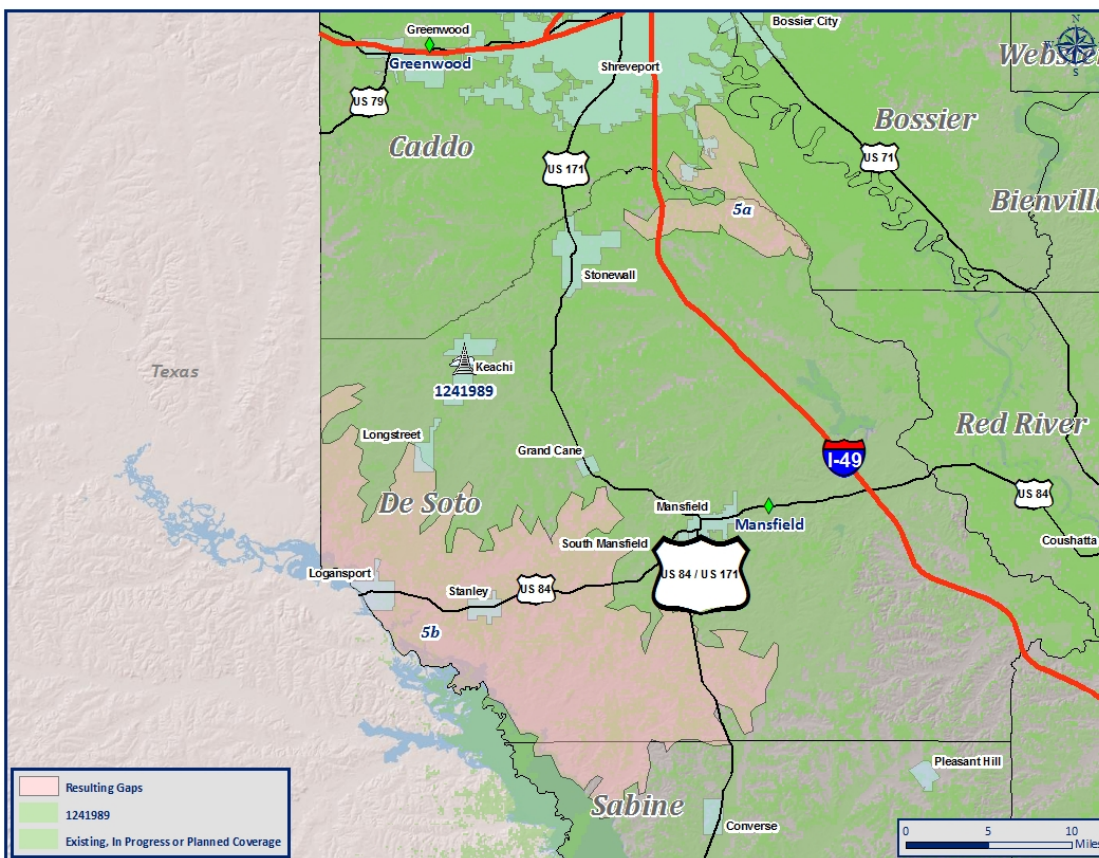


	Existing in Gap 5	Remaining with New Coverage	Percent of Change
Area (Square Miles)	652	326	50.00%
People	19,397	9,147	52.84%
Roads	187	92	50.80%
Urban Areas	22.17	6.17	72.17%

### Previous Gap:



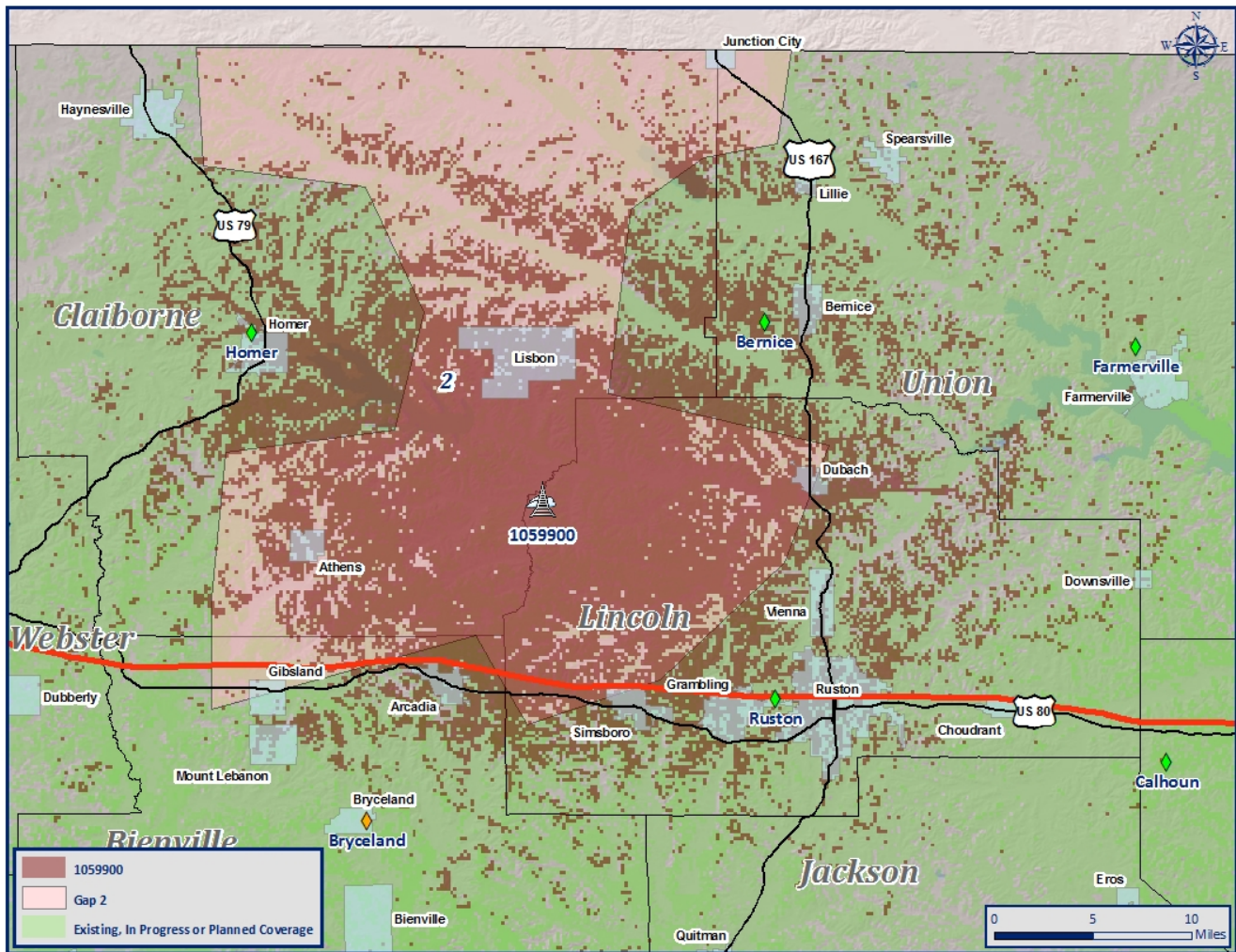
### Resulting Gaps:



# Gap 2: Proposed Solution

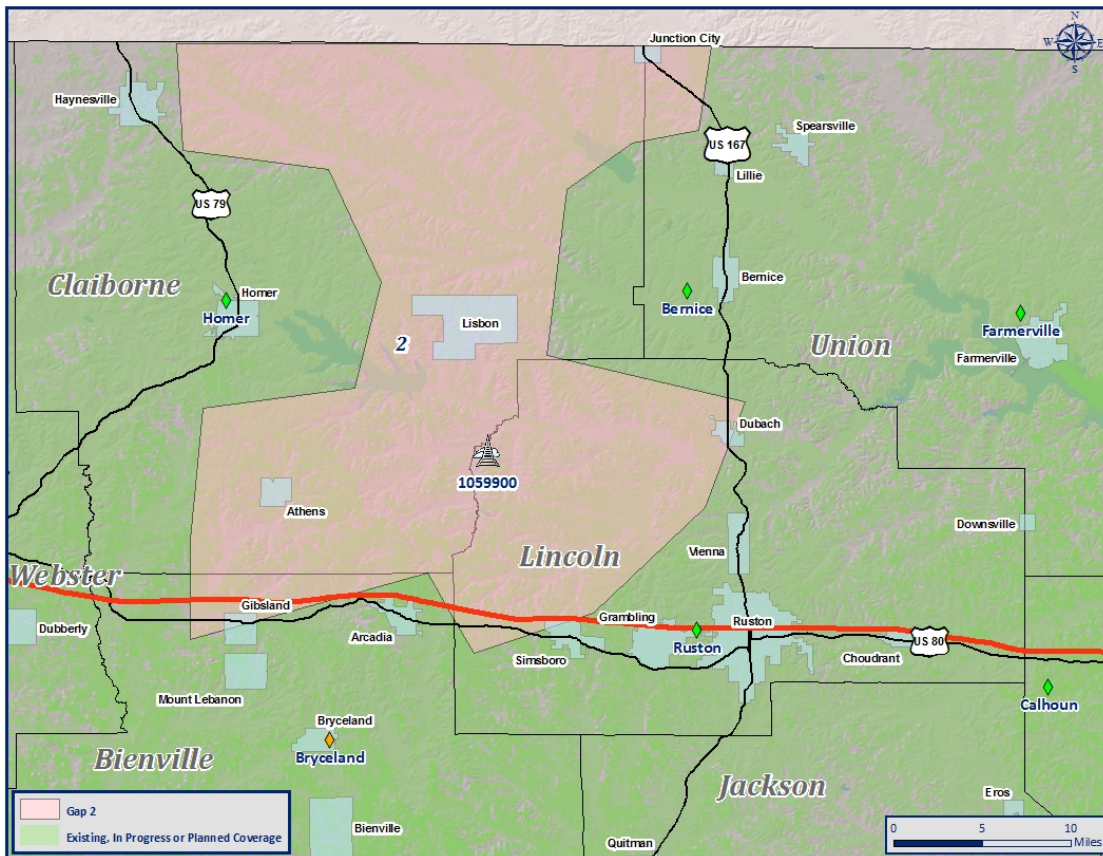
Site near ASR 1059900

Location: 32.683604, -92.853200

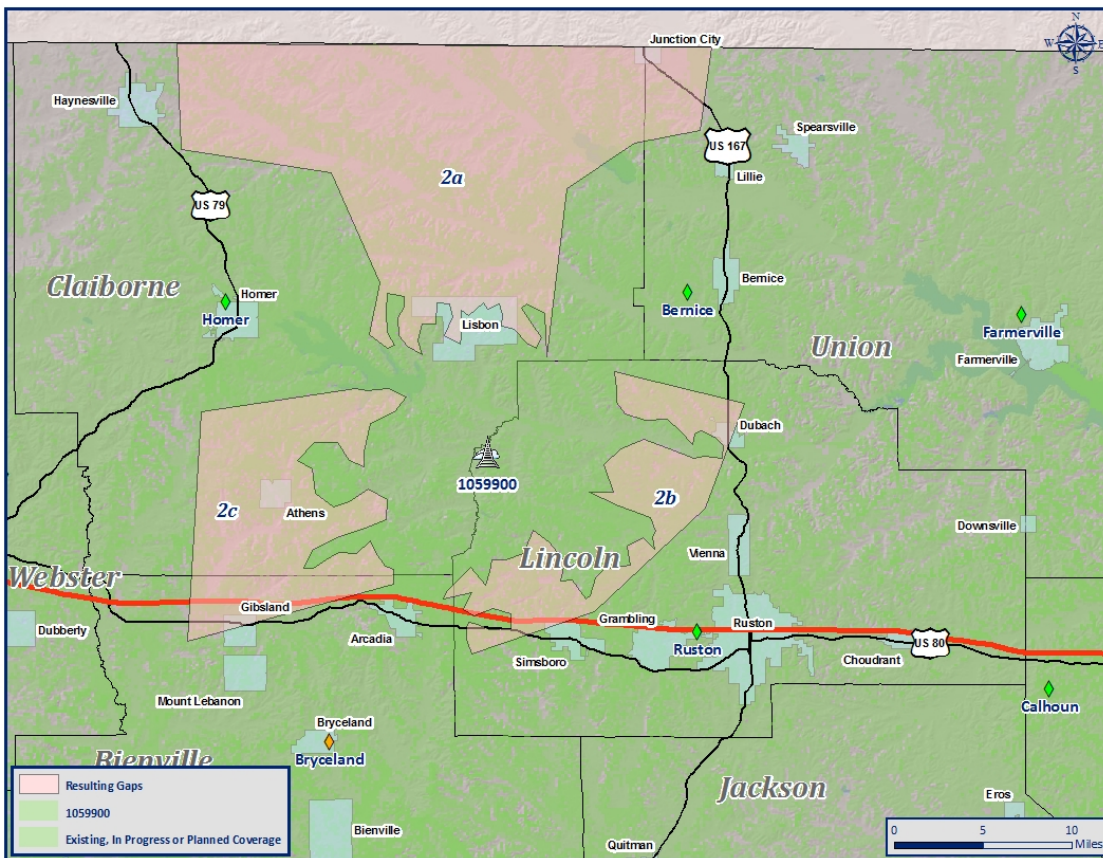


	Existing in Gap 2	Remaining with New Coverage	Percent of Change
Area (Square Miles)	539	322	40.26%
People	8,364	5,252	37.215
Roads	219	114	47.95%
Urban Areas	18.78	8.78	53.25%

### Previous Gap:



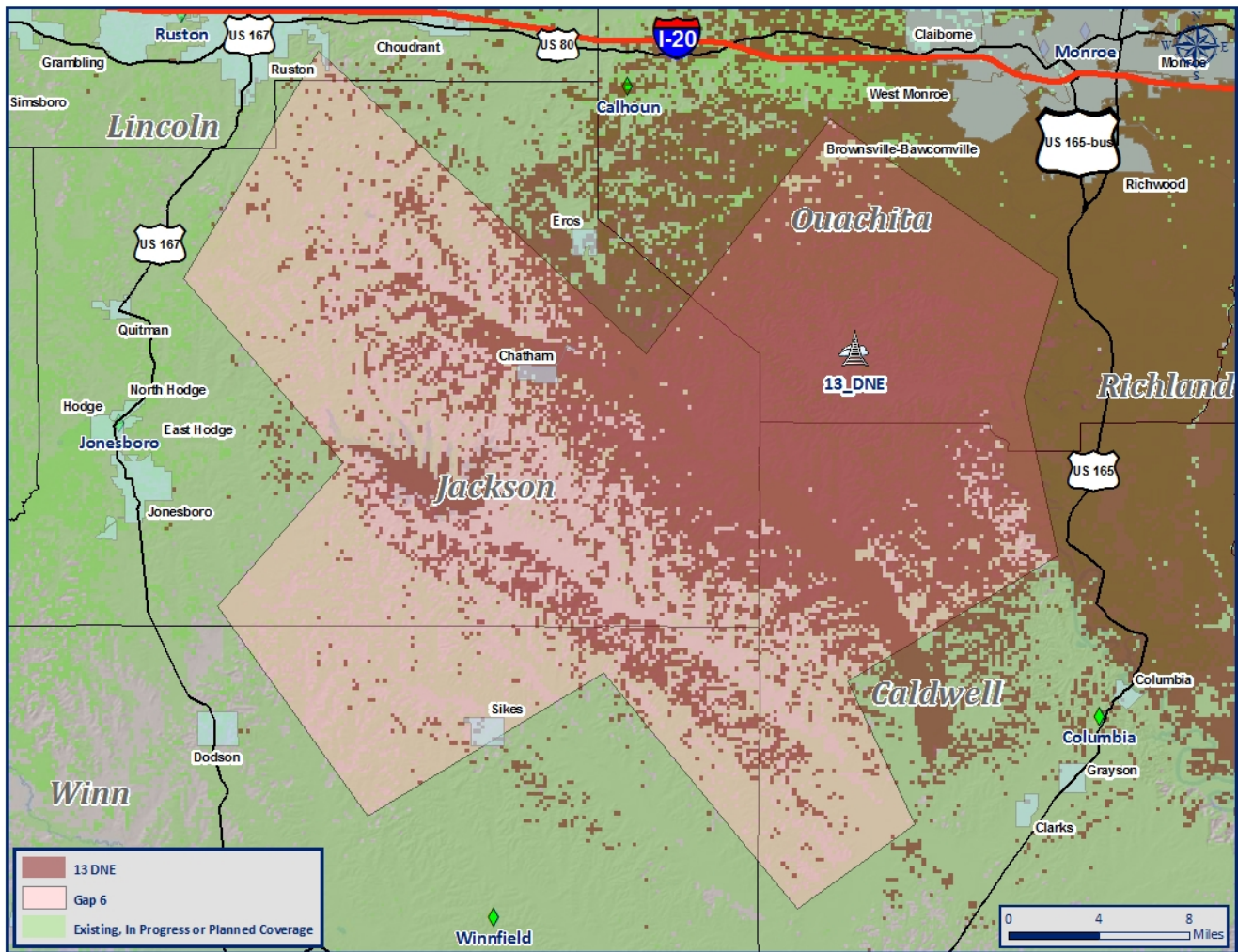
### Resulting Gaps:



# Gap 6: Proposed Solution

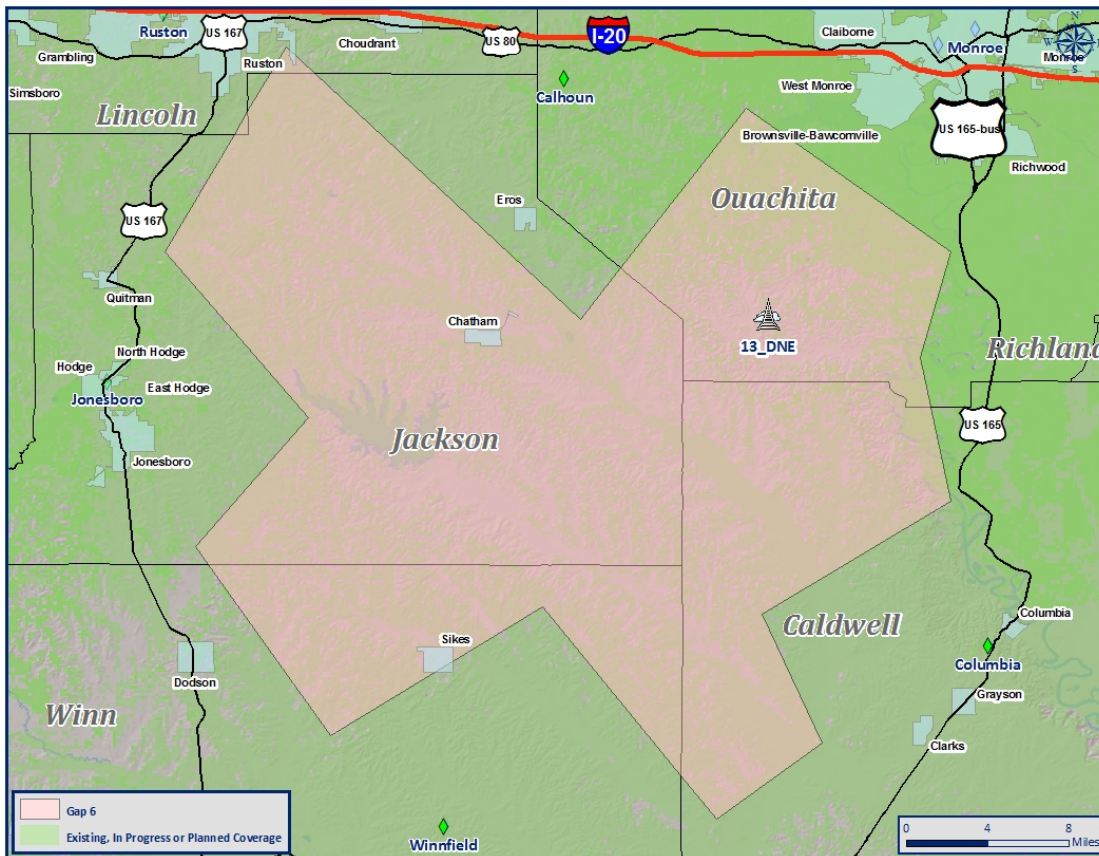
Site near 13DNE

Location: 32.327381, -92.249453

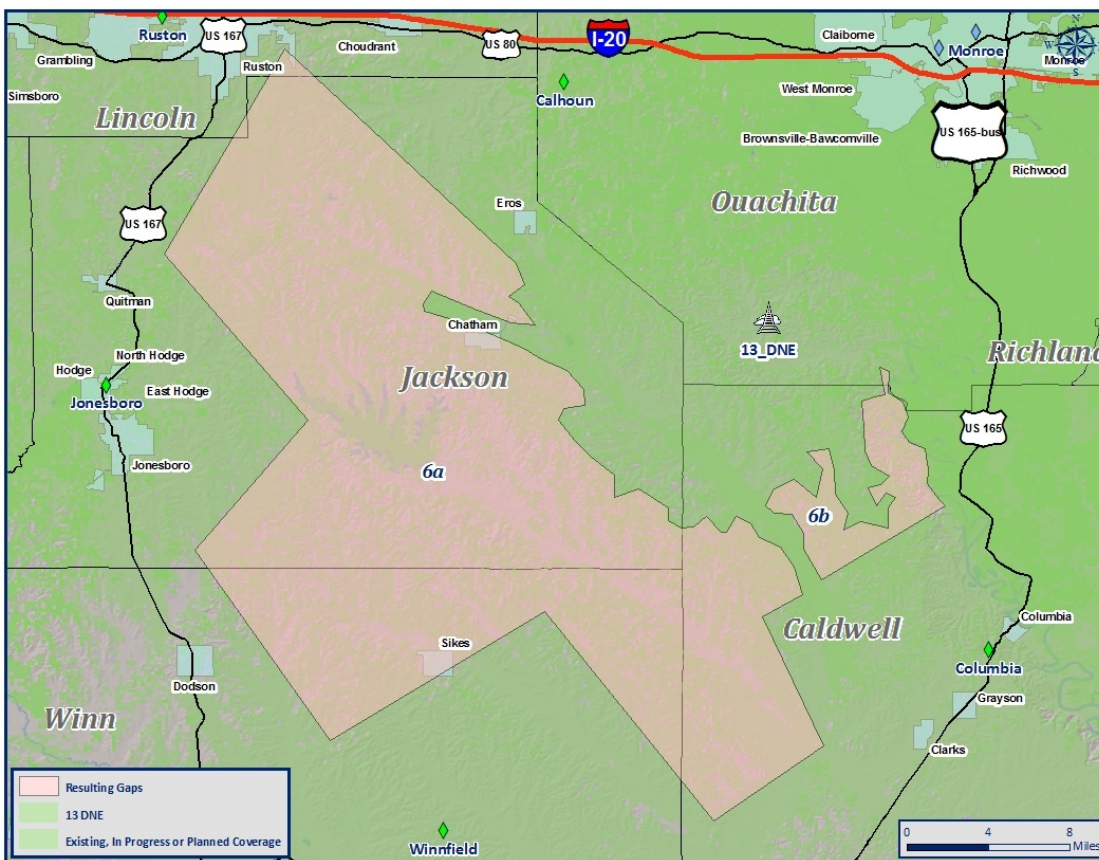


	Existing in Gap 6	Remaining with New Coverage	Percent of Change
Area (Square Miles)	707	469	33.66%
People	10,145	4,585	54.81%
Roads	190	120	36.84%
Urban Areas	2.61	1.61	38.31%

### Previous Gap:



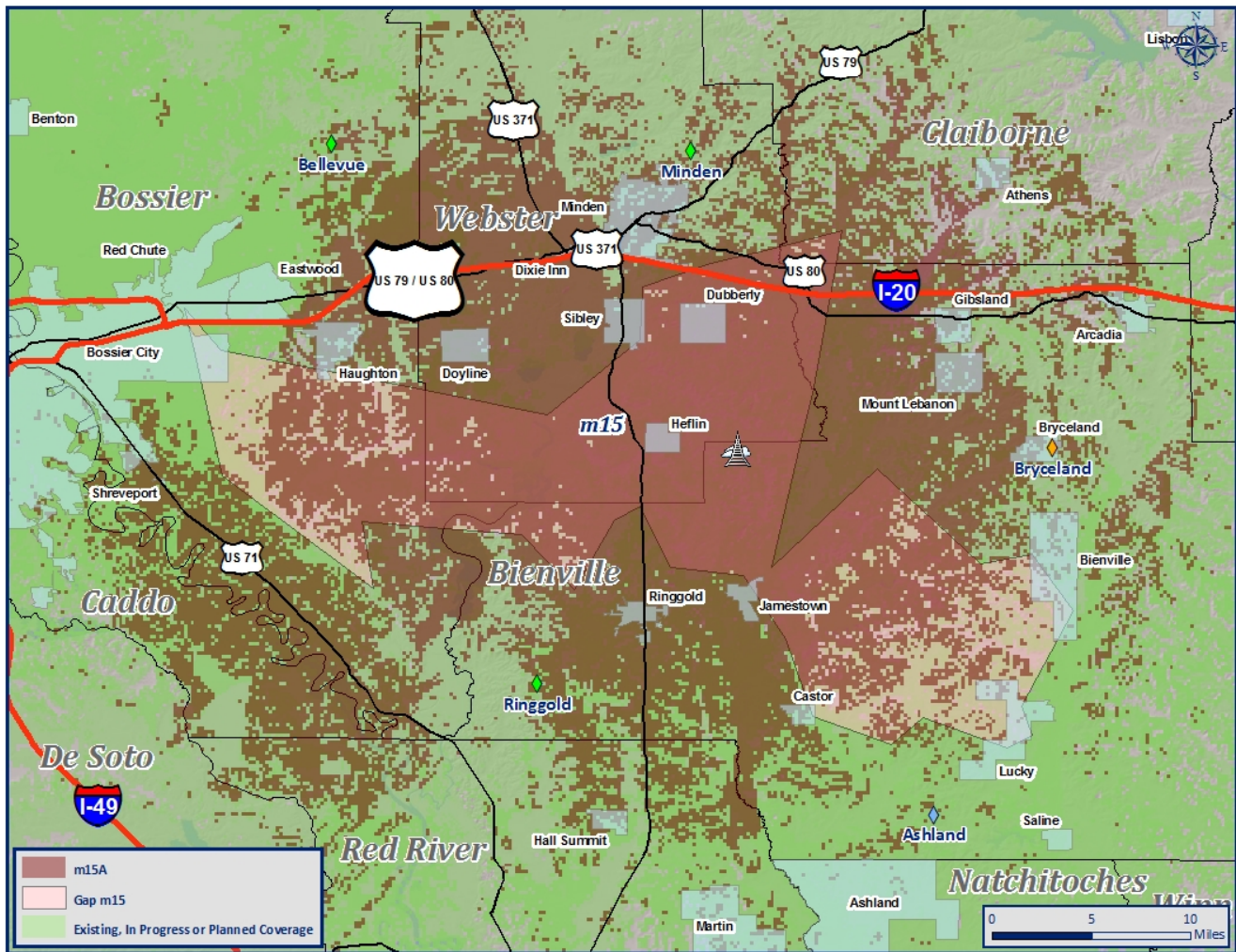
### Resulting Gaps:



# Gap m15: Proposed Solution

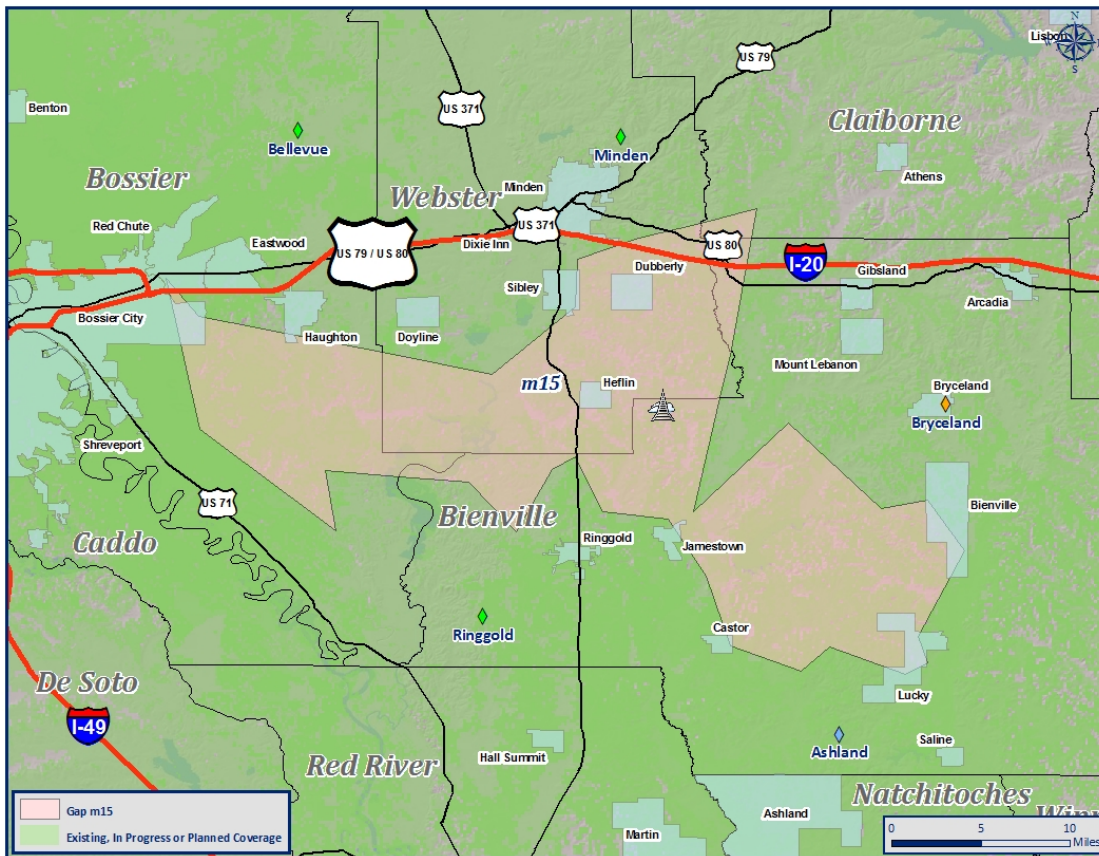
## Site near m15A

Location: 32.448891, -93.212276

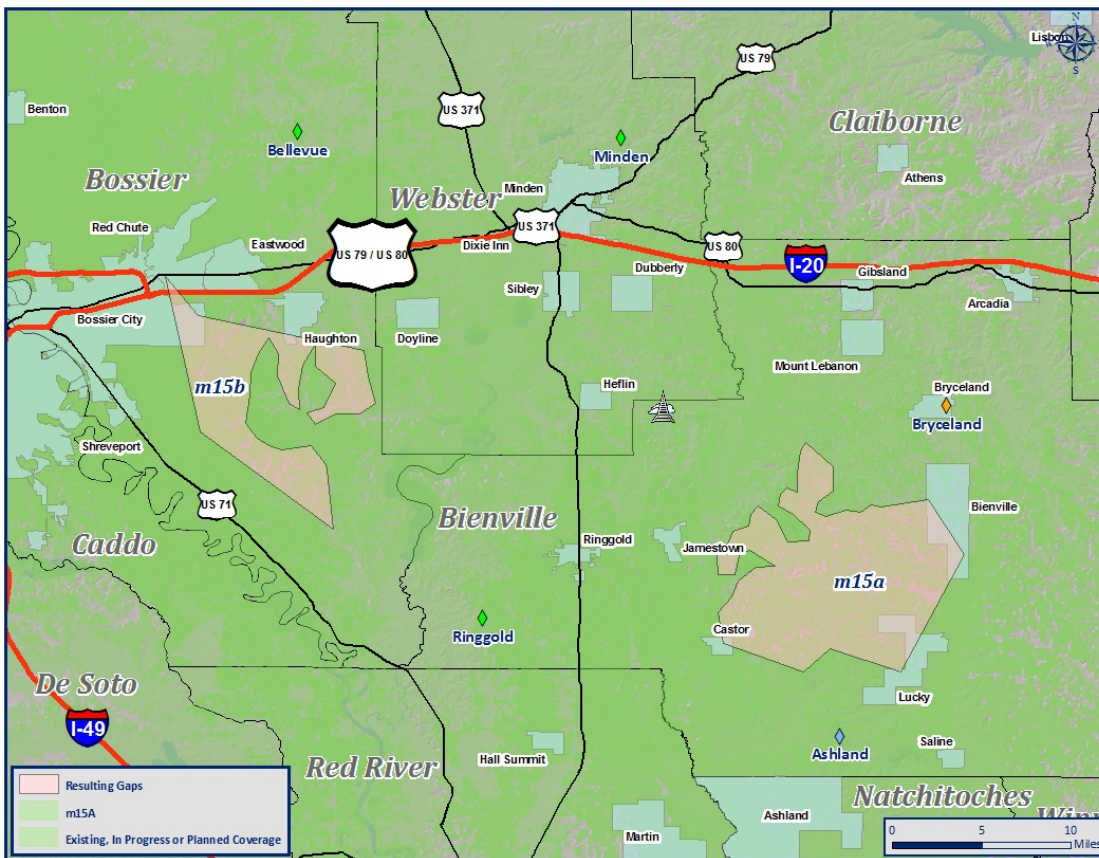


	Existing in Gap m15	Remaining with New Coverage	Percent of Change
Area (Square Miles)	356	119	66.57%
People	9,396	2,614	72.18%
Roads	120	32	73.33%
Urban Areas	16.47	9.86	40.13%

### Previous Gap:



### Resulting Gaps:

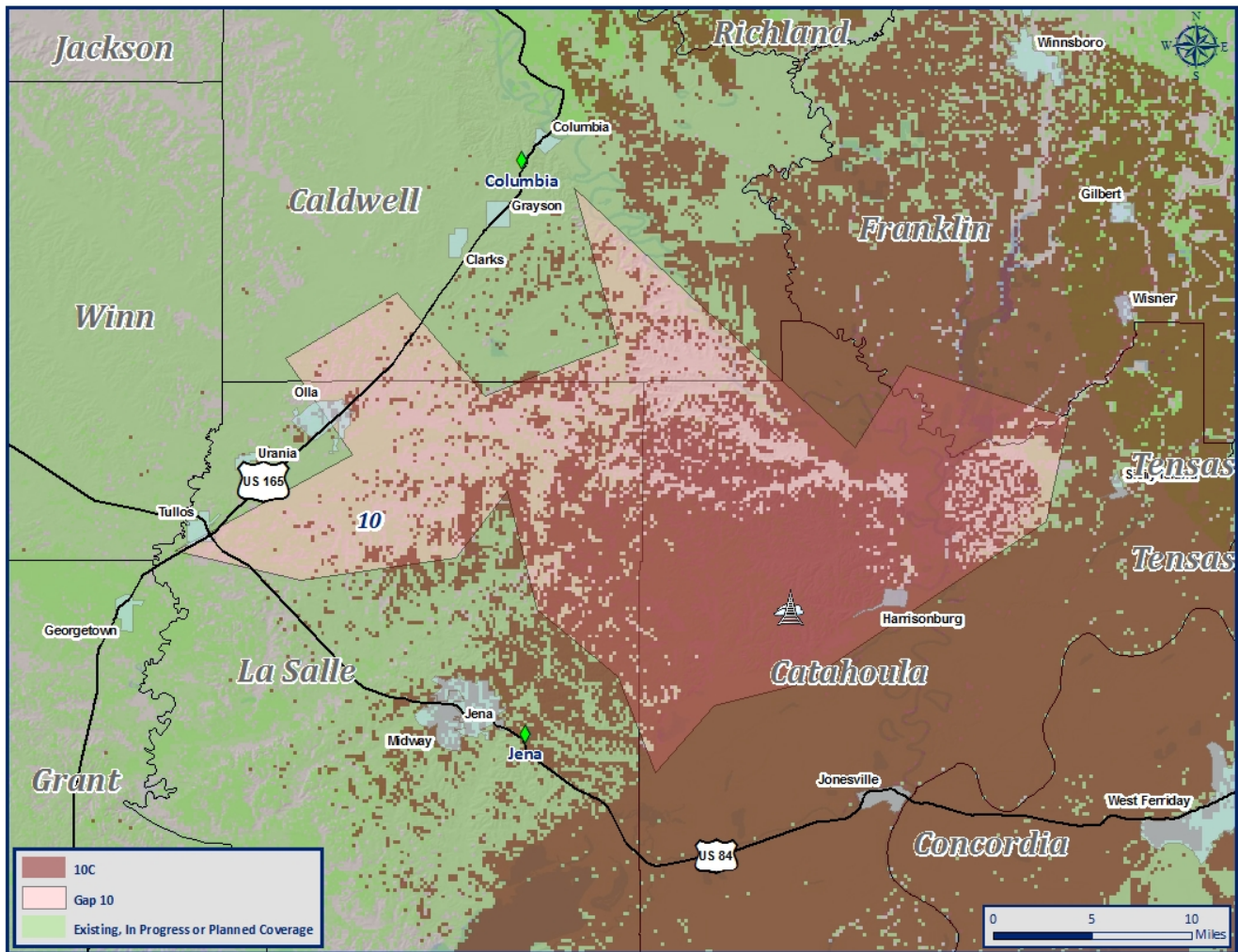




# Gap 10: Proposed Solution

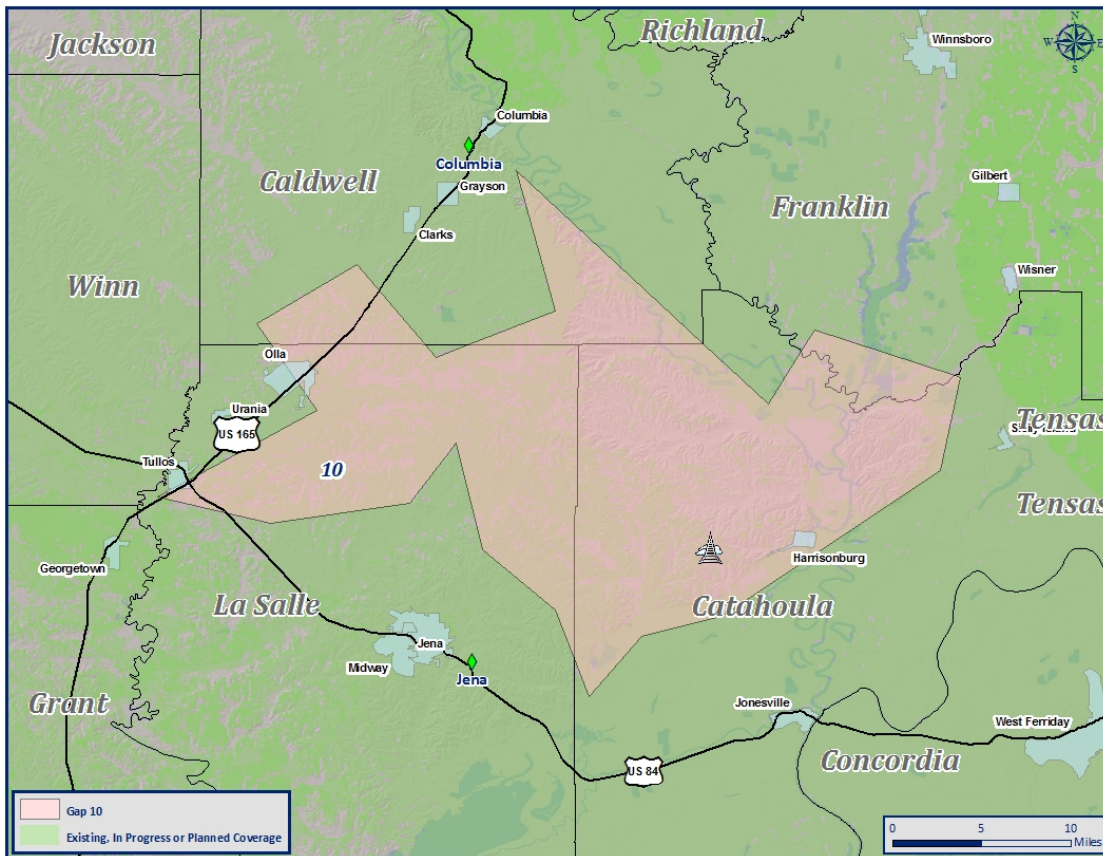
Site near 10C

Location: 31.762446, -91.89848

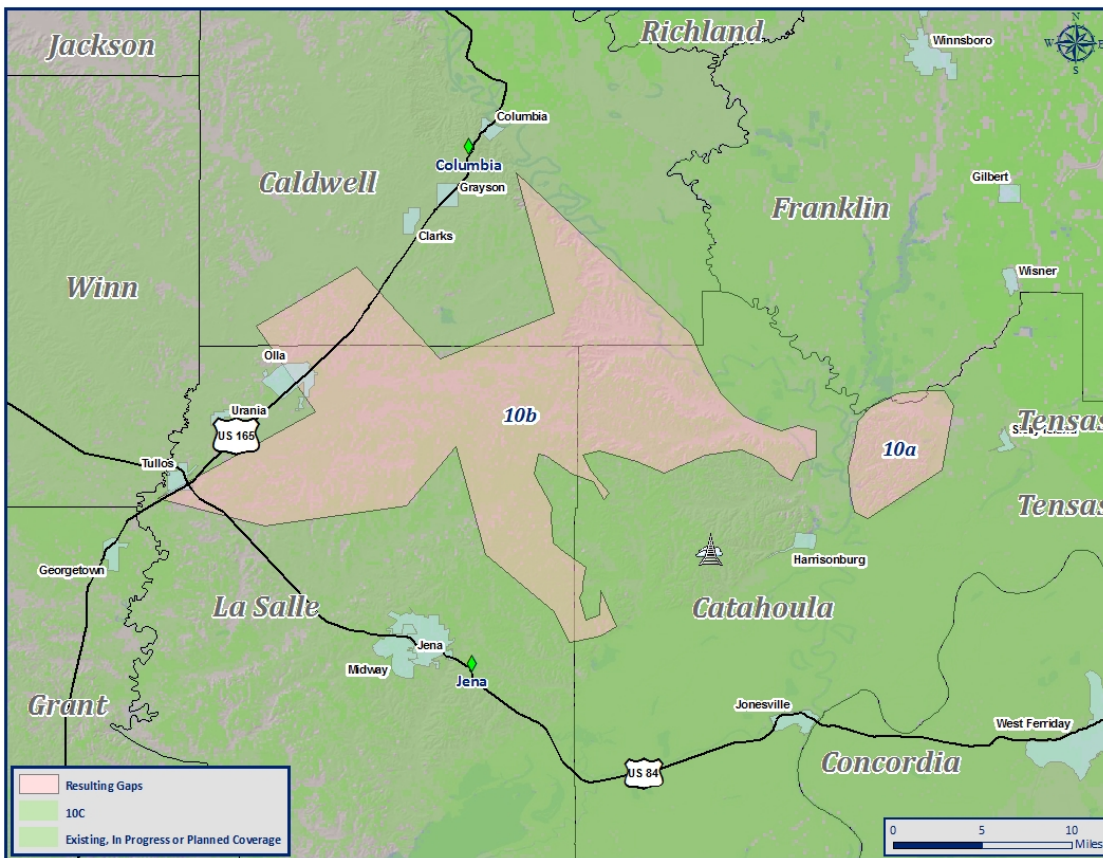


	Existing in Gap 10	Remaining with New Coverage	Percent of Change
Area (Square Miles)	440	194	55.91%
People	5,344	29	99.46%
Roads	145	54	62.76%
Urban Areas	2.86	1.07	62.59%

### Previous Gap:



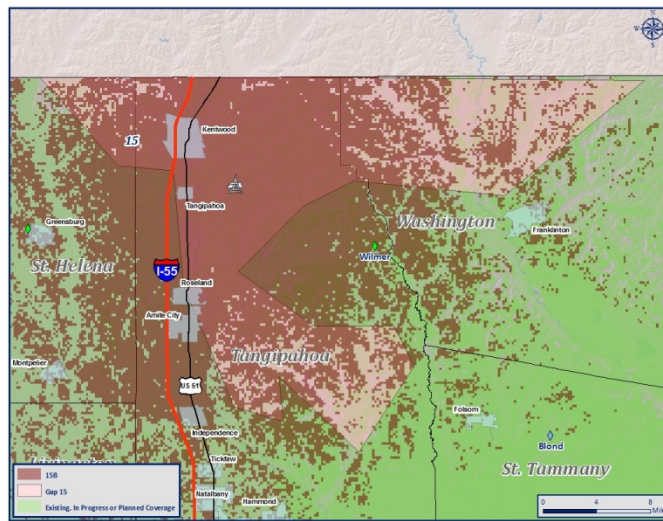
### Resulting Gaps:



# Gap 15: Proposed Solutions

Site near 15B

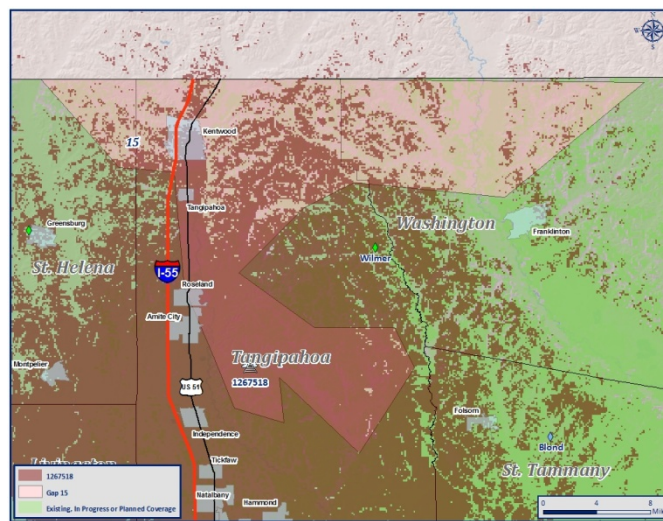
Location: 30.886322, -90.458351



	Existing in Gap 15	Remaining with New Coverage	Percent of Change
Area (Square Miles)	394	218	44.67%
People	15,775	7,093	55.04%
Roads	223	94	57.85%
Urban Areas	9.24	0	100%

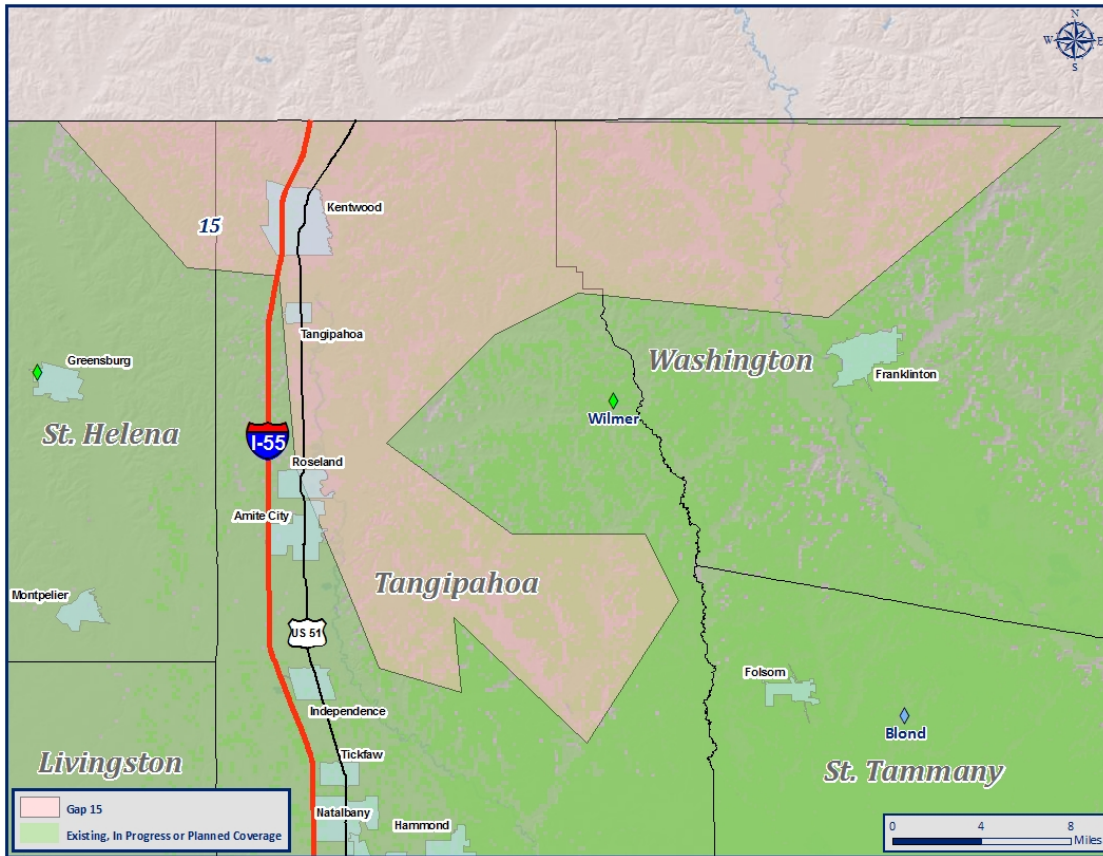
ASR: 1267518

Location: 30.694402, -90.443866

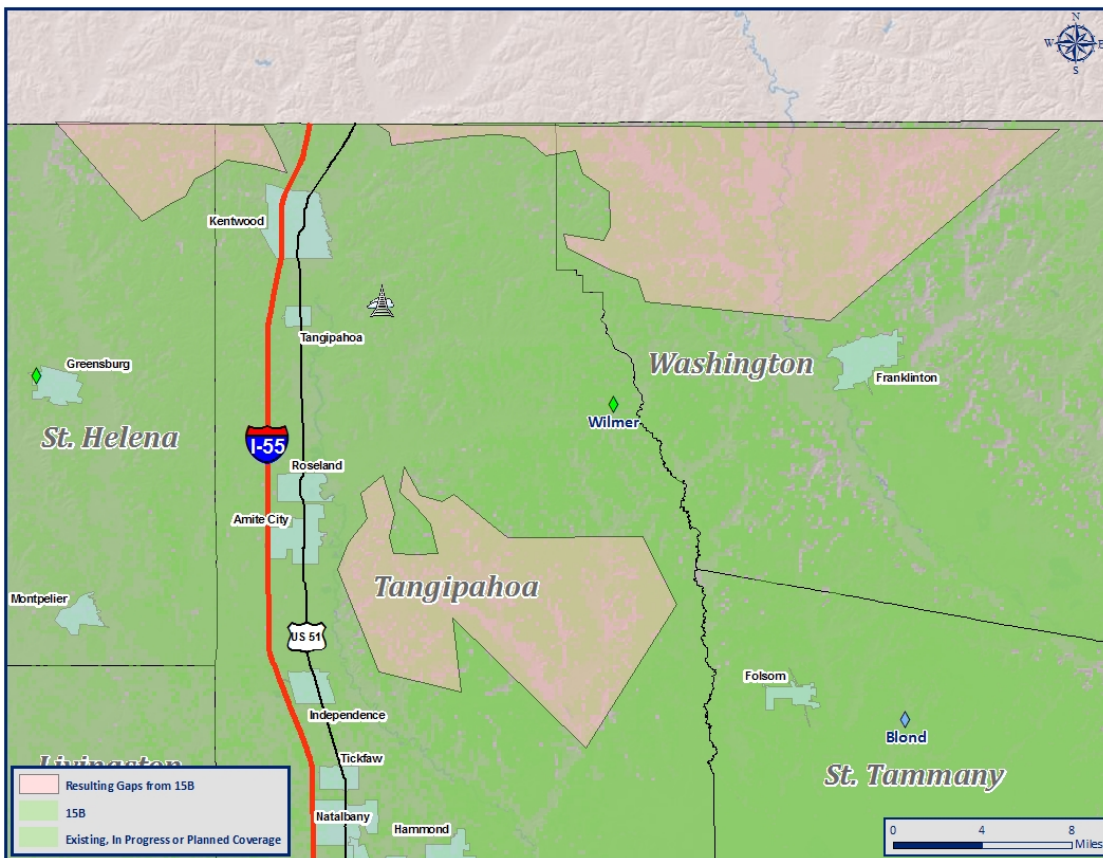


	Existing in Gap 15	Remaining with New Coverage	Percent of Change
Area (Square Miles)	394	281	28.69%
People	15,775	10,680	32.30%
Roads	223	167	25.11%
Urban Areas	9.24	5.77	37.55%

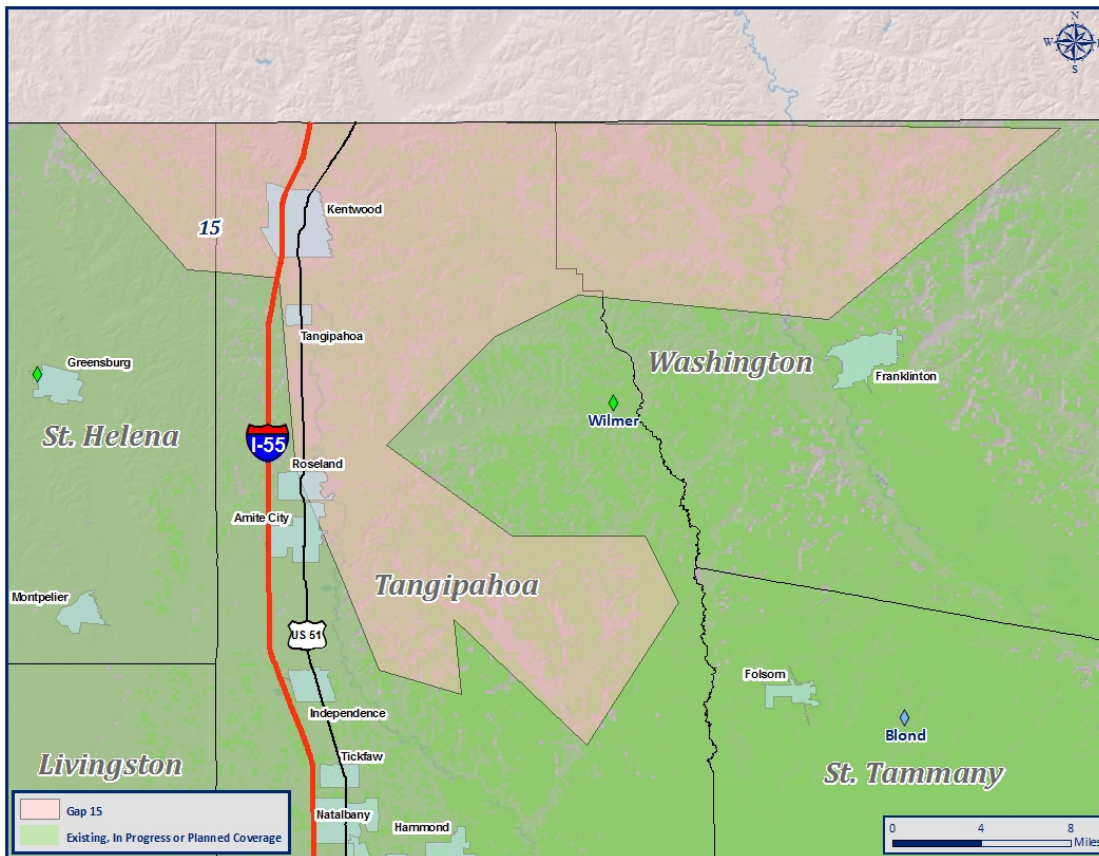
### Previous Gap:



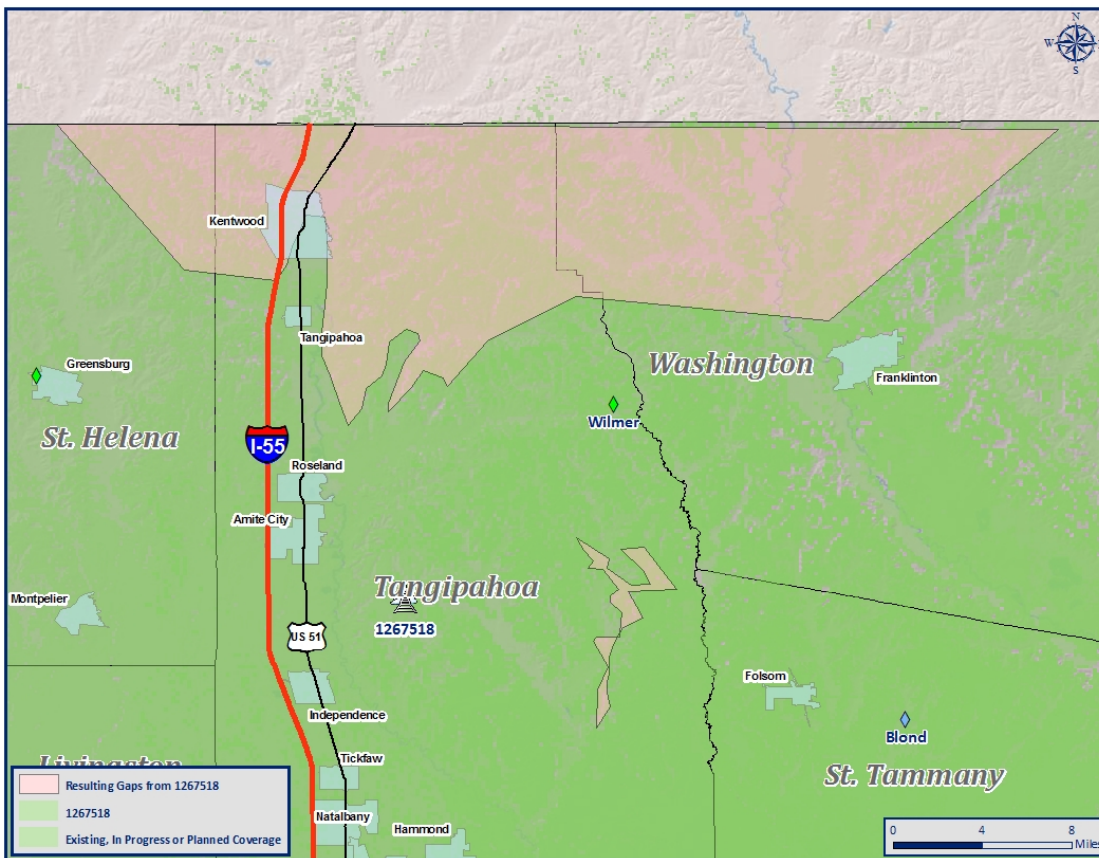
### Resulting Gaps with 15B:



### Previous Gap:



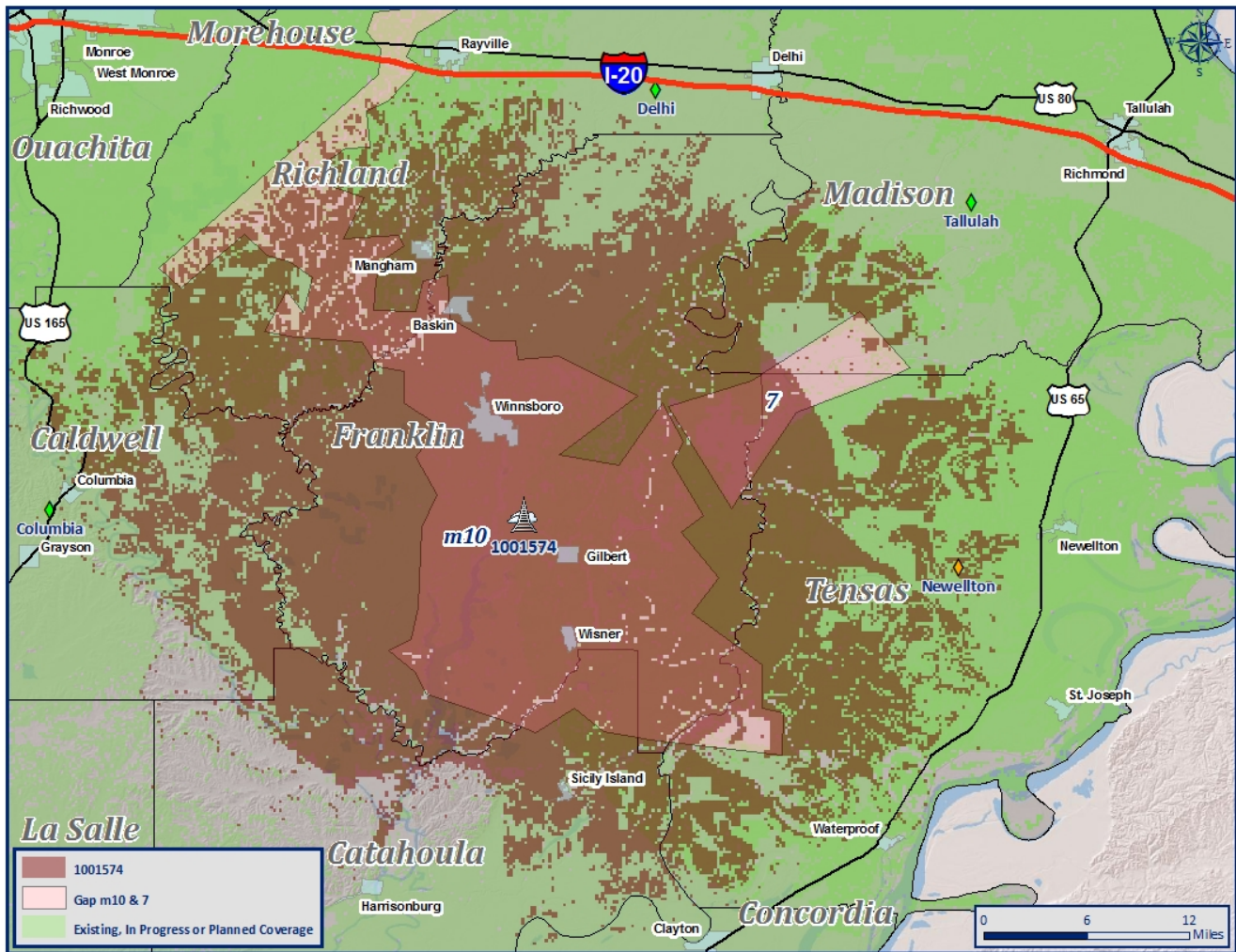
### Resulting Gaps with 1267518:



# Gap m10: Proposed Solution

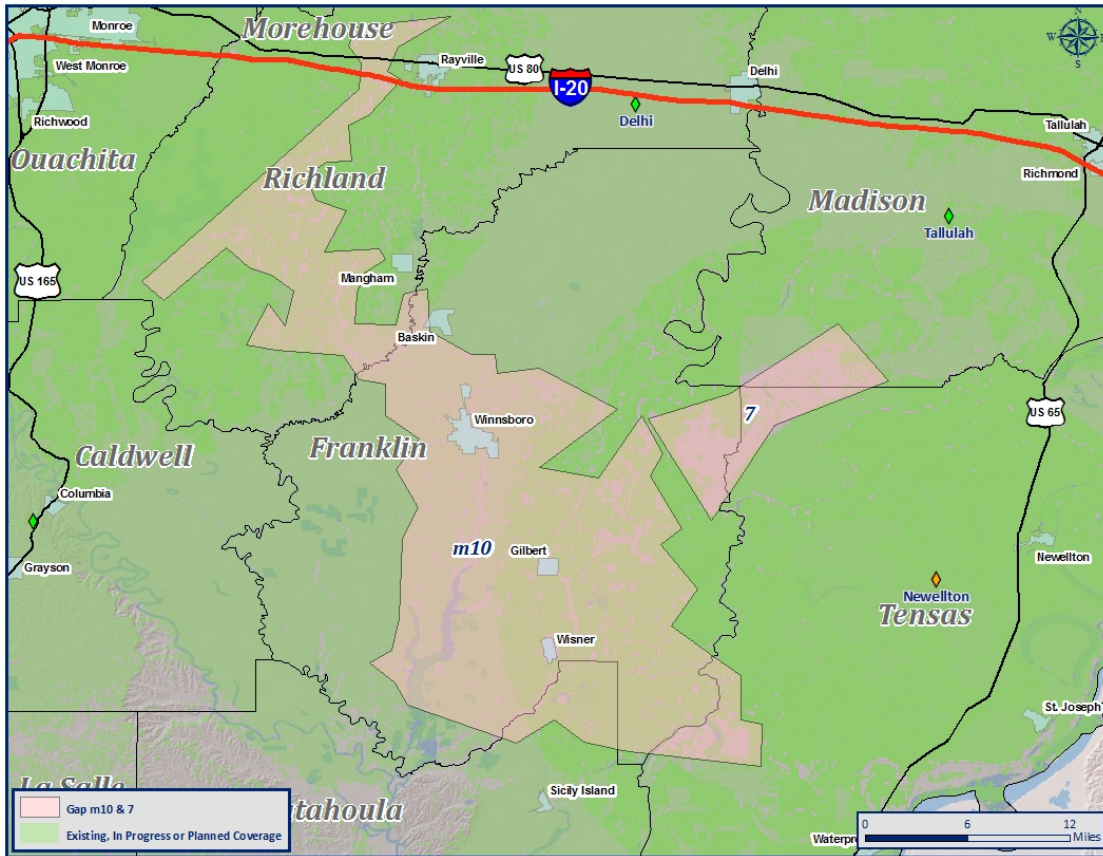
ASR: 1001574

Location: 32.082812, -91.693553

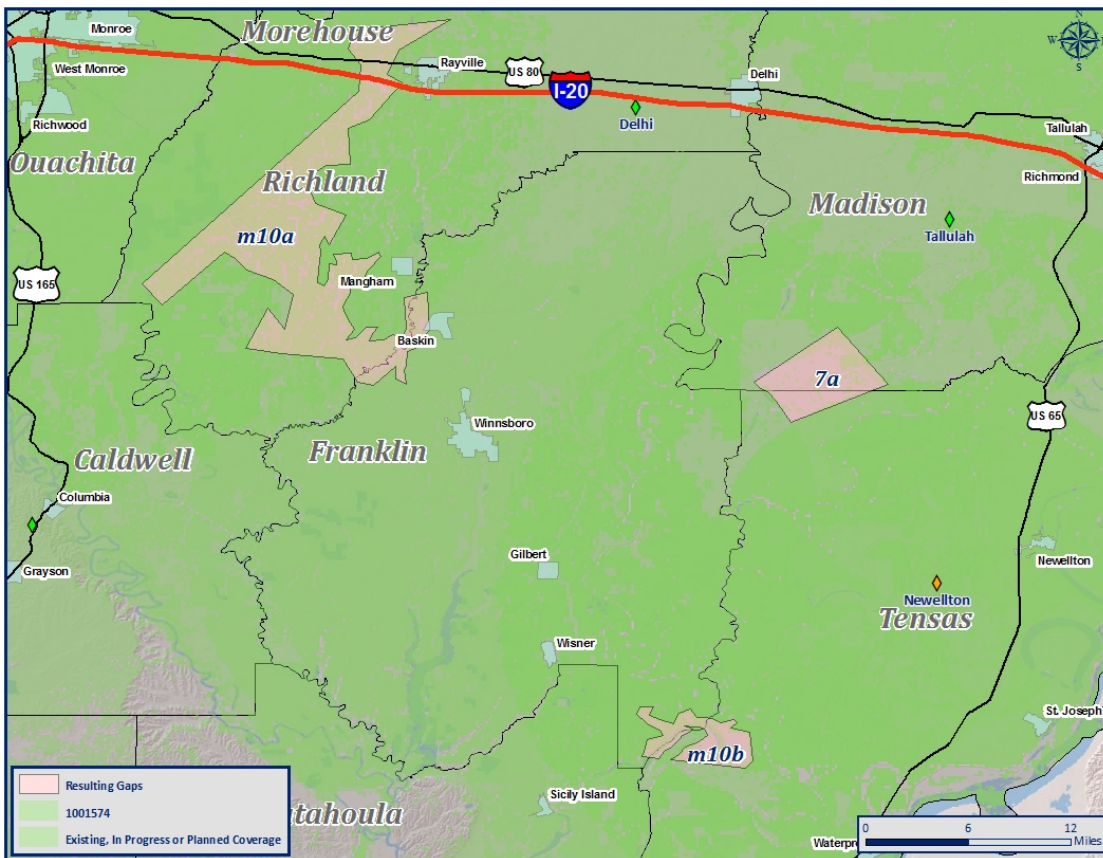


	Existing in Gap m10 & 7	Remaining with New Coverage	Percent of Change
Area (Square Miles)	435	141	67.59%
People	17,195	1,348	92.16%
Roads	195	56	71.28%
Urban Areas	7.05	1.05	85.11%

### Previous Gap:



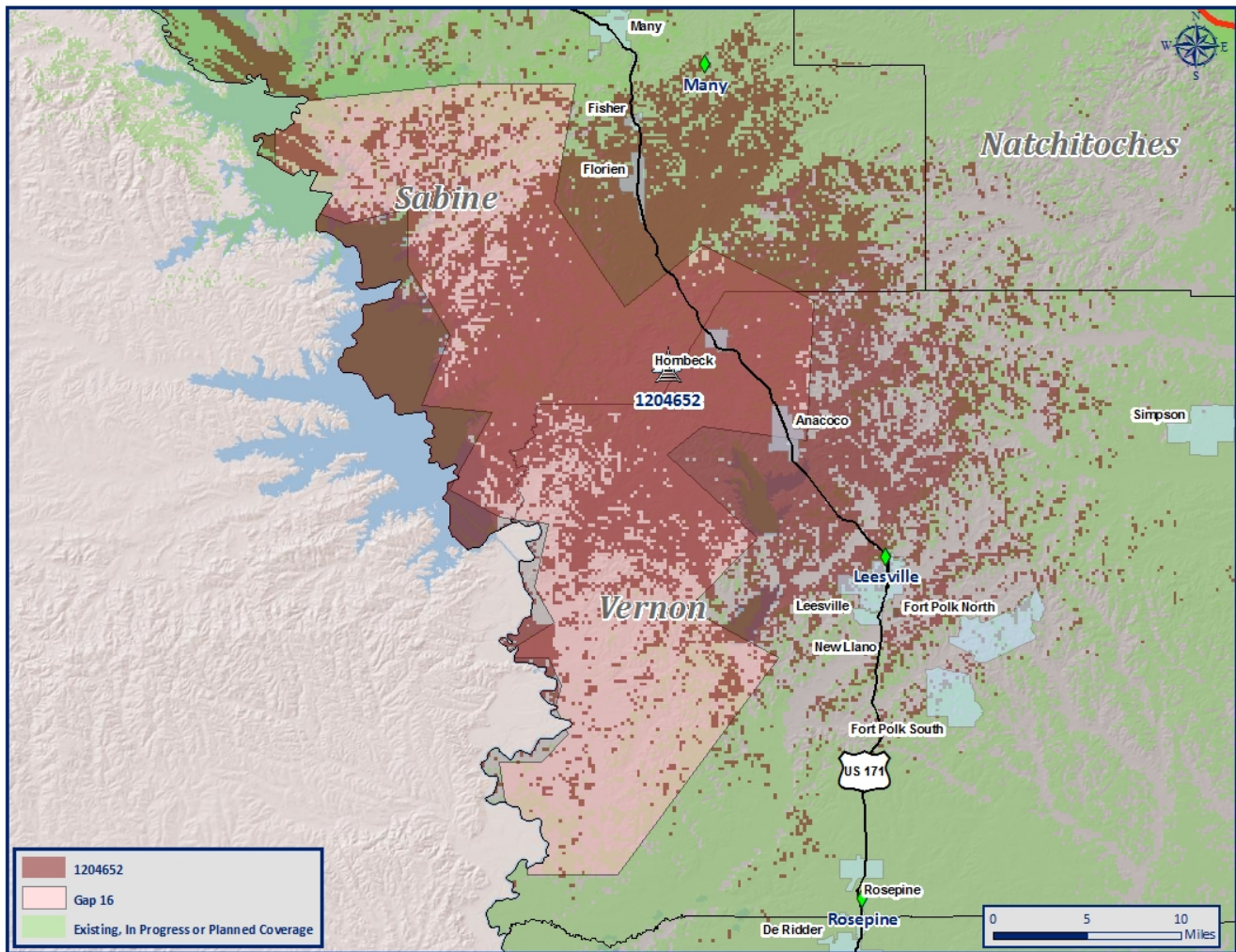
### Resulting Gaps:



# Gap 16: Proposed Solution

ASR: 1204652

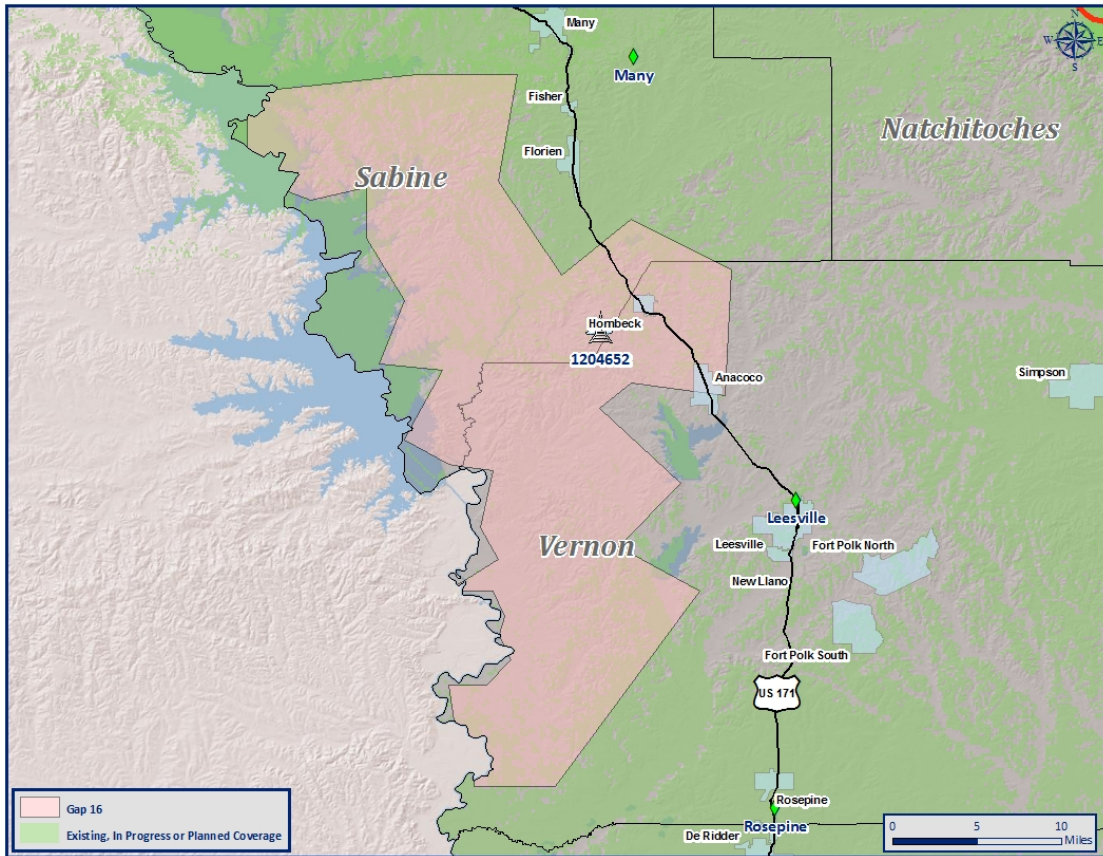
Location: 31.308285, -93.433926



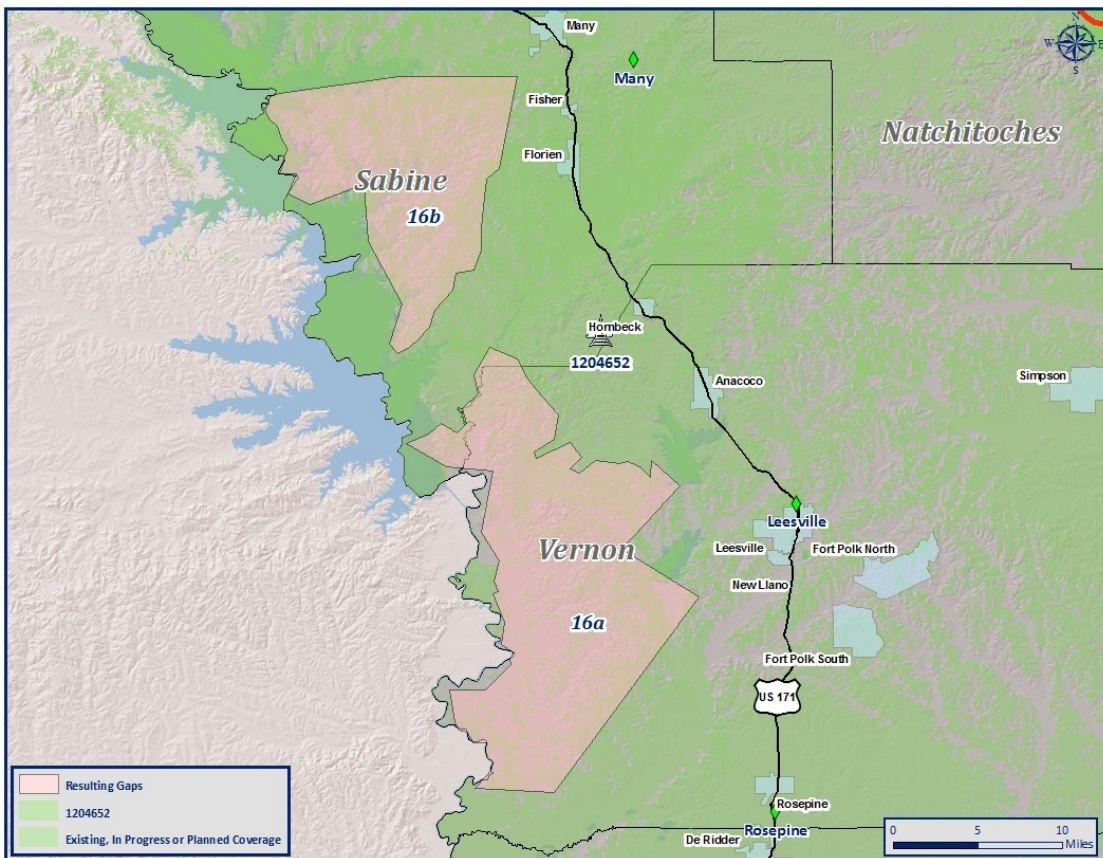
	Existing in Gap 16	Remaining with New Coverage	Percent of Change
Area (Square Miles)	447	288	35.57%
People	7,373	4,310	41.54%
Roads	132	85	35.61%
Urban Areas	2.95	0	100%



### Previous Gap:



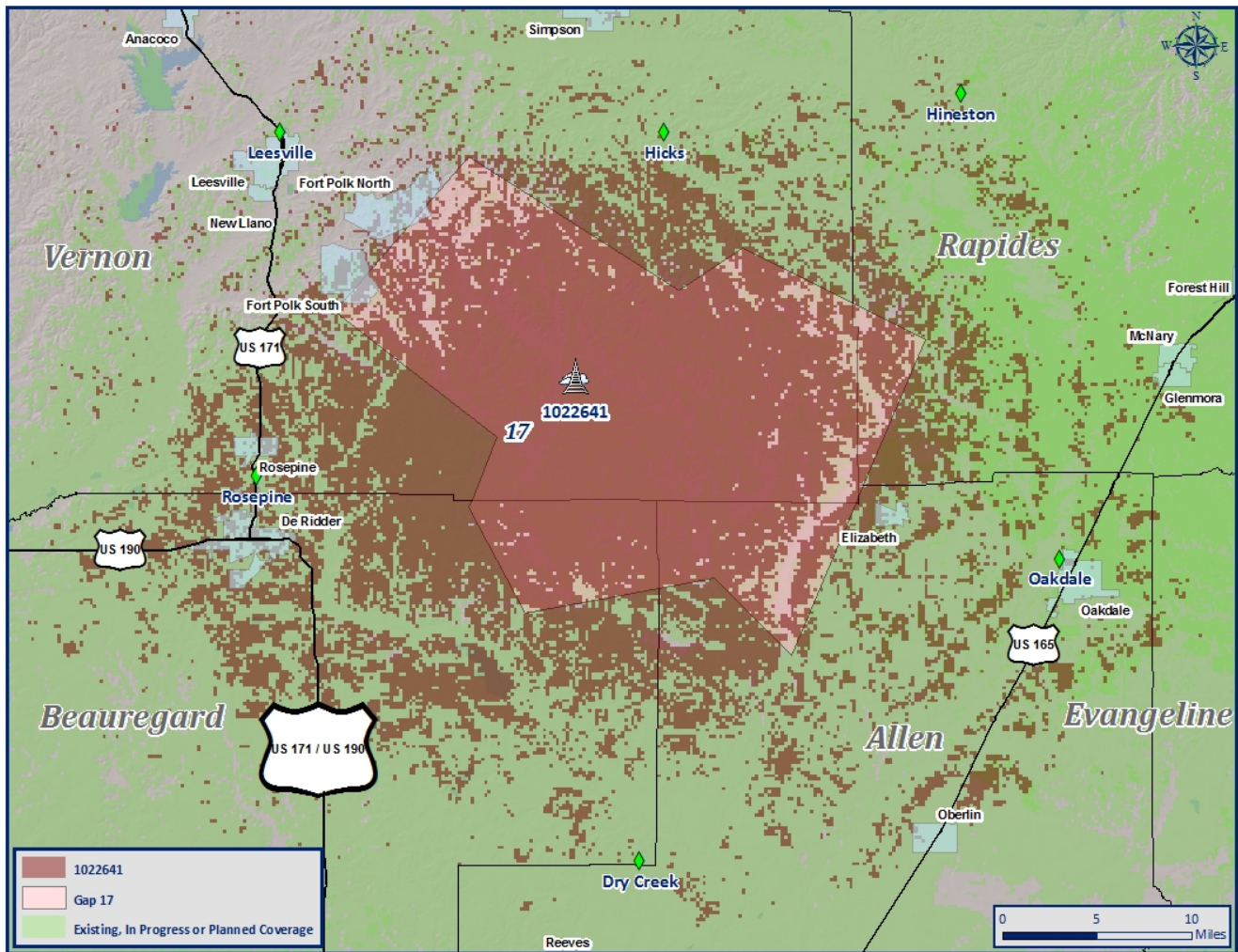
### Resulting Gaps:



# Gap 17: Proposed Solution

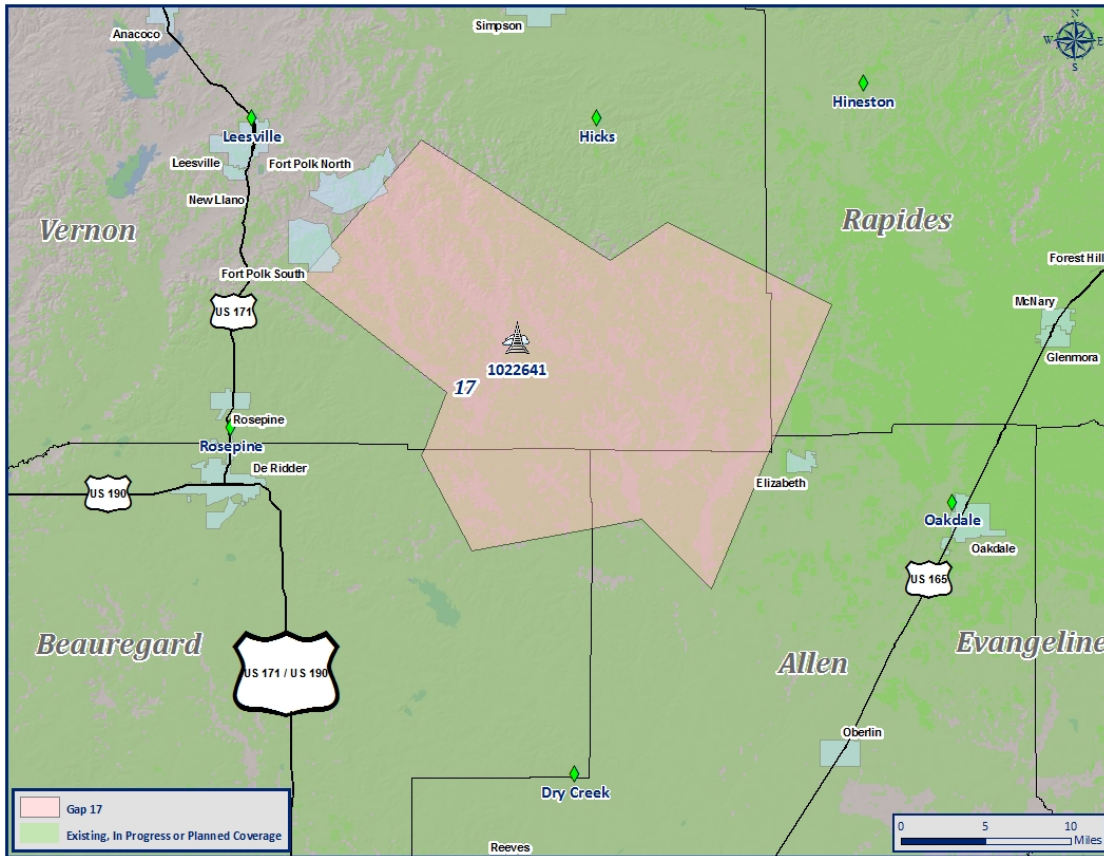
ASR: 1022641

Location: 30.971049, -93.039520

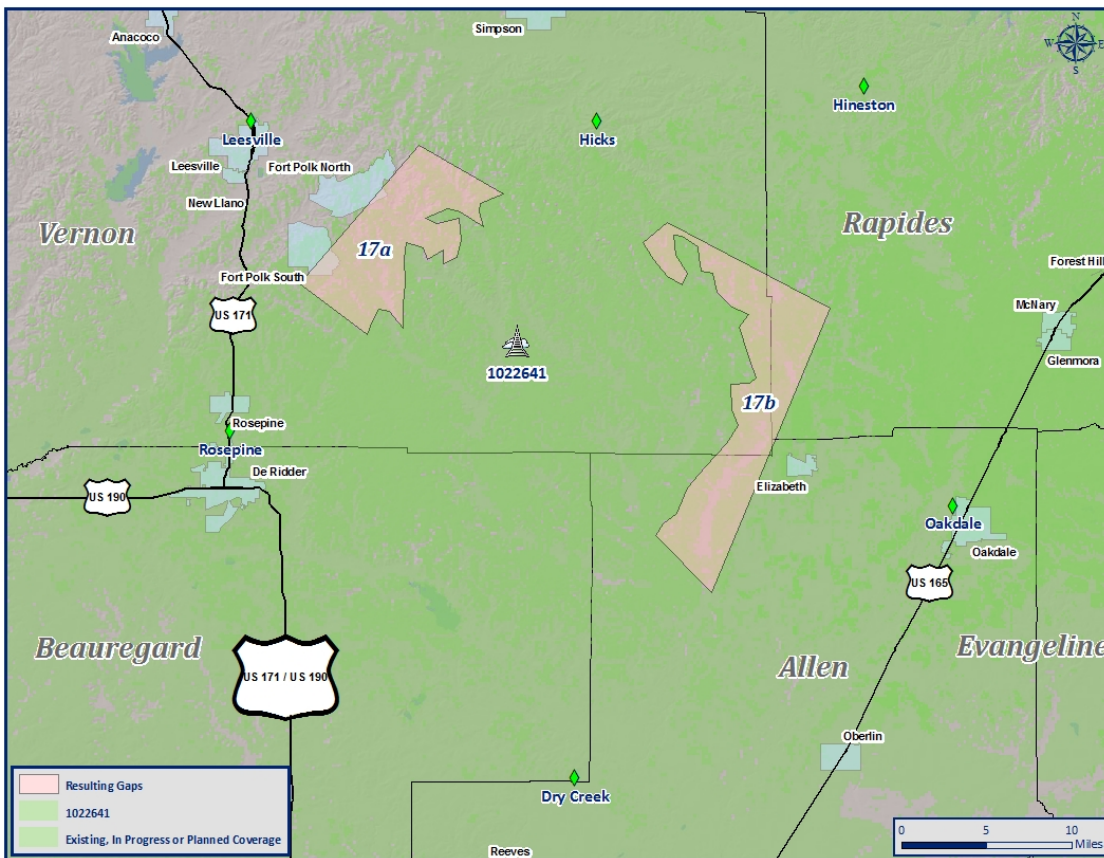


	Existing in Gap 17	Remaining with New Coverage	Percent of Change
Area (Square Miles)	229	62	72.93%
People	10,683	7,028	34.21%
Roads	104	11	89.42%
Urban Areas	1.72	1.72	0%

### Previous Gap:



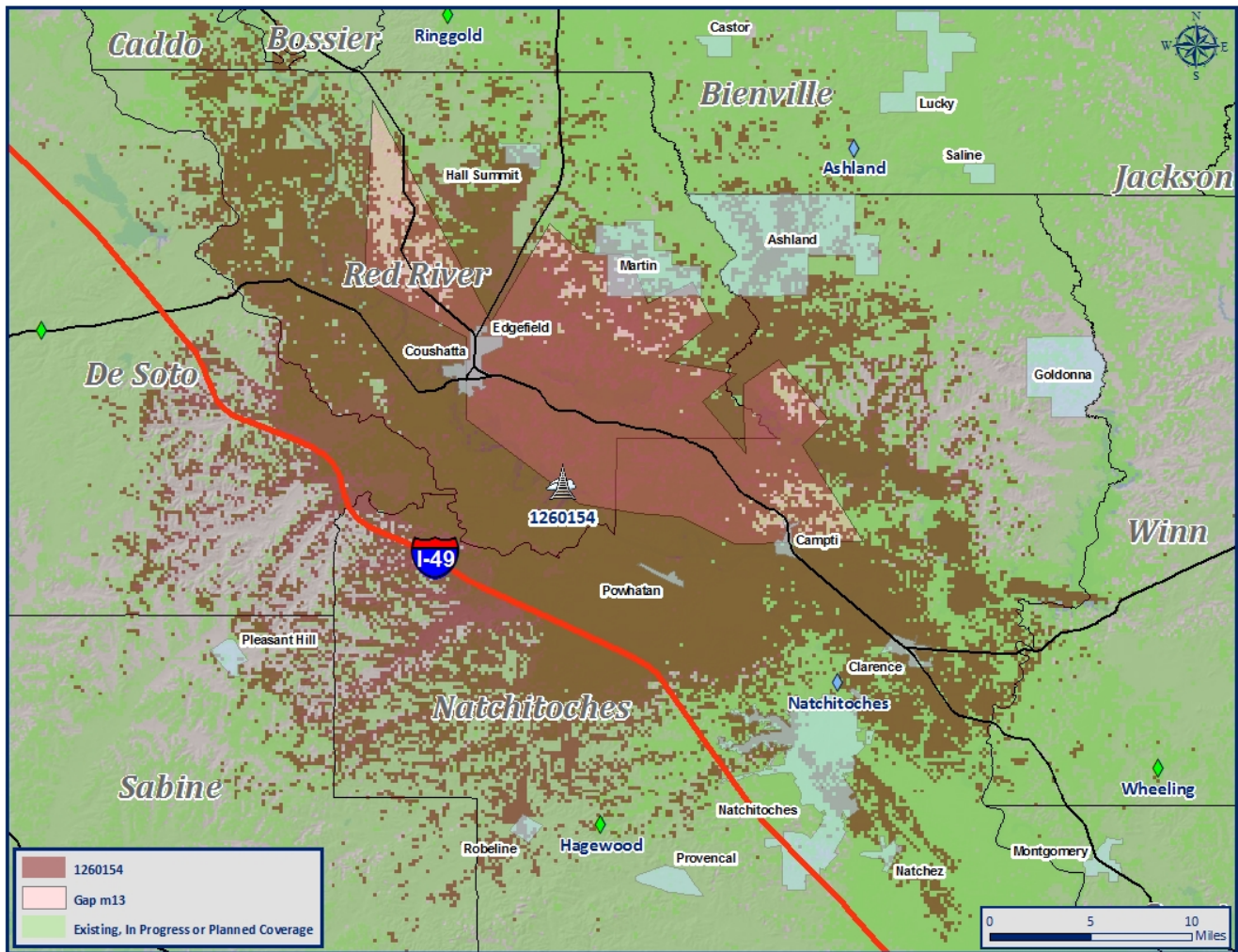
### Resulting Gaps:



# Gap m13: Proposed Solution

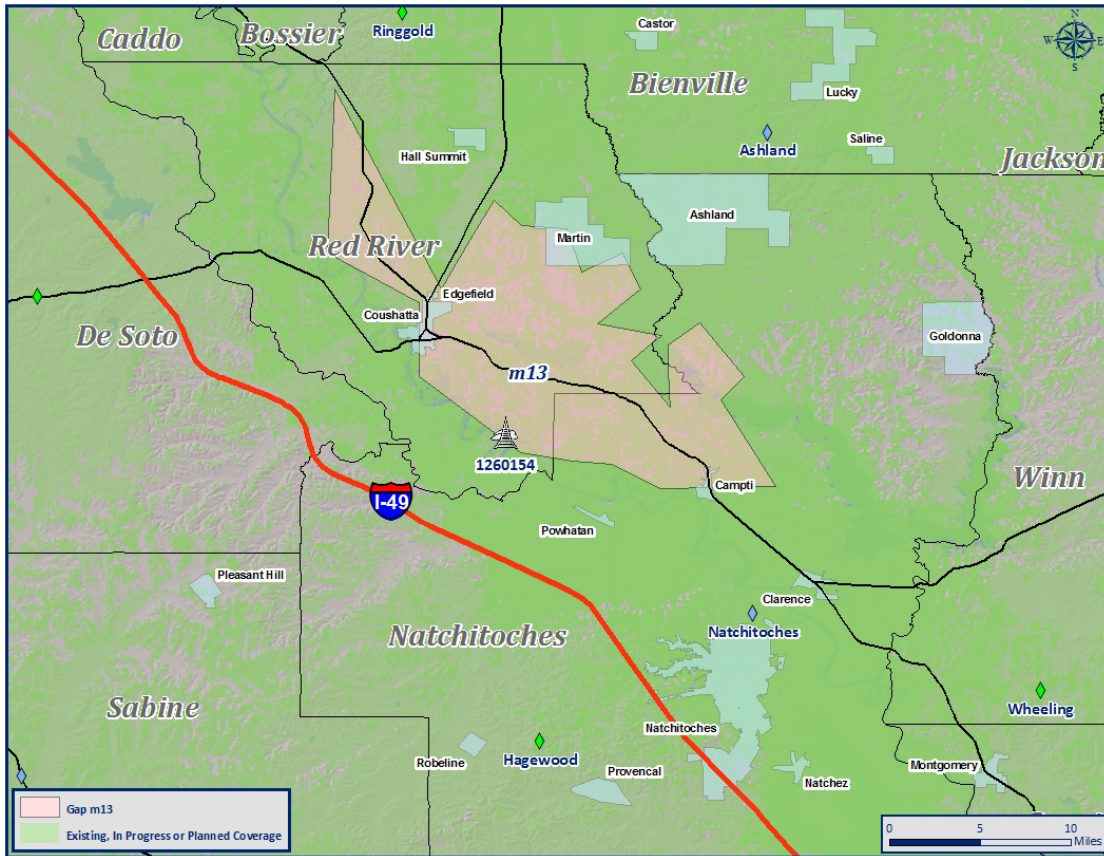
ASR: 1260154

Location: 31.941811, -93.275560

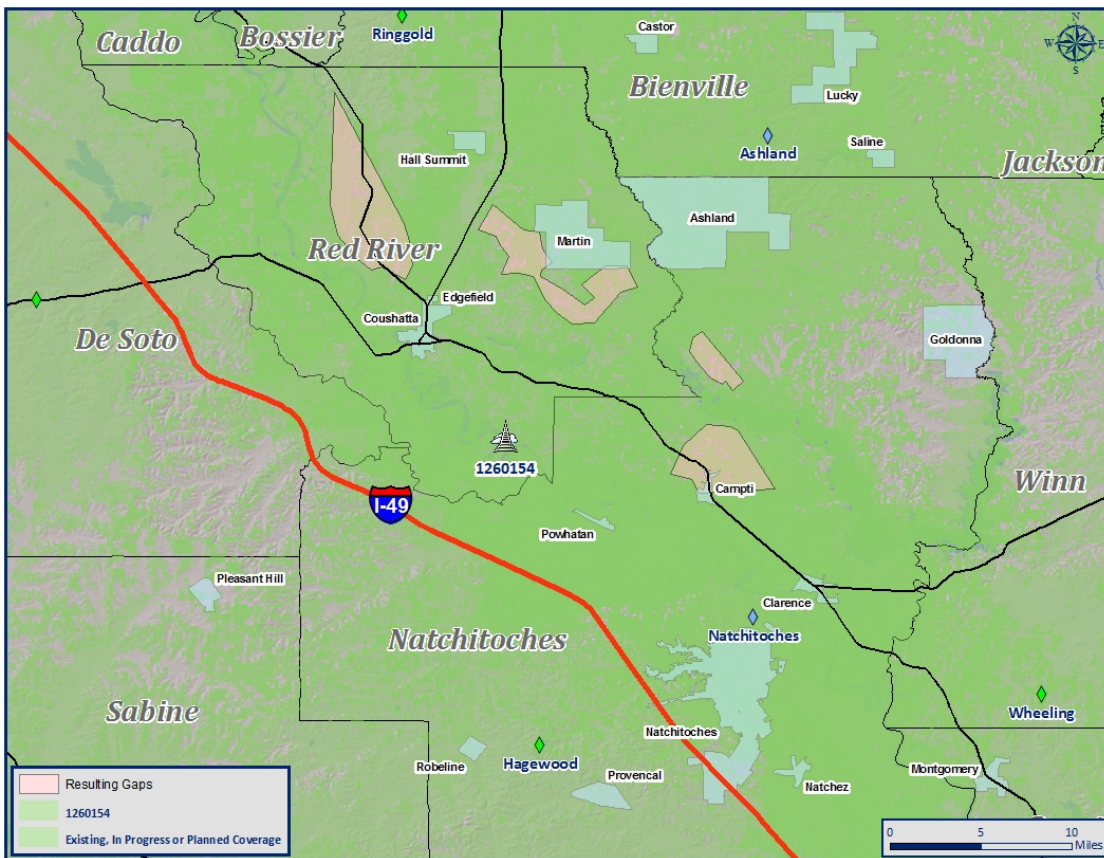


	Existing in Gap m13	Remaining with New Coverage	Percent of Change
Area (Square Miles)	171	22	87.13%
People	7,300	1,077	85.25%
Roads	93	33	64.52%
Urban Areas	0.44	0	100%

### Previous Gap:



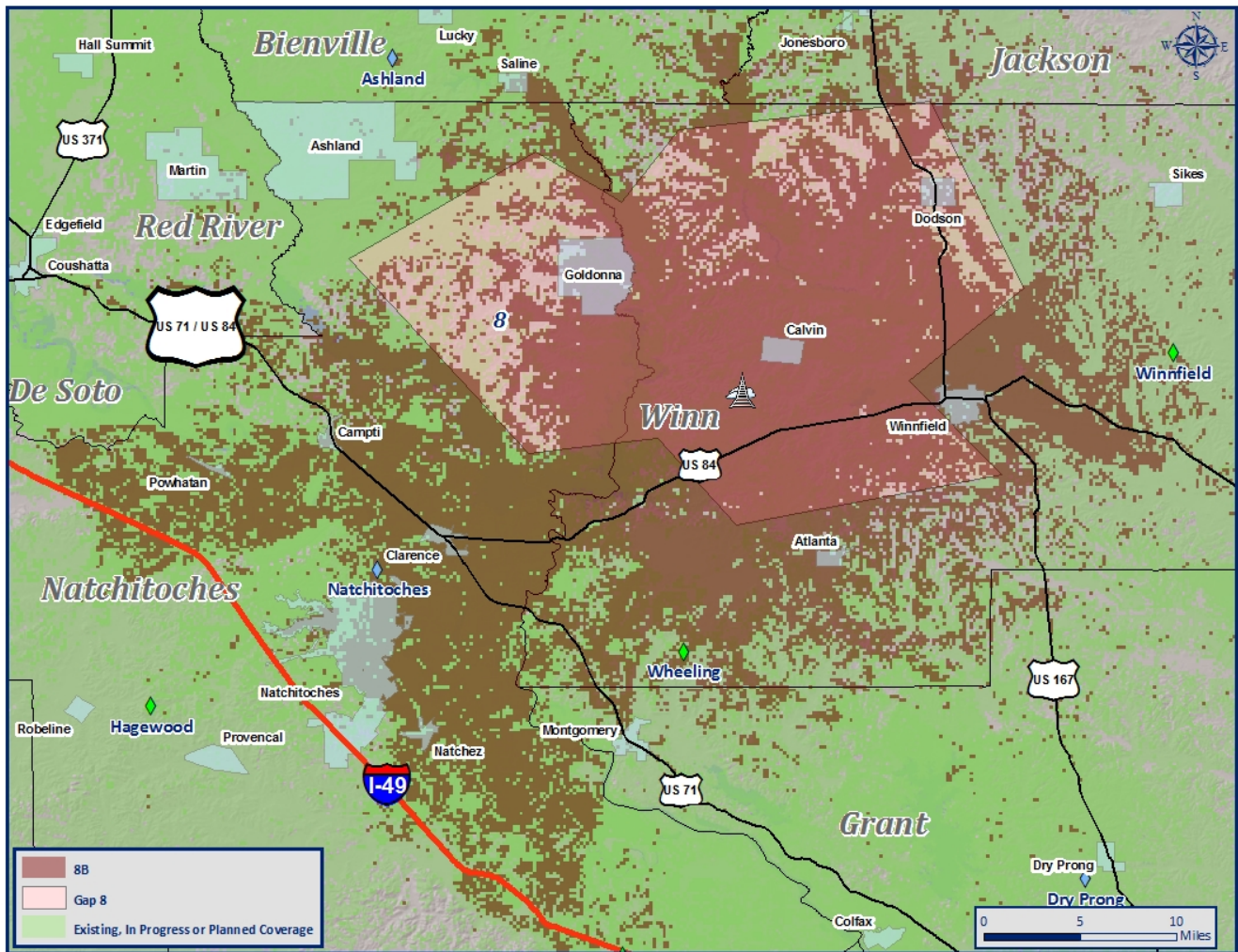
### Resulting Gaps:



# Gap 8: Proposed Solution

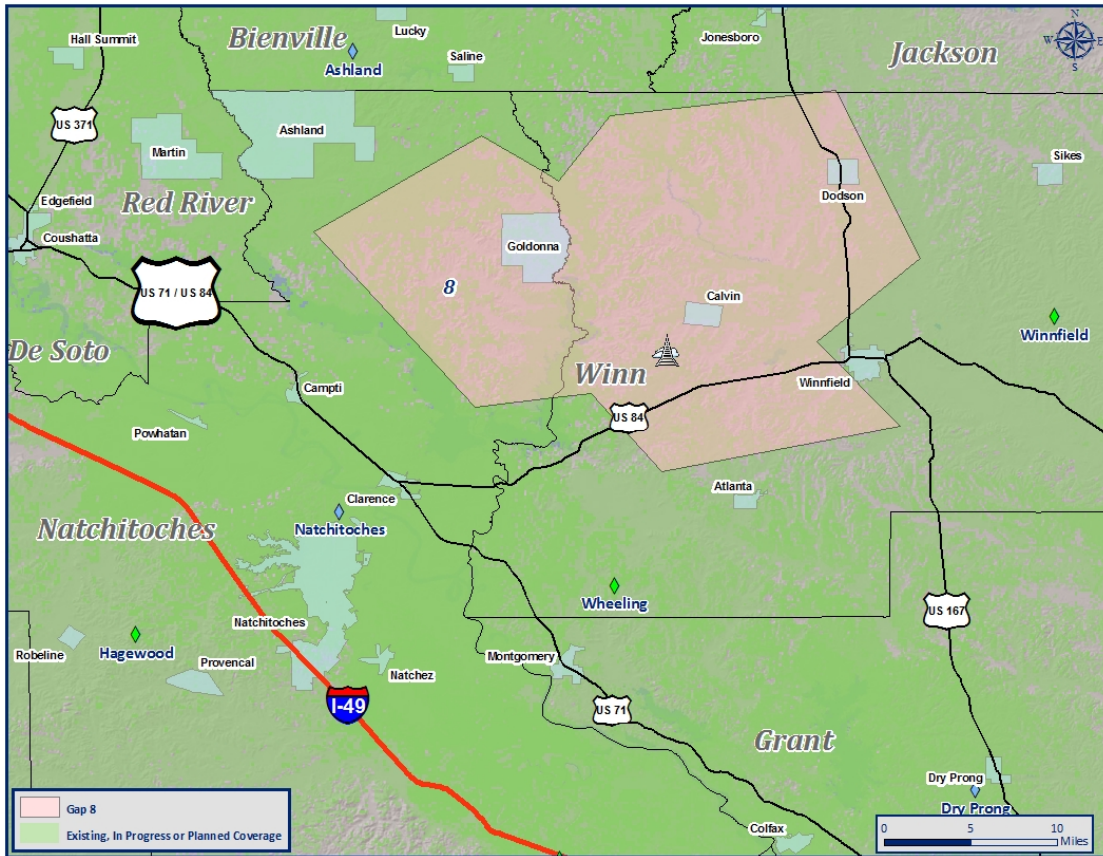
Site near 8B

Location: 31.930512, -92.803418

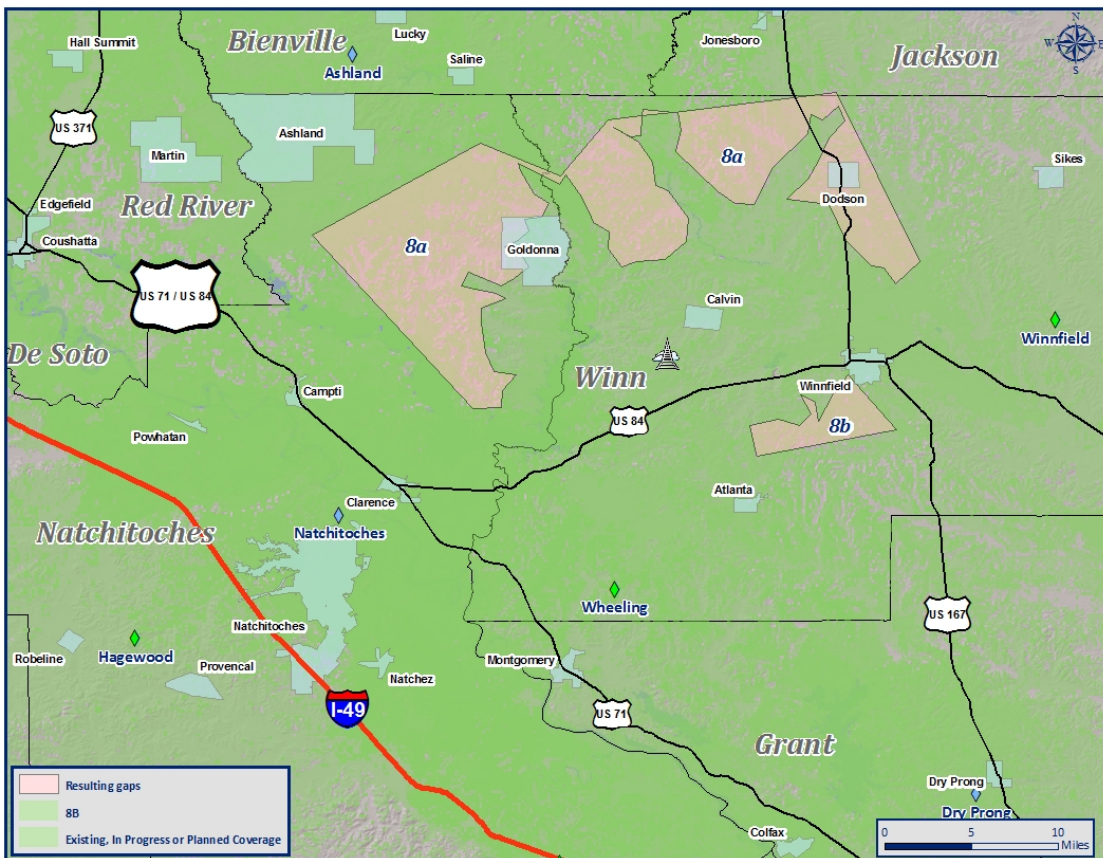


	Existing in Gap 8	Remaining with New Coverage	Percent of Change
Area (Square Miles)	411	155	62.29%
People	5,180	1,291	75.08%
Roads	155	64	58.71%
Urban Areas	15.56	4.54	70.76%

### Previous Gap:



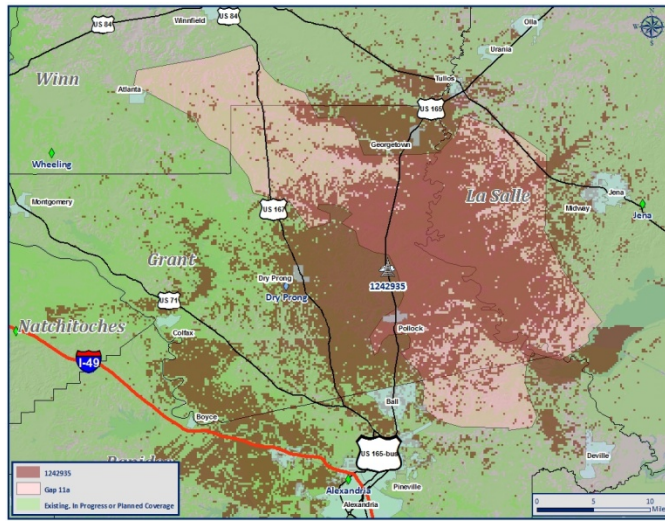
### Resulting Gaps:



# Gap 11a: Proposed Solutions

ASR: 1242935

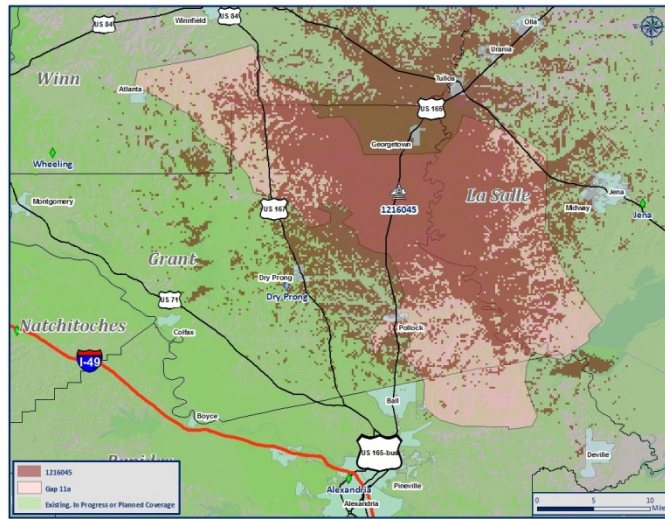
Location: 31.589511, -92.417828



	Existing in Gap 11a	Remaining with New Coverage	Percent of Change
Area (Square Miles)	450	272	39.56%
People	4,932	3,745	24.47%
Roads	106	69	34.91%
Urban Areas	1.36	0.1	92.65%

ASR: 1216045

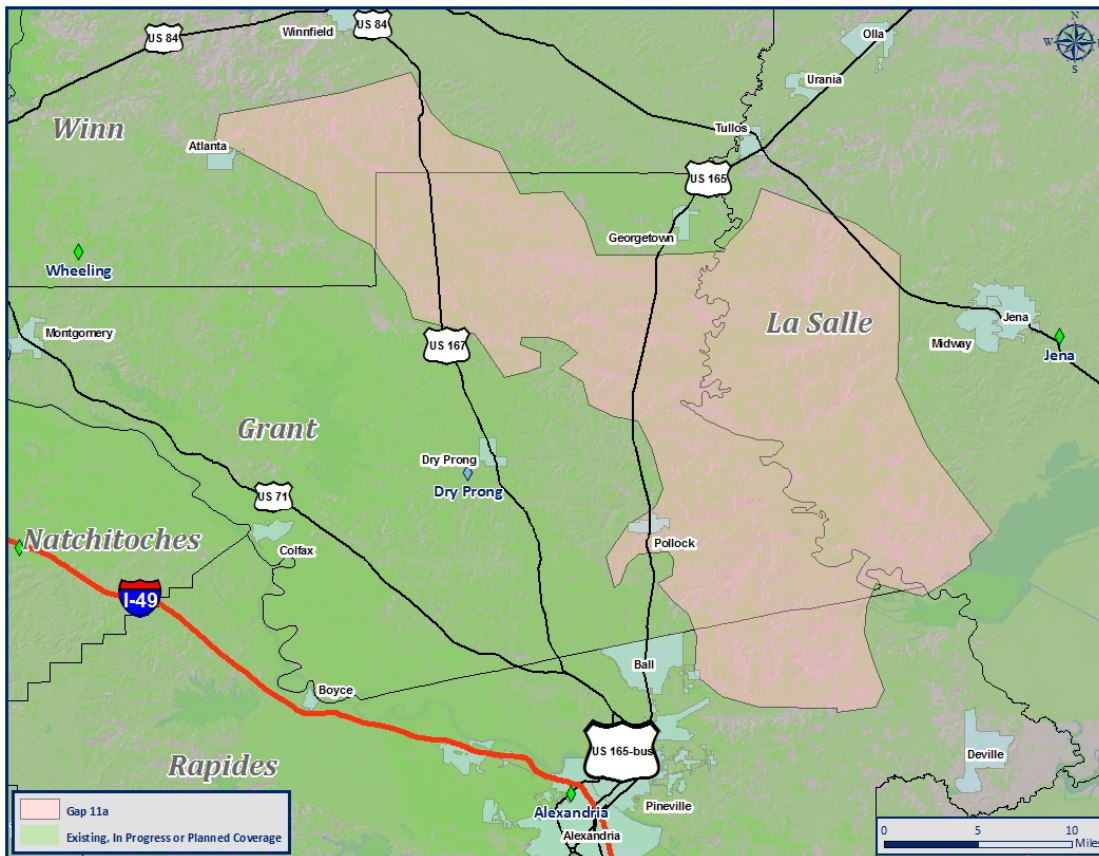
Location: 31.687389, -92.400998



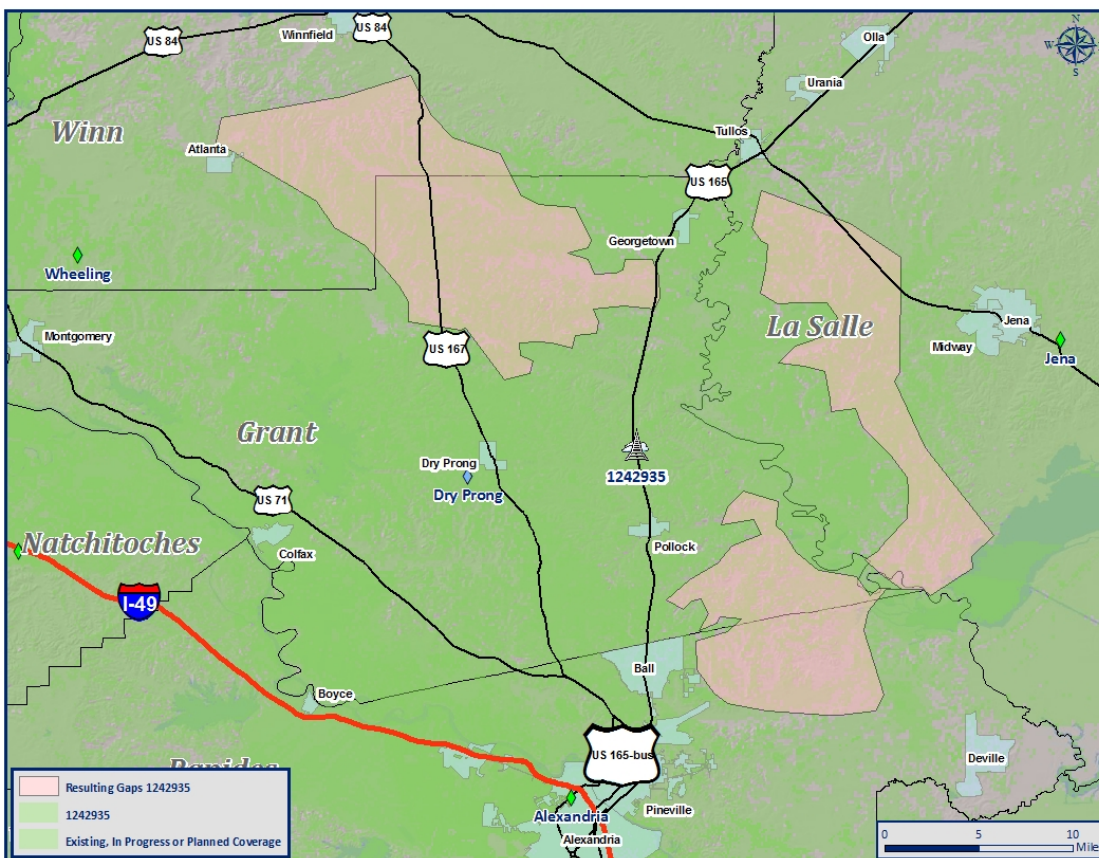
	Existing in Gap 11a	Remaining with New Coverage	Percent of Change
Area (Square Miles)	450	149	66.89%
People	4,932	1,149	76.70%
Roads	106	44	58.49%
Urban Areas	1.36	0.33	75.74%



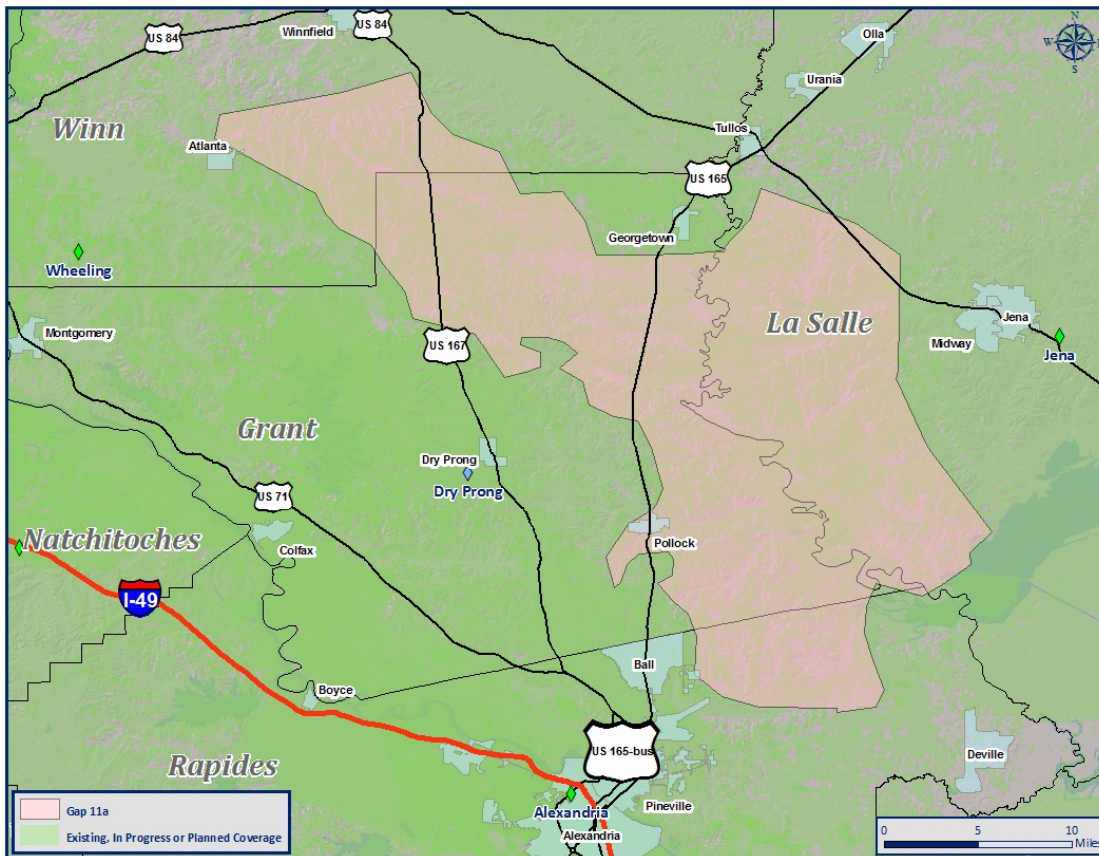
### Previous Gap:



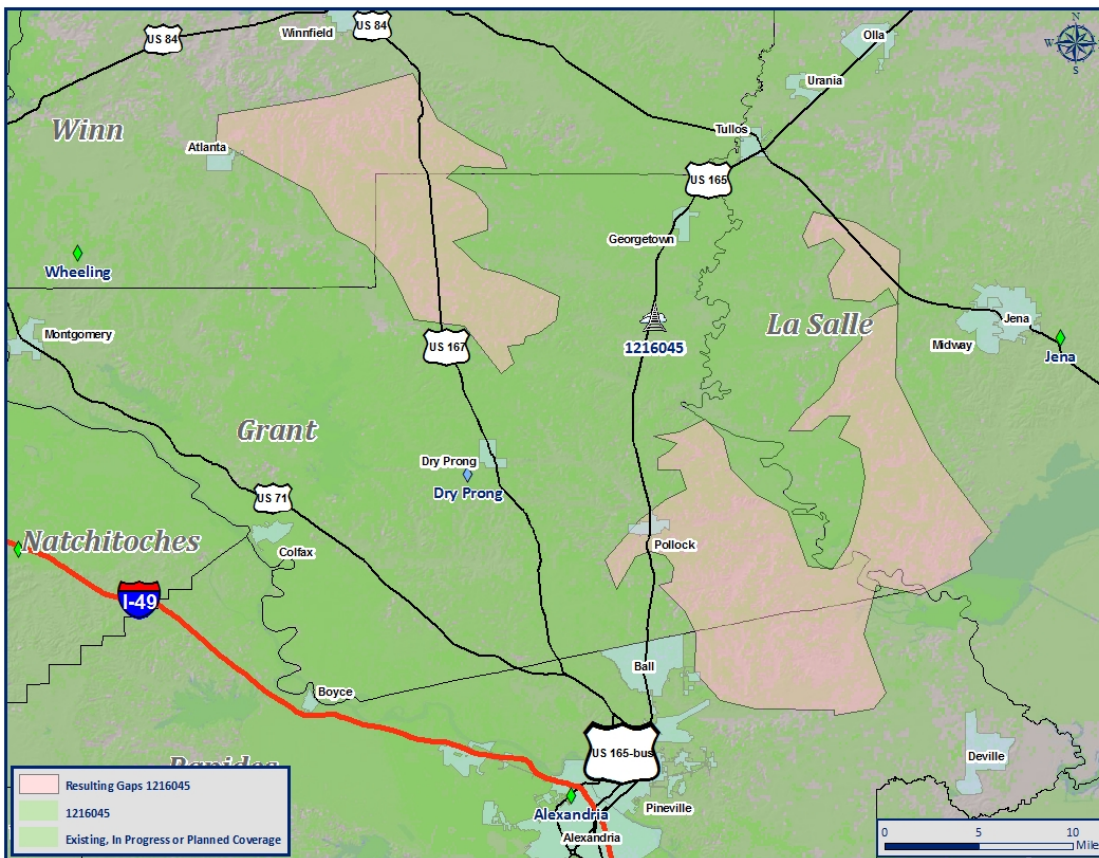
### Resulting Gaps with 1242935:



### Previous Gap:



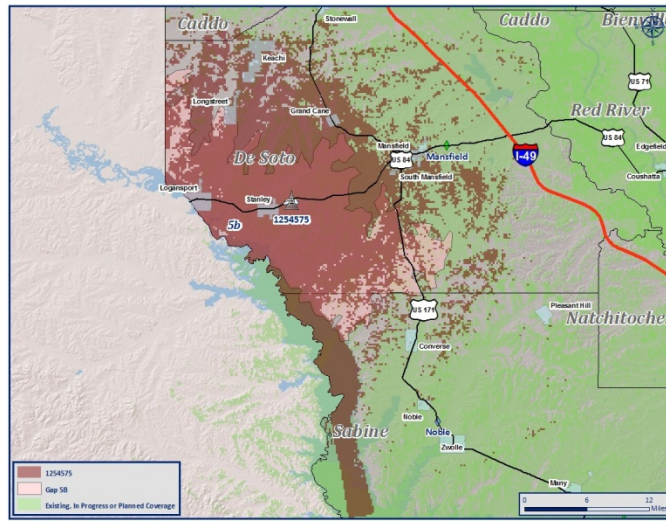
### Resulting Gaps with 1216045:



# Gap 5b: Proposed Solutions

ASR: 1254575

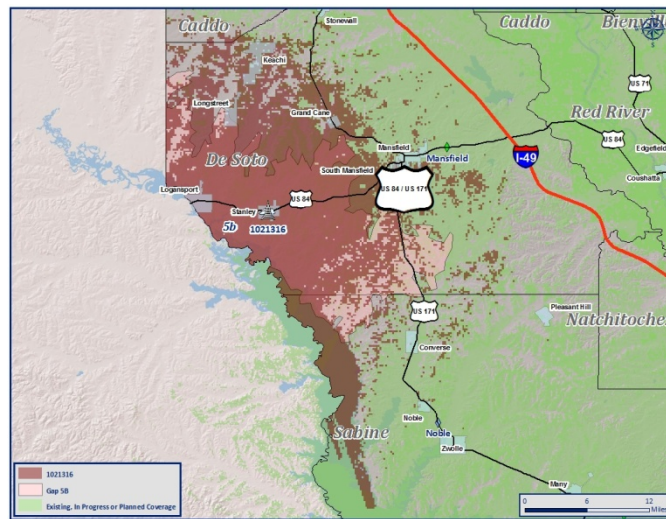
Location: 31.971342, -93.868728



	Existing in Gap 5b	Remaining with New Coverage	Percent of Change
Area (Square Miles)	234	85	63.68%
People	5,467	1,289	76.42%
Roads	70	26	62.86%
Urban Areas	6.38	1.02	84.01%

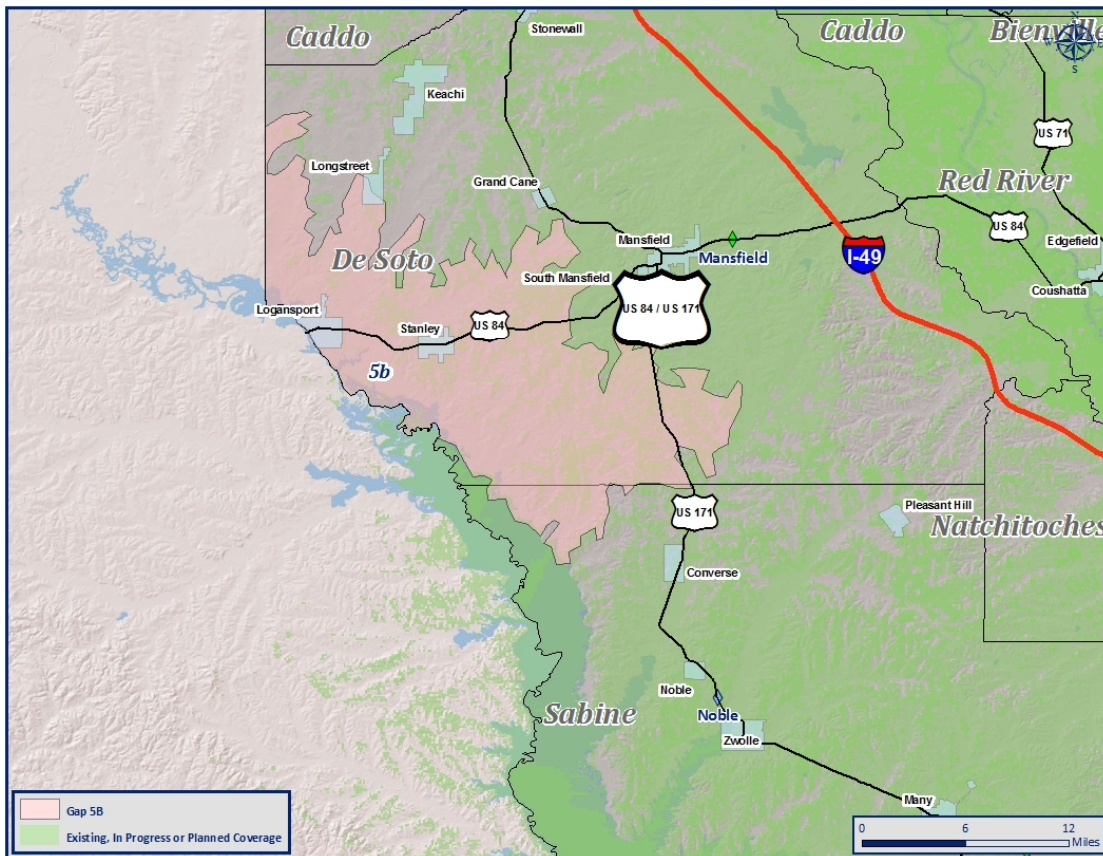
ASR: 1021316

Location: 31.964948, -93.900697

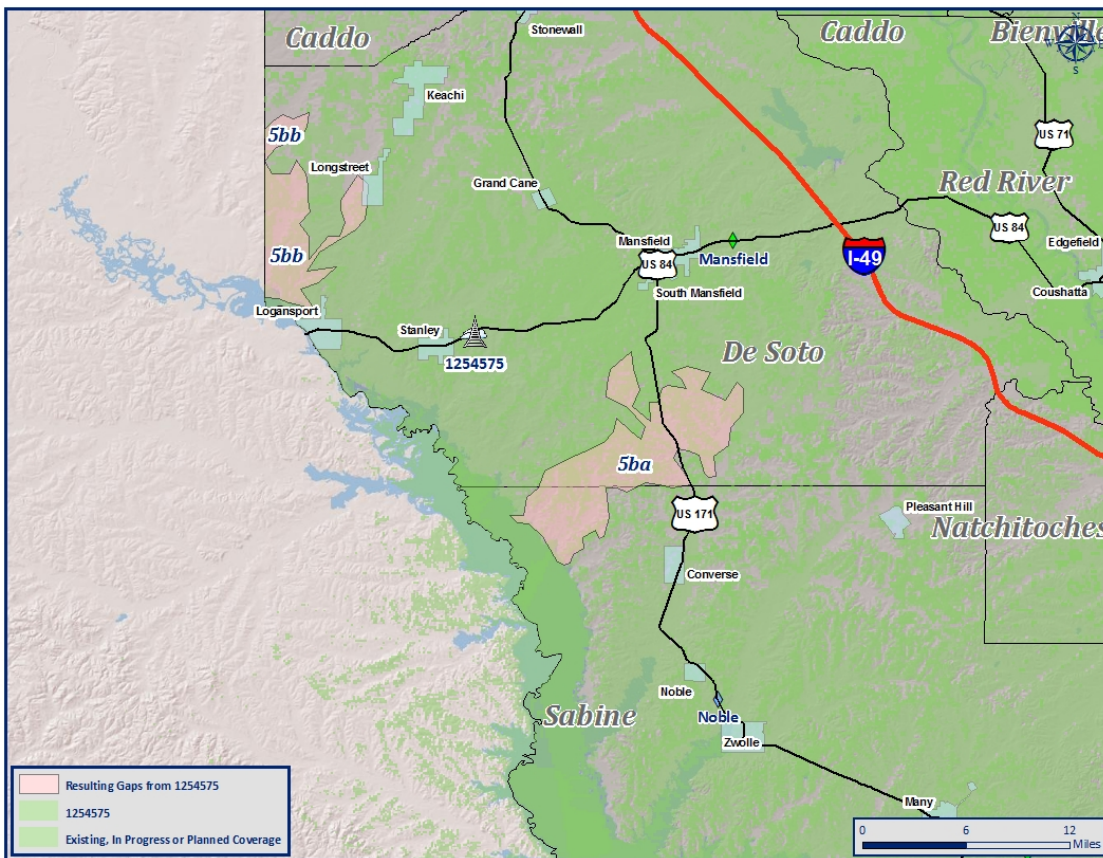


	Existing in Gap 5b	Remaining with New Coverage	Percent of Change
Area (Square Miles)	234	82	64.96%
People	5,467	1,162	78.75%
Roads	70	24	65.71%
Urban Areas	6.38	0.46	92.79%

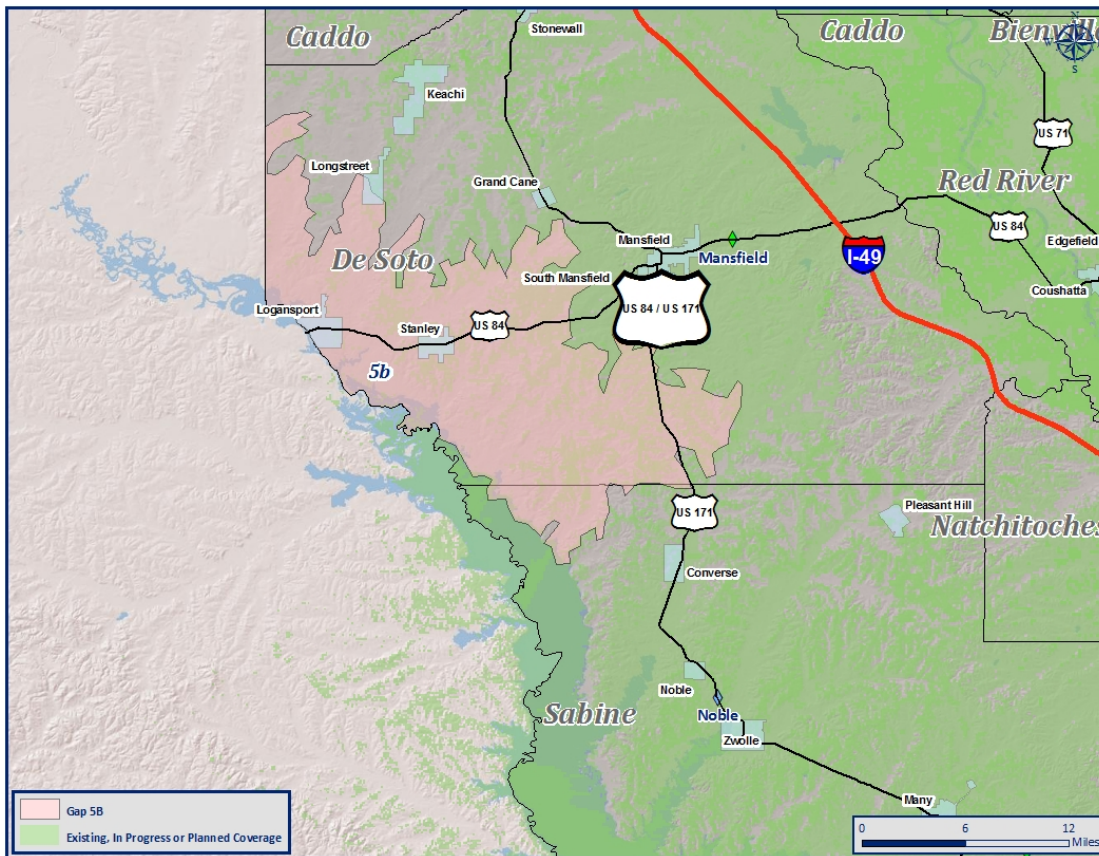
### Previous Gap:



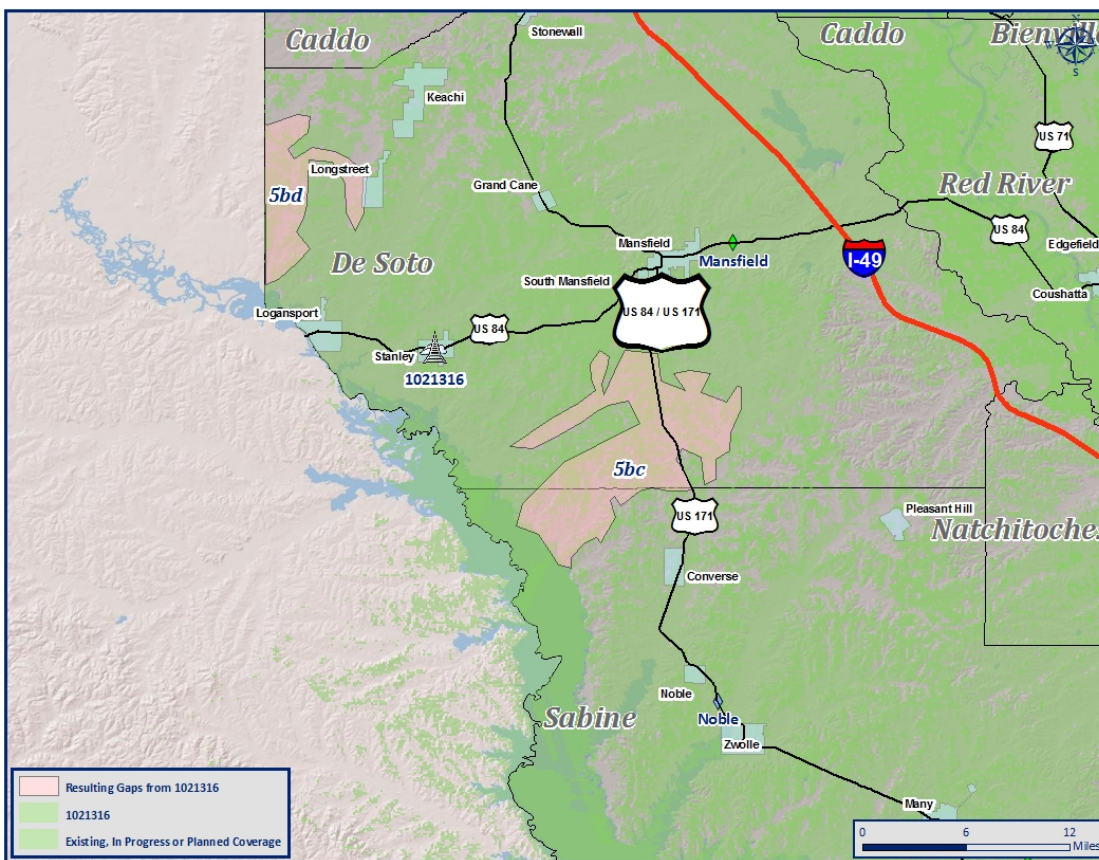
### Resulting Gaps with 1254575:



### Previous Gap:



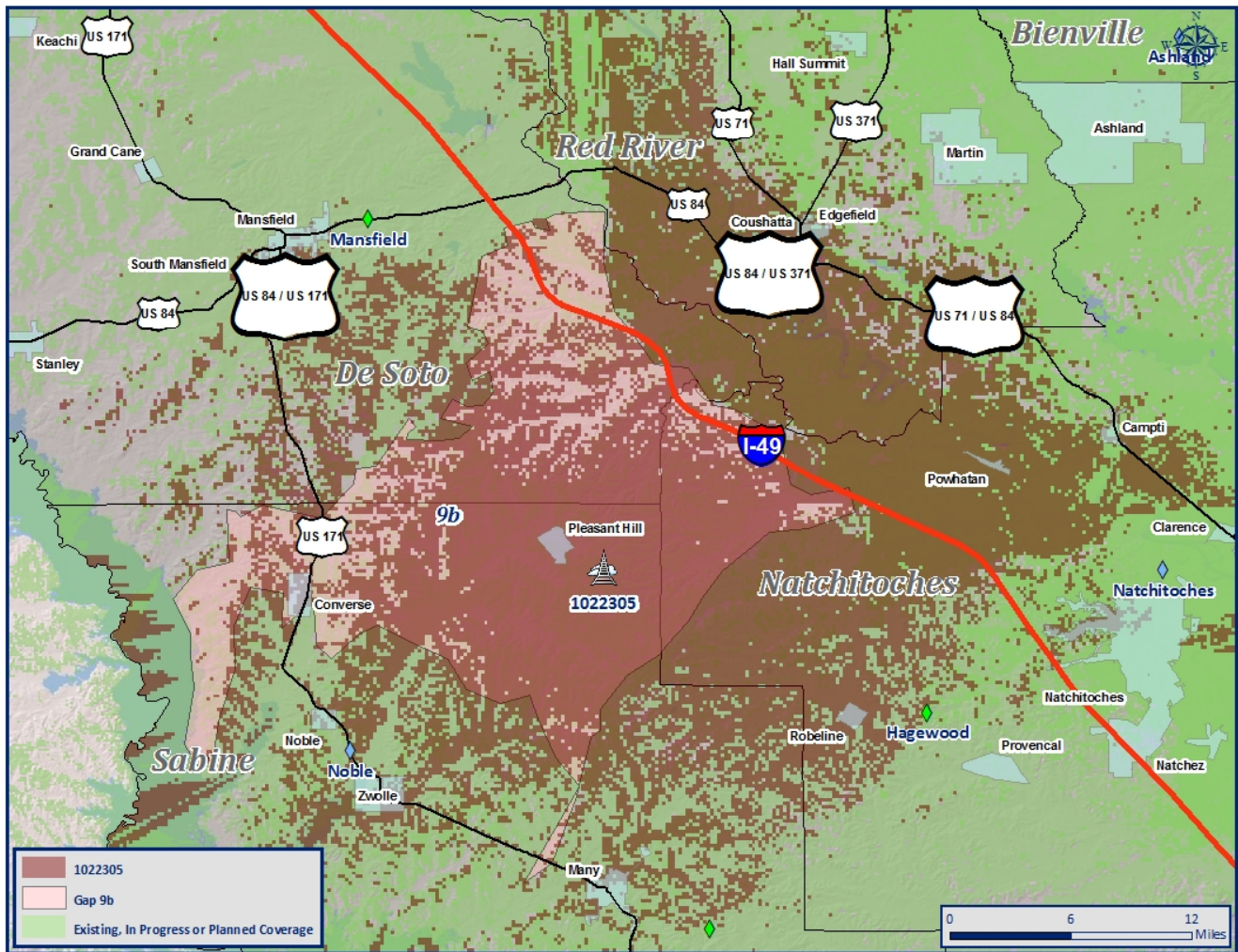
### Resulting Gaps with 1021316:



# Gap 9b: Proposed Solution

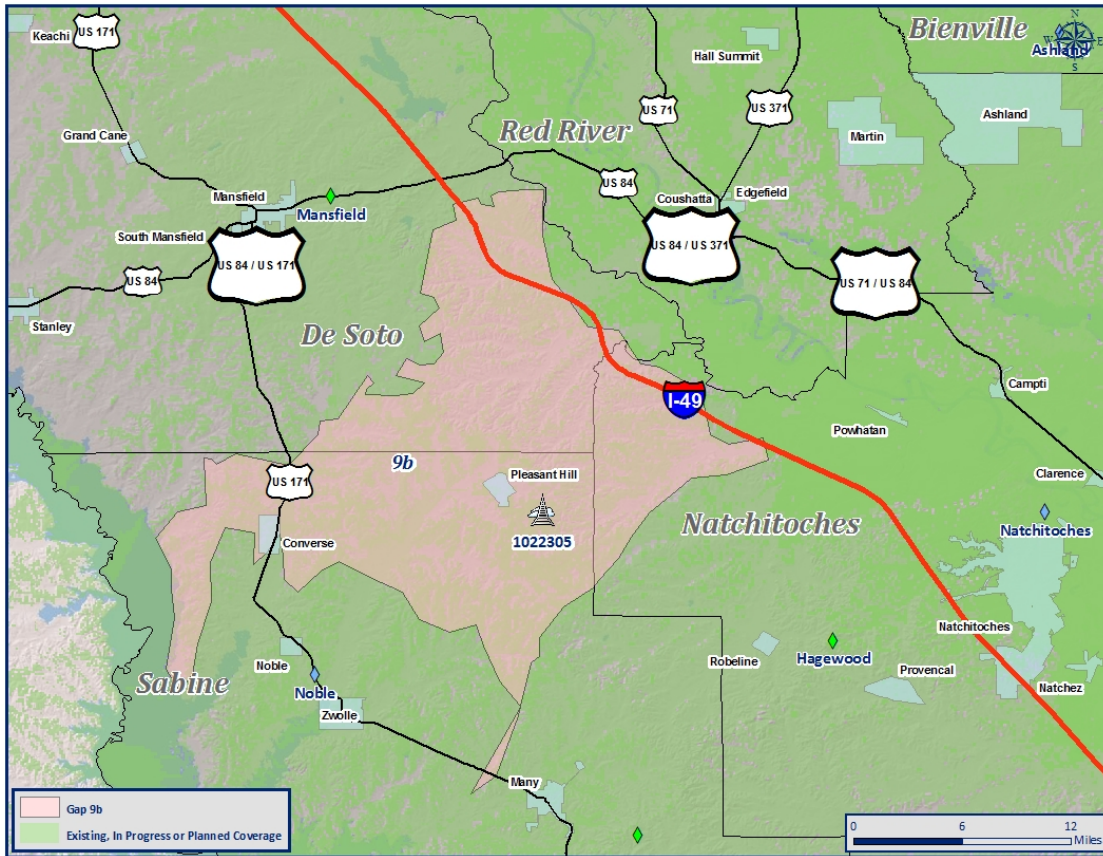
Site near 1022305

Location: 31.800880, -93.482517



	Existing in Gap 9b	Remaining with New Coverage	Percent of Change
Area (Square Miles)	326	181	44.48%
People	4,229	1,661	60.72%
Roads	122	62	49.18%
Urban Areas	3.39	0.07	97.94%

### Previous Gap:



### Resulting Gaps:

