



GOVERNOR'S OFFICE OF HOMELAND SECURITY & EMERGENCY PREPAREDNESS

Prepare

Prevent

Respond

Recover

Mitigate

# Emergency Support Function- 2





Prepare

Prevent

Respond

Recover

Mitigate



# ESF - 2

# WHO?

## Co-lead / Primary Agencies



Governor's Office of Homeland Security and Emergency Preparedness



Louisiana State Police



Louisiana National Guard



Prepare

Prevent

Respond

Recover

Mitigate



**DPS RC**

**WHAT?**

- **LWIN Restoration**
- **LWIN System Status**



Prepare

Prevent

Respond

Recover

Mitigate

# HOW?



## LWIN Restoration

- Vendor Coordination
- Deployable Assets
- Site Assessments





Prepare

Prevent

Respond

Recover

Mitigate

# NOW?



## LWIN Restoration



## Vendor Coordination



## Deployable Assets



## Site Assessments



## October 27, 2021 – Post-Landfall Status @ 7:00 AM

Hurricane Ida

### LWIN System Status:

- Sites in wide area operation:  
143/144 tower sites in normal operation

LWIN Current Site Status: 99.30% are in wide area operations

Site Location	Zone	Status	Online Date	Site Assessed	Assessed By	Comments
Bourg	2	Comm Fail		1-Sep-21	Radio Communications	Water damage to TX/RX hardware/ No utility power. Backup generator requires repair. AT&T T1 issue cleared.
Bayou Gauche	2	Wide Area Operations	17-Sep-21	15-Sep-21	Bearcom	Expandable suit case site is deployed with temporary building.
Houma	2	Wide Area Operations	13-Sep-21	30-Aug-21	Bearcom	T1 issue. Sierra LTE wireless link to provide backhaul connectivity. Unity Fiber telco dispatched. Tower damage repaired. Backup generator is providing power to the site.

Sites are in wide area operations, but are on generator back up power

- Bridge City
- Laplace

### Tactical Equipment:

- Emergency tower trailers
  - Located in Baton Rouge: 3
    - Trailer 98
    - Trailer 99
    - Trailer 100
  - Located in Alexandria: None
    - Deployed: 1
      - Trailer 97 in use at Calcasieu Sheriff's Office before Hurricane Ida



# GOVERNOR'S OFFICE OF HOMELAND SECURITY & EMERGENCY PREPAREDNESS

Prepare

Prevent

**Respond**

Recover

Mitigate

# NOW?

LWIN Operational Dashboard - Hurricane Ida

LWIN Site Status

Wide Area

**141**

Site Trunking

**2**

Fail Soft

**1**

ICS 205 Talk Group Assignments

**\*STATE-1**  
Assigned: STATE EOC  
Function: SEOC  
Hailing  
Comments:  
Monitored by GOHSEP/SEOC

**\*STATE-4**  
Assigned: APCO/NENA  
Function: COORD/Hailing  
Comments:  
Statewide Emergency Calls for Service Coordination / PSAP Coordination

**\*INTEROP-3**

ESF-2 Mission Requests

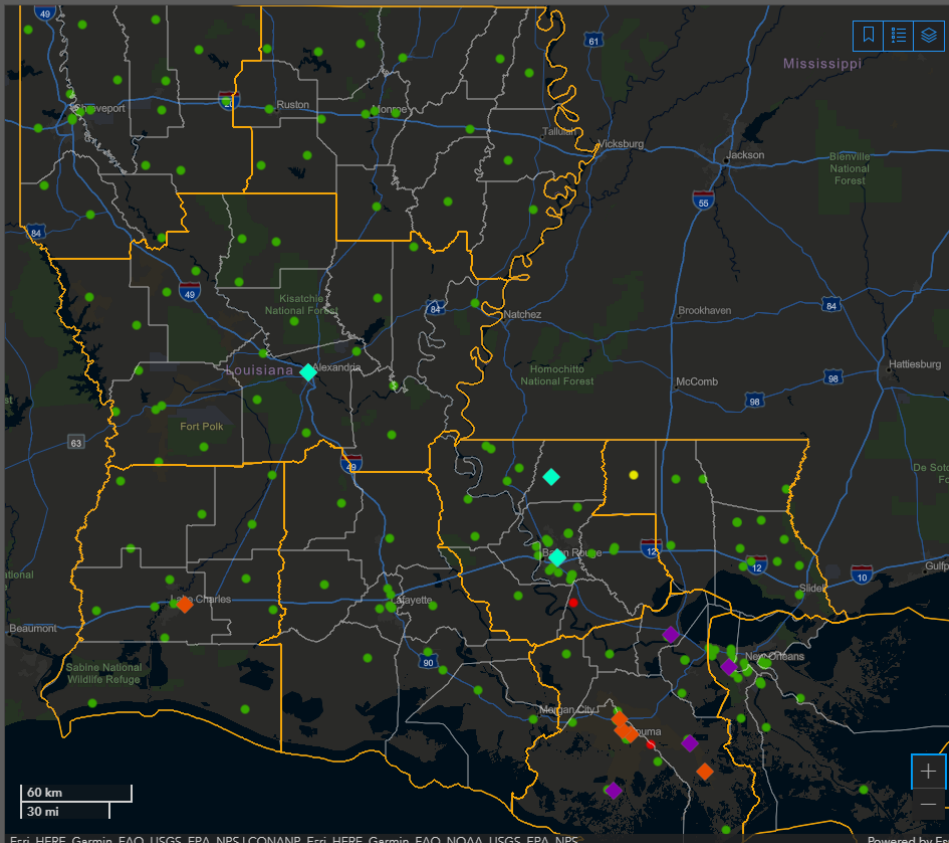
**828-8183257 01**  
: Please reactivate First Net phone service for phone number (225) 229-5194. Phone assigned to LDH OPH R1 for emergency preparedness use.

Status: Complete

Main Point of Contact:  
Jacob Hurwitz

jacob.hurwitz@la.gov

Delivery Point of Contact:  
Jacob Hurwitz



Mobile Sites

**5** **4**  
Available Deployed

Satellite

**4** **3**  
Available Deployed

Generators

**7** **3**  
Available Deployed

XTS 2500s

**138** **15**  
Available Deployed

XTS 5000s

**69** **0**  
Available Deployed

Verizon Pho

**210** **0**  
Available Deployed

First Net

**310** **0**  
Available Deployed

T Mobile

**15** **0**  
Available Deployed



# GOHSEP OI

# WHAT?

- Ensure the public can call for help **-PSAP SUPPORT**
- Ensure the parishes can call for help **-OHSEP SUPPORT**





# HOW?



Ensure the public and the parishes can call for help

- Situational Awareness
- Identify/Manage Resources
- Leverage Commercial and Federal Partnerships



Ensure the public and the parishes can call for help (**PSAP/OHSEP Support**)

# NOW?

## • Situational Awareness



4 FCC Personnel

- 2 Project Roll Call
- 2 PSAP/OHSEP Tracking



FCC Chair Meeting Request

- Mandatory reporting of “Critical Public Safety Circuits” for any area where DIRS activated



Prepare

Prevent

Respond

Recover

Mitigate



Ensure the public and the parishes can call for help (**PSAP/OHSEP Support**)

# NOW?

## • Identify / Manage Resources



LANG Task Force Signal SEOC Integration



Ensure the public and the parishes can call for help (PSAP/OHSEP Support)

# NOW?

## • Leverage Commercial and Federal Partnerships

Commercial Carrier Group (CCG)

- Dedicated meeting space, meetings, and staff (1 NCC/CISA Personnel) to coordinate response efforts of wireless and wireline carriers, ESF3, and ESF12.



AT&T CEO Meeting

- Requested reporting of "Critical Public Safety Circuits" during emergencies



FirstNet President Jason Porter



- Visibility of mobile asset locations
- Better coordination with Network Operations Group





WARNING - NOT FOR PRIVATE USE  
MAXIMUM PENALTY FOR THEFT OR MISUSE OF POSTAL PROPERTY  
\$1,000 FINE AND 3 YEARS IMPRISONMENT (18 USC 1707)  
**UNITED STATES  
POSTAL SERVICE**  
FOR MAIL ONLY





Prepare

Prevent

Respond

Recover

Mitigate



**GOHSEP/DPS**

**WHAT?**

- **Communications Coordination**

<b>1. Incident Name:</b> 21-018 TC Ida - Statewide - August	<b>2. Date/Time Prepared:</b> Date: 20210914 Time: 1400	<b>3. Operational Period:</b> Date From: 202100914    Date To: 20200915 Time From: 1400            Time To: 1800
--	---	--

**4. Basic Radio Channel Use:**

Zone Grp.	Ch #	Function	Channel Name/Trunked Radio System Talkgroup	Assignment	RX Freq N or W	RX Tone/NAC	TX Freq N or W	TX Tone/NAC	Mode (A, D, or M)	Remarks
		STATE CMD	*STATE-1	GOHSEP	LWIN	LWIN	LWIN	LWIN	LWIN	Monitored by GOHSEP OPS
		Tactical	*STATE-2	LSP	LWIN	LWIN	LWIN	LWIN	LWIN	Security Operations at MCC FMS Shelter
		COORD/ Hailing	*STATE-4	APCO /NENA	LWIN	LWIN	LWIN	LWIN	LWIN	Statewide Emergency Calls for Service Coordination
		TACTICAL	*INTEROP-1	SJSO	LWIN	LWIN	LWIN	LWIN	LWIN	St. John Parish LE Operations
		Air-Ground	*INTEROP-3	ESF-9	LWIN	LWIN	LWIN	LWIN	LWIN	ISAR Air-Ground Coordination Monitored by ESF-9, USCG, LANG
		COORD/ Hailing	*INTEROP-4	OSFM	LWIN	LWIN	LWIN	LWIN	LWIN	Fire Marshall-USAR SWLA Area Coordination Monitored by SFM Dispatch, ESF-9
		Command	*INTEROP-5	MCC FMS	LWIN	LWIN	LWIN	LWIN	LWIN	C2 for MCC FMS Shelter
		COORD/ Hailing	*INTEROP-6	LERN	LWIN	LWIN	LWIN	LWIN	LWIN	EMS/LERN TOC Coordination
		COORD/ Hailing	*INTEROP-7	OSFM	LWIN	LWIN	LWIN	LWIN	LWIN	Fire Marshall-USAR SWELA Area Coordination Monitored by SFM Dispatch, ESF-9
		COORD/ Hailing	*INTEROP-8	OSFM	LWIN	LWIN	LWIN	LWIN	LWIN	Fire Marshall-USAR SELA Area Coordination Monitored by SFM Dispatch, ESF-9
		TACTICAL	*INTEROP-9	LPSO	LWIN	LWIN	LWIN	LWIN	LWIN	Livingston Parish SO LE Coordination
		LE COORD/ Hailing	*INTEROP-10	LSA	LWIN	LWIN	LWIN	LWIN	LWIN	Louisiana Sheriff's Association Statewide LE Coordination

**5. Special Instructions:**  
 Mississippi Communications Coordination: Dent Guynes, MS WCC 601-503-0391

**6. Prepared by (Communications Unit Leader):** Name: Travis Johnson

ICS 205      IAP Page \_\_\_\_      Sign

**INCIDENT RADIO COMMUNICATIONS PLAN (ICS 205)**



# Communications Coordination

# NOW?

Web based application to  
request and approve TGs  
that feeds automated 205





# GOVERNOR'S OFFICE OF HOMELAND SECURITY & EMERGENCY PREPAREDNESS

Prepare

Prevent

Respond

Recover

Mitigate

