

# LWIN

## LOUISIANA WIRELESS INFORMATION NETWORK

SYSTEM MANAGEMENT & MAINTENANCE UPDATE

SEPTEMBER 23, 2009

DEPARTMENT OF PUBLIC SAFETY

RADIO COMMUNICATIONS

(225) 925-6036

# **INFRASTRUCTURE UPDATE**

# SYSTEM SUMMARY: 89 INSTALLED SITES

(84 TOWER SITES & 5 MOBILE TRAILER SITES)

- 84 Sites in Full Operation
- 0 Sites in Wide Area w/ Limited Operations
- 5 Operational Trailers

## Site Implementation Progress Summary

- 8 Sites in Released for Installation
- 6 Proposed Sites

# SITES IN FULL OPERATION

Pan Am	Bridge City	Slidell	LaPlace
Buras (Zone 1)	Covington	Sheridan	Baton Rouge
Geismar	St. James	LaRose	Hammond
Gray	LSU	Abbeville	Berwick
Hackberry	Jeanerette	Rockefeller	Jennings
Lake Charles	Lafayette	Vinton	Wilmer
W Baton Rouge	Iberville	Livingston	Parks
Parker Road	Sage Hill	Ramah	Baywood
Avoyelles	Greensburg	Oakdale	Rosepine
DeQuincy	Jackson	Opelousas	Dry Creek
Pointe Coupee	Acadia	Alexandria	Shreveport
Bellevue	Bernice	Calhoun	Columbia
Ferriday	Homer	Jena	Jonesboro
Leesville	Mansfield	Many	Marion
Oak Grove	Plain Dealing	Ringgold	Scott
Tallulah	Wheeling	Theriot	Vermillion
Ville Platte	Merryville	Northern Simulcast Gretna, Gallera, WDSU	Southern Simulcast St. Rosalie, Venice/Reggio
Lafitte/Venice	Kenner	Airport	Buras (Zone 2)
Leeville/Grand Isle	Trailer 96, 97, 98, 99, 100	Delhi	Ruston
Hagewood	Bastrop	Farmerville	Winnfield
Hineston	Chopin	Greenwood	Minden
Hicks			

# CHANNEL SUMMARY

- Total Channels (84 Full Operation Sites and 5 Trailers) – 735
- Total Active Channels – 721
  - 691 Channels on 84 Tower Sites
  - 30 Channels on 5 Trailers
- Repeaters Pending Licenses/Rebanding – 14

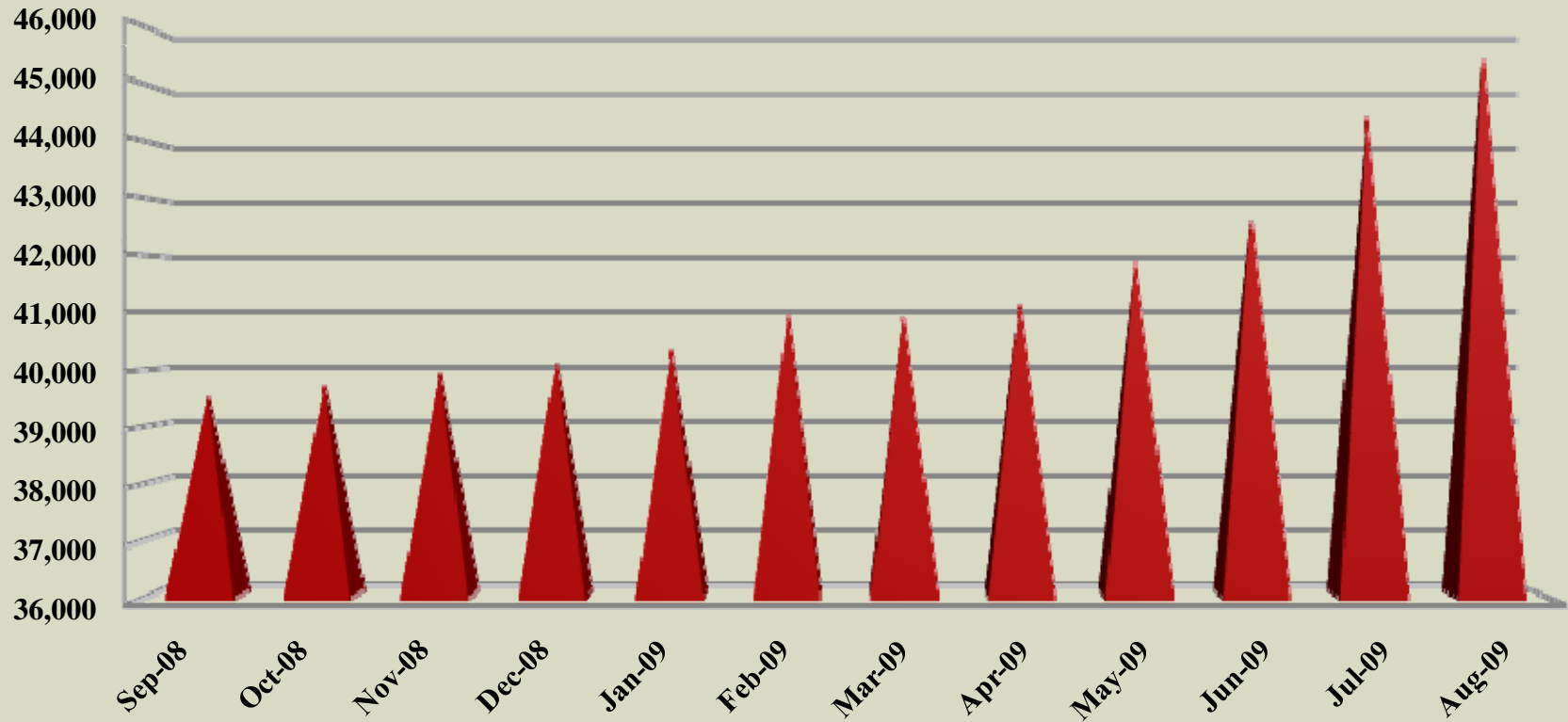
# SITE IMPLEMENTATION PROGRESS

PHASE	SITES	
<p align="center"><b>NEW SITES IN WIDE AREA</b></p>	<ul style="list-style-type: none"> <li>•Delhi</li> <li>•Hagewood</li> <li>•Alexandria 2 / Hinston</li> <li>•Winnfield</li> <li>•Ville Platte</li> <li>•Chopin</li> <li>•Greenwood</li> </ul>	<ul style="list-style-type: none"> <li>•Ruston</li> <li>•Bastrop</li> <li>•Farmerville</li> <li>•Vermillion</li> <li>•Merryville</li> <li>•Minden</li> <li>•Hicks</li> </ul>
<p align="center"><b>INSTALLATION IN PROGRESS</b></p>	<ul style="list-style-type: none"> <li>•Paincourtville (Assumption)</li> <li>•Vivian</li> <li>•Dry Prong</li> <li>•Newellton</li> </ul>	<ul style="list-style-type: none"> <li>•Transylvania (Lake Providence)</li> <li>•Sentell (Shreveport 2)</li> <li>•Blonde</li> <li>•Monroe (KNOE)</li> </ul>
<p align="center"><b>PROPOSED SITES</b></p>	<ul style="list-style-type: none"> <li>•Natchitoches</li> <li>•Converse South</li> <li>•Clearwater</li> </ul>	<ul style="list-style-type: none"> <li>•Ashland</li> <li>•Abita Springs</li> <li>•Lafayette (Troop I)</li> </ul>

# SYSTEM STATISTICS

# SUBSCRIBERS

## USER GROWTH

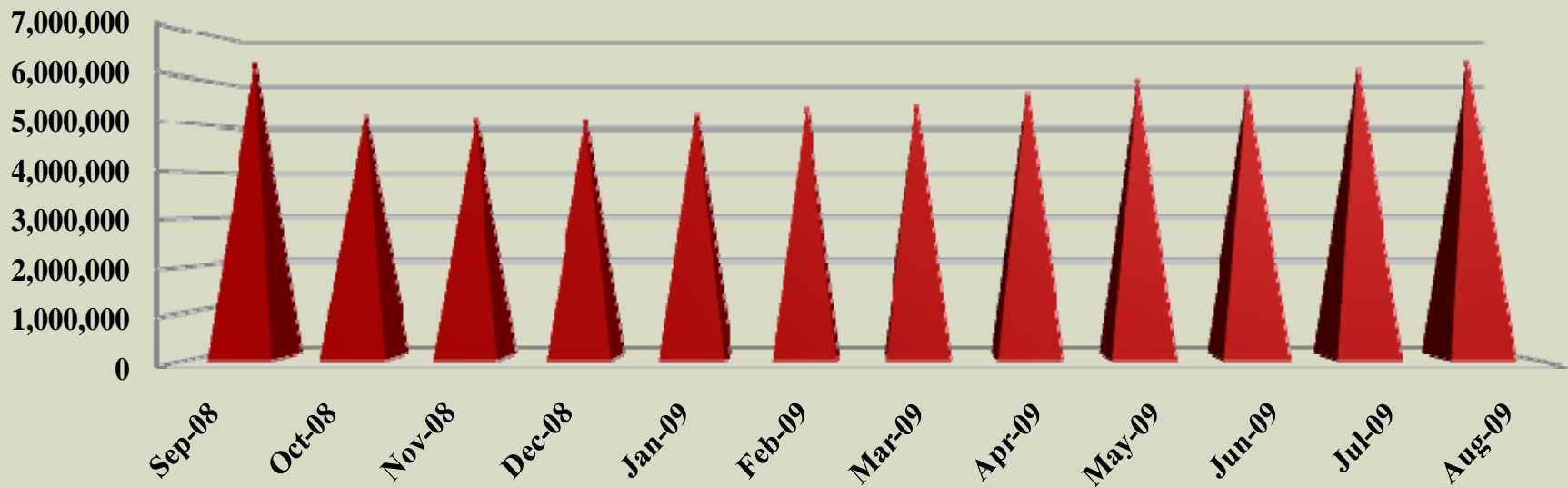


	SEP-08	OCT-08	NOV-08	DEC-08	JAN-09	FEB-09	MAR-09	APR-09	MAY-09	JUN-09	JUL-09	AUG-09
USER GROWTH	39,547	39,706	39,956	40,167	40,354	40,990	40,992	41,158	41,929	42,689	44,502	45,547



# PUSH TO TALK

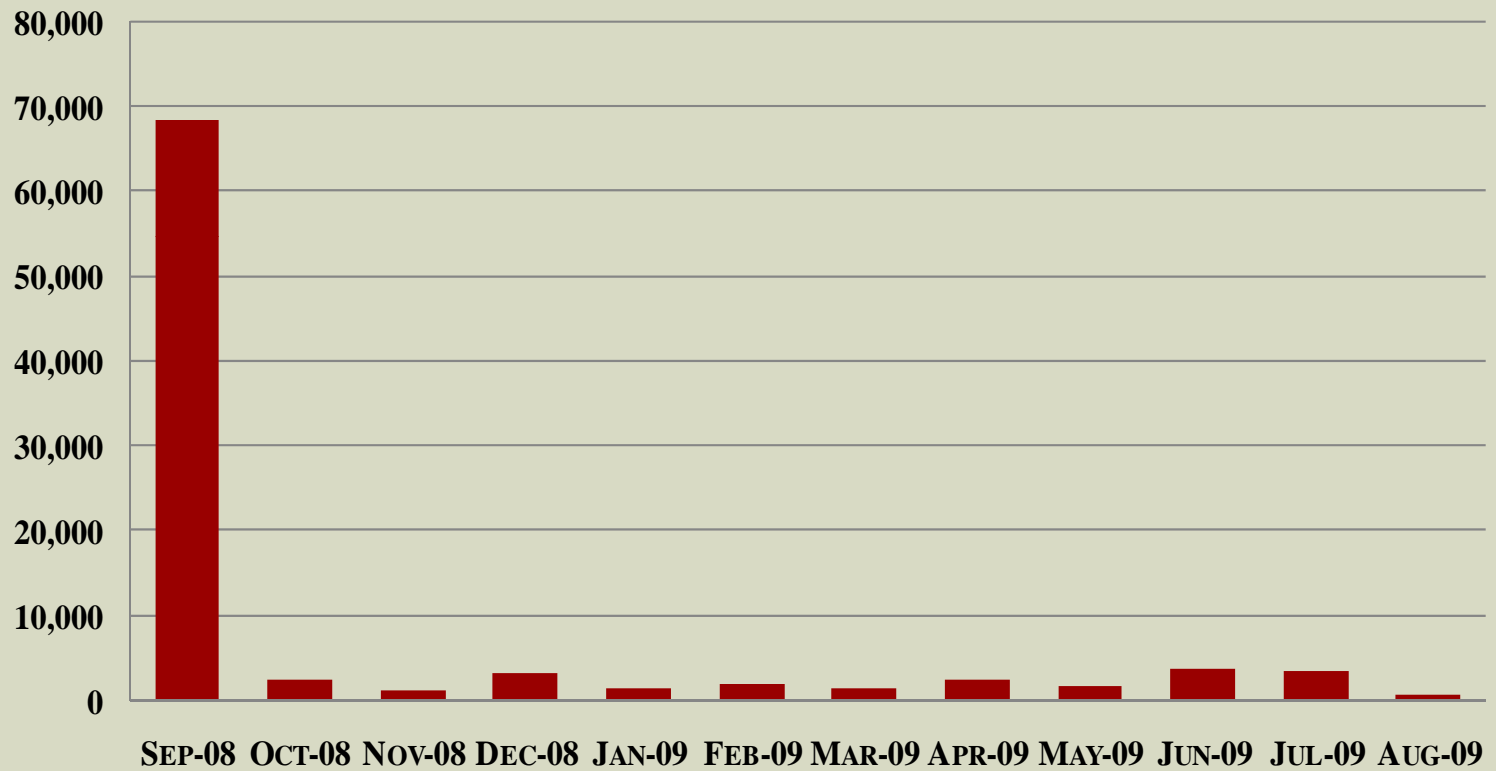
## Monthly PTT



	Sep-08	Oct-08	Nov-08	Dec-08	Jan-09	Feb-09	Mar-09	Apr-09	May-09	Jun-09	Jul-09	Aug-09
Monthly PTT	6,419,512	5,285,662	5,195,631	5,204,892	5,388,332	5,495,414	5,546,892	5,828,059	6,072,607	5,871,132	6,312,139	6,444,167

# BUSIES

**AVERAGE BUSY <:02 SECONDS**



	SEP-08	OCT-08	NOV-08	DEC-08	JAN-09	FEB-09	MAR-09	APR-09	MAY-09	JUN-09	JUL-09	AUG-09
<b>AVERAGE BUSY &lt;:02 SECONDS</b>	68,351	2,291	1,150	3,255	1,428	1,923	1,302	2,291	1,546	3,703	3,300	718

# TOP 5 BUSIEST SITES

➤ **AUGUST 1 TO AUGUST 31**

**AIRPORT**

**IBERVILLE**

**ABBEVILLE**

**HAMMOND**

**WEST BATON ROUGE**

# SUBSCRIBER STATISTICS

# SUBSCRIBER STATISTICS

## ➤ Security Groups/Agencies

- 165/294

## ➤ Talkgroups

- 4,708

## ➤ Users

- 45,547

# AGENCIES ADDED LAST MONTH

City of Plaquemine  
Lafourche Basin Levee District  
United Houma Nation  
Avoyelles Hospital  
Iowa Police Department  
Claiborne OEP

# SYSTEM COVERAGE

# Present Coverage



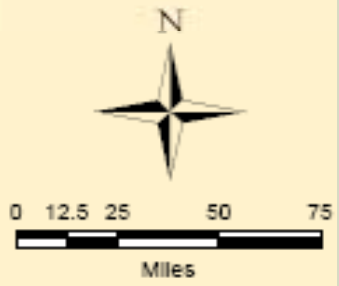
**Legend**

*Site Bullets*

- Site Bullets

*Coverage Area*

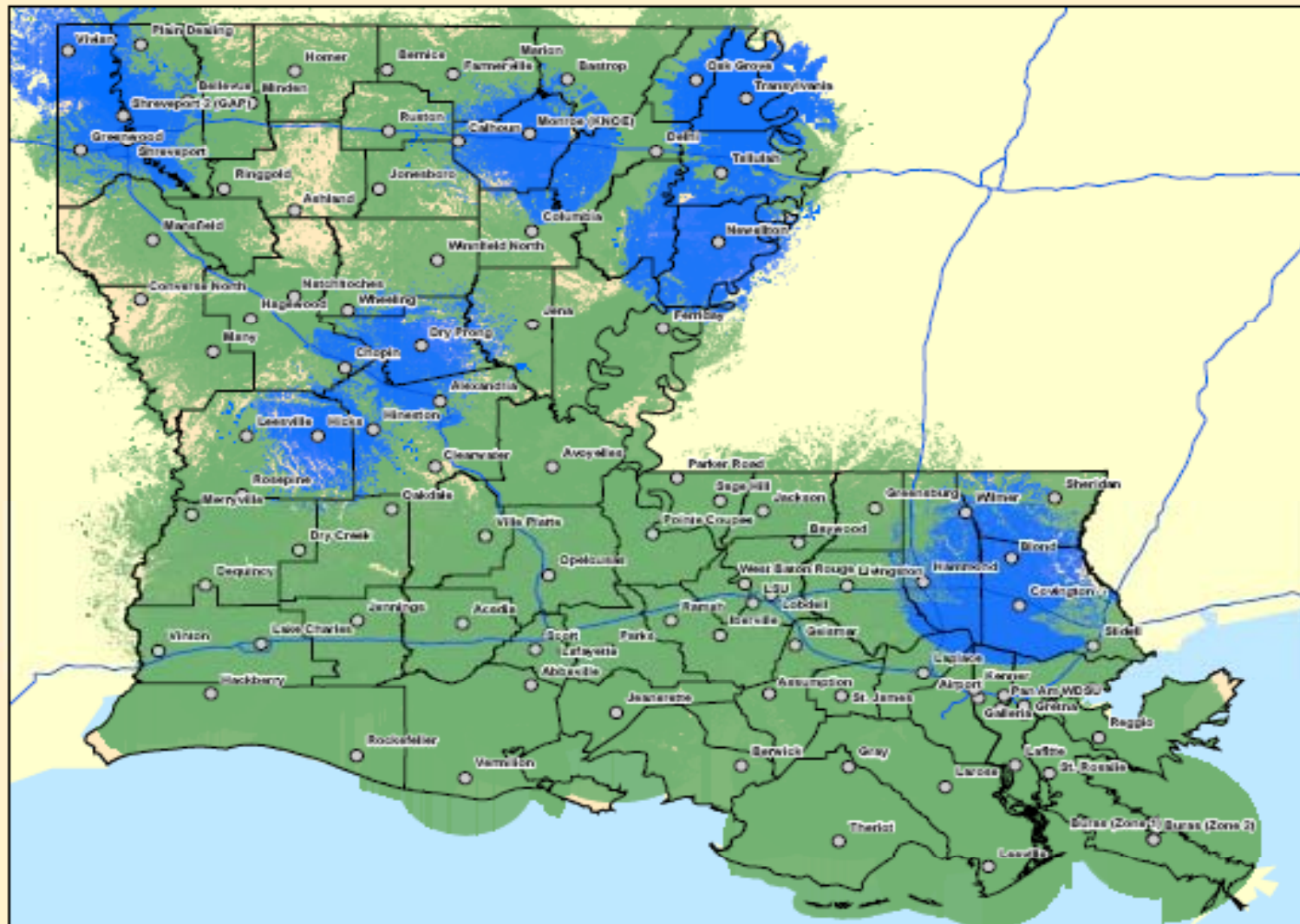
- Current Sites
- Approved Sites
- Proposed Sites



LWIN P25 Coverage (Portable On-Street; 95% Area Reliability)

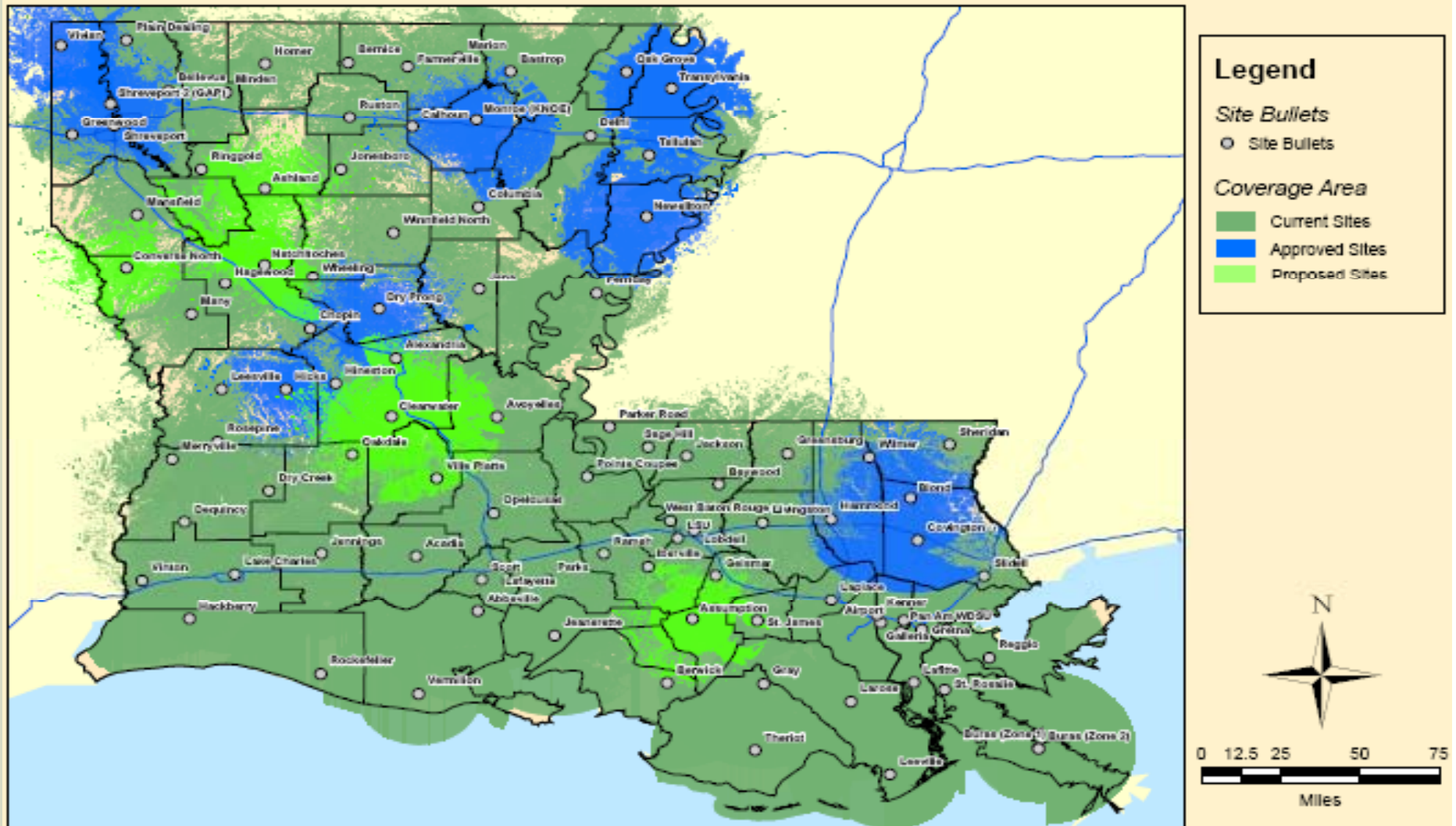


# Installation Phase



LWIN P25 Coverage (Portable On-Street; 95% Area Reliability)

# Development Phase



LWIN P25 Coverage (Portable On-Street; 95% Area Reliability)

**THANK YOU!**